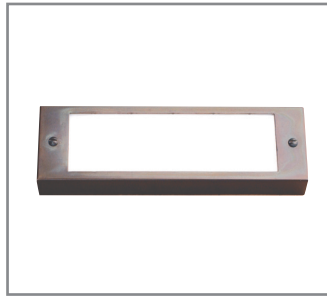




Forever Bright

SPECIFICATION FEATURES

Finish:	Our naturally etched finishes will withstand the test of time. All finishes are individually treated insuring consistency. Our meticulous application results in a fixture that truly becomes "a one of a kind".
Electrical:	Available in 9-15V
Labels:	ETL Standard Wet Label C-ETL

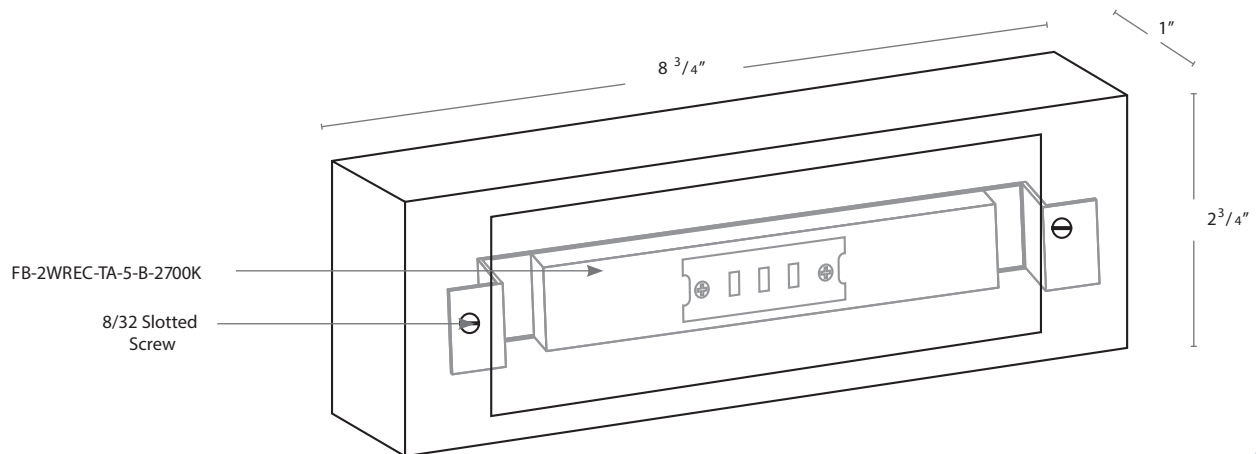


Model: SPJ17-07-QS
Finish: Matte Bronze

Step Light Surface

DESCRIPTION

Model#:	SPJ17-07-QS
Mounting:	Surface
Engine:	FB-2WREC-TA-5-B-2700K
Color Temp:	2700k
Electrical:	9-15V
Lumens:	125
LED:	Nichia



Wet Listed



ORDERING INFORMATION

Model#	Finishes	Wattage	Lumens	Color Temp.	Electrical
SPJ17-07-QS	MBR	2W	125	2700K	9-15V
	MBR = Matte Bronze	2W	125	2700K 4000K 6500K	9-15V