

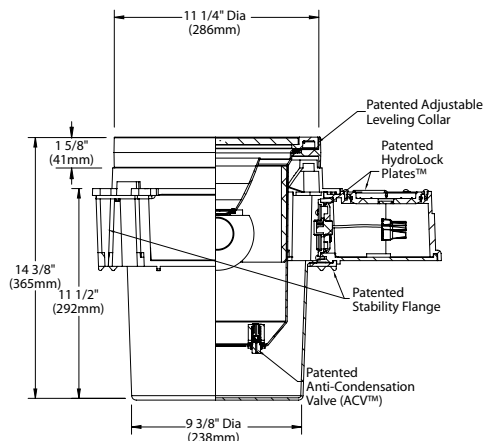
TENAYA2

BKSSL
SOLID STATE LIGHTING

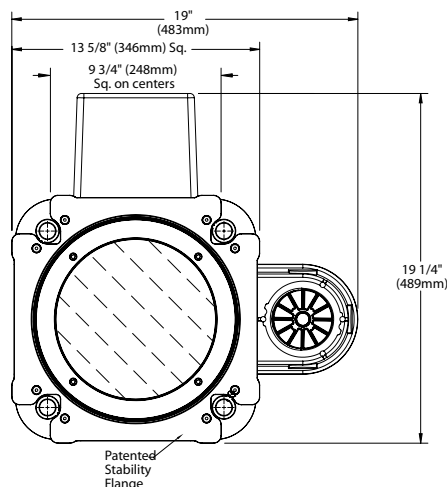


IN-GRADE

SIDE VIEW



TOP VIEW



DRIVER ELECTRICAL DATA

TYPE	AC INPUT RANGE	Frequency Hz	DIMMING	POWER FACTOR AT FULL LOAD	THD	OPER. AMBIENT TEMPERATURE	DIMMER TYPE	DIMMER RANGE
D31	120/208/240/277	50/60	YES	>0.9	≤20%	-20° C ~ 50° C	0-10V	1-100%
D42	120/208/240/277	50/60	YES	>0.9	≤20%	-20° C ~ 50° C	0-10V	1-100%
D52	120/208/240/277	50/60	YES	>0.9	≤20%	-30° C ~ 60° C	0-10V	10-100%
D31ARC	120/208/240/277	50/60	YES	>0.9	≤20%	-20° C ~ 50° C	0-10V	0.1-100%
D42ARC	120/208/240/277	50/60	YES	>0.9	≤20%	-20° C ~ 50° C	0-10V	0.1-100%

All dimensions indicated on this submittal are nominal. Contact Technical Sales if you require more stringent specifications.

SPECIFICATIONS

GreenSource Initiative™

Metal and packaging components are made from recycled materials. Manufactured using renewable solar energy, produced on site. Returnable to manufacturer at end of life to ensure cradle-to-cradle handling. Packaging contains no chlorofluorocarbons (CFC's). Use of this product may qualify for GreenSource efficacy and recycling rebate(s). Consult www.bklighting.com/greensource for program requirements.

Fixture Housing

Corrosion-free housing made from high strength, injection molded composite compound. Glass reinforced, flame retardant and UV stabilized. Integrated walk-over cover provides closure of housing during rough-in and serves as concrete pour cover. Integral bubble level simplifies level housing installation.

Junction Box

Top mounted with dual access for wire connection and inspection. (2) bottom-entry 3/4" NPT female conduit entries with knockout plugs and (3) side flats for 1/2" or 3/4" conduit adapters.

Patented Stability Flange

Molded collar projects into installation sub-strate to reinforce housing stability. Integral REBAR saddles simplify installation onto concrete form. (4) Orthogonal bosses permit use of 1/2" PCV conduit or EMT to simplify vertical position and leveling of housing. Pre-set self-tapping screws anchor housing at proper elevation.

Faceplate

5/8" thick machined A356 aluminum with (4) black oxidized, captive, stainless steel mounting screws. Spring loaded hardware facilitates faceplate removal. 30° horizontal rotation provides for linear screw alignment. Also available in machined brass or machined stainless steel.

Patented Adjustable Leveling Collar

Machined collar provides biaxial 4° tilt and 1" elevation adjustment (total travel) for correction of uneven housing installation. Threaded, stainless steel adjustment posts. Collar material and finish match faceplate.

Lens

Shock resistant, tempered 3/8" borosilicate flat glass. Suitable for walk-over and drive-over applications to 35,000 lbs. GVW. Optional Extra Load Lens (XL) suitable for use in heavier load installations to 55,000 lbs. GVW.

Installation

Integral, copper-free aluminum concrete pour collar (CPC), permits for direct burial installation in soil or concrete. Consult Drainage Installation Guide for In-Grade Fixtures (DIG-IT) for compliance with proper soil preparation and drainage requirements prior to installation.

Aiming

Dual axis OptiLock® rotates 360° and provides vertical adjustment up to 35°. Stainless steel hex head screws provide positive lock action and ensures optical orientation.

BKSSL®

Integrated solid state system with 'X' technology is scalable for field upgrade. Modular design with electrical quick disconnects permit field maintenance. Minimum 50,000 hour rated life at 70% of initial lumens (L70). BKSSL® technology provides long life, significant energy reduction and exceptional thermal management.

Color Management

Chip on board technology delivers natural white light. Exact color point conformity exceeds ANSI C78.377 standard. Module exceeds 80 CRI (RA>80, R9.16). Color point uniformity 2 SDCM color control for 2700K-4000K CCT.

Optics

Interchangeable OPTIKIT™ modules permit field changes to optical distribution.

Driver Enclosure

IP-68 rated enclosure. 16AWG, direct burial electrical cables with watertight, molded electrical quick disconnects. Corrosion free polyamide strain relief connectors.

Driver (31-52W)

[1] 1.05A (D31, D42) or 1.4A (D52), Class A, constant current driver. 120-277VAC (nominal) primary input voltage. 50/60Hz. >0.90 Power Factor, <15.0A in-rush current, ≤20%THD (nominal at 120VAC full load). Output over-voltage, over-current, and short circuit protection with auto recovery.

EMC: FCC47CFR Part 15 Class B compliant. Dimming driver for use with standard 0-10V dimmers and switch controls. 0.1-100% range (Refer to driver electrical data).

Wiring / Connectors

Teflon® coated wire, 18AWG, 600V, 250°C rated and certified to UL1659 standard. (3) silicone filled connectors supplied for line connection. Maximum (2) #10 & (1) #18. Minimum (1) #12 & (1) #18.

Patented Water Management Features

Self Evacuating Airtight Lamp Module (S.E.A.L.™). IP-68 rated, vacuum sealed enclosure. Molded, solid silicone faceplate gasket. Patented Anti-Condensation Valve (ACV™) eliminates condensation from optical chamber and transformer enclosure. Watertight male receptacle. Toolless entry for lamp service.

Patented HydroLock® technology provides fail safe water barrier between junction box and interior components. Anti-Siphon Valve (ASV™) prevents "wicking" through conductor insulation.

Finish

StarGuard®, our exclusive RoHs compliant, 15 stage chromate-free process cleans and conversion coats aluminum components prior to application of Class 'A' TGIC polyester powder coating. Brass components are available in powder coat or handcrafted metal finish. Stainless steel components are available in handcrafted metal finish. (Brushed finish for interior use only).

Warranty

5 year limited warranty.

Listings

ITL tested to IESNA LM-79. Lighting Facts Registration per USDOE (www.lightingfacts.com). ETL Listed to ANSI/UL Standard 1598, UL Subject 8750 and Certified to CAN/CSA Standard C22.2 No. 50. RoHs compliant. Suitable for use in wet locations. Additionally suitable for installation within 4' of the ground. IP68 Suitable for ground-mounted recessed. Made in USA.



*Teflon is a registered trademark of DuPont Corporation.

B-K LIGHTING

40429 Brickyard Drive • Madera, CA 93636 • USA
559.438.5800 • FAX 559.438.5900
www.bklighting.com • info@bklighting.com

RELEASED
08-25-15

DRAWING NUMBER
SUB-2145-00

Tenaya2® and its features are covered in whole or in part by U.S. Patent No. 7,175,297; U.S. Patent No. 7,033,038; U.S. Patent No. 6,254,258 B1; U.S. Patent No. 7,553,042; and U.S. Patent No. 7,560,148.