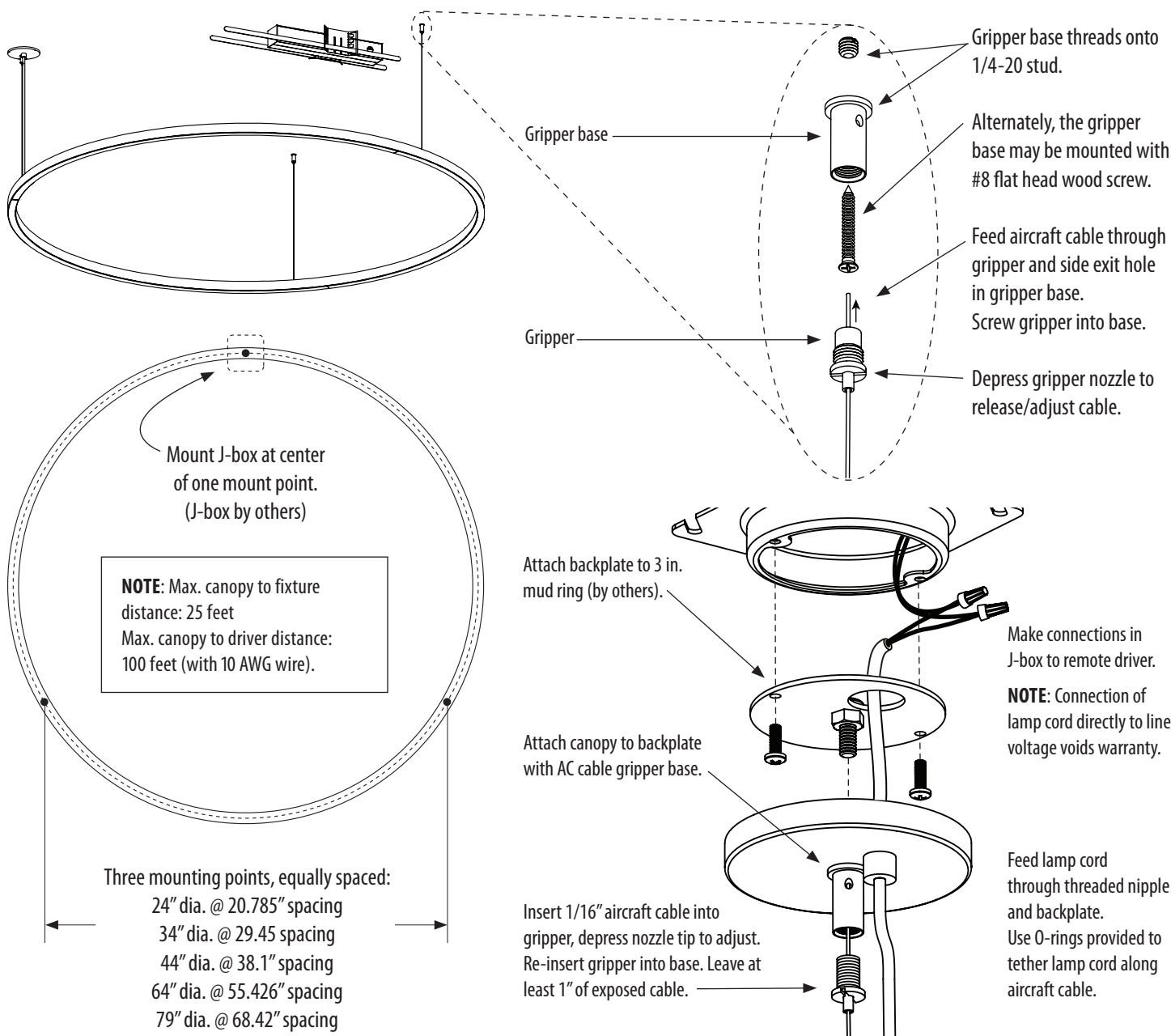


WARNING: Disconnect main power at the source prior to installation! Only qualified electricians should install Alcon Lighting products.



Direct Only wiring:

Red to 24VDC positive
Blue to 24VDC negative

Direct/Indirect wiring:

Red to 24VDC positive
Blue to 24VDC negative

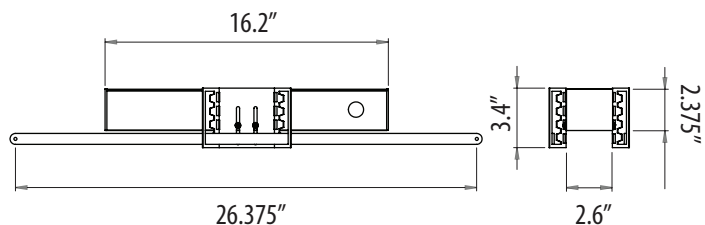
Driver 1

Red/White to 24VDC positive
Blue/White to 24VDC negative

Driver 2

Dimming:

Purple and Gray wires from driver to 0-10V dimmer, cap if not used.



Remote driver includes bar hangers to mount above suspended ceilings. Drivers must remain accessible after installation. Driver housing must not be mounted any closer than 4 inches apart. Bar hangers and brackets may be removed for direct mount to structure with screws. Connect J-box to driver housing with conduit (by others).