

Project Name: _____ Type: _____ Quantity: _____

INTENDED USE

The Alcon 9207 Recessed Step Light is designed for versatility in both residential and commercial environments. Ideal applications include stair and step illumination for safety, deck and patio lighting for ambiance, and walkways or pathways to guide movement and highlight design. In hotels, resorts, restaurants, and public spaces, it balances function with style, while its low-profile form adds subtle accent lighting to architectural features.

FEATURES

Construction: Premium Aluminum Housing

Dimensions: 4.71" (L) x 0.32" (W) x 2.87" (H)

Voltage: 12V AC/DC

Wattage: 3.5W

Lumens: 315 lm

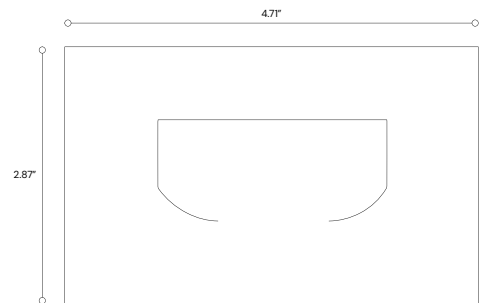
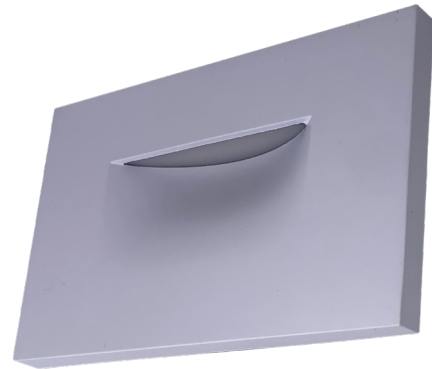
Finish: White, Black, Brown, Silver

Color Temperature: 30/40/50K selectable switch

Warranty: 2 years carefree for parts & components
(Labor not included)

Operating Temperature: -4°F to 104°F

Listings: ETL Listed, suitable for wet locations, IP65
Outdoor rated



ORDERING INFORMATION Example:

Model	Finish
9207	WH White BK Black BR Brown SL Silver

COLOR TEMPERATURE GUIDE

