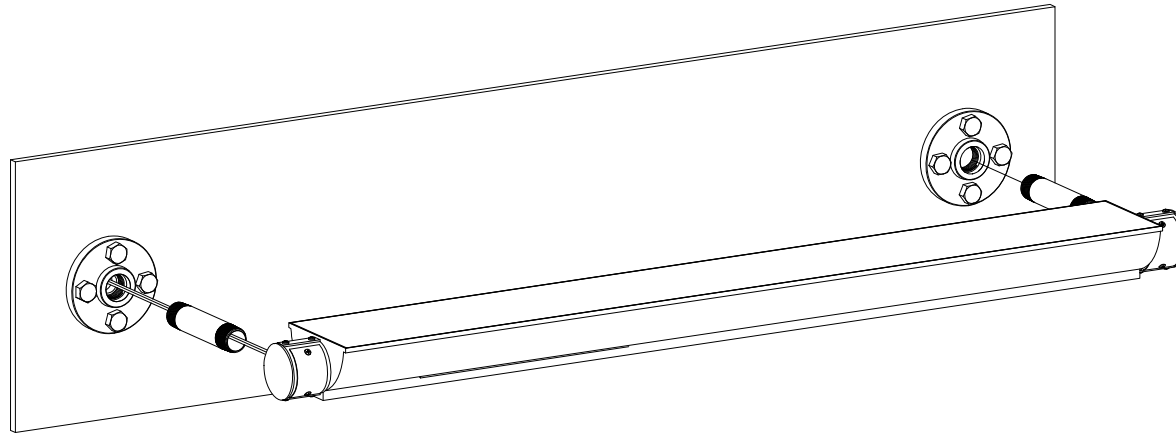


WARNING: Important: This product must be installed in accordance with applicable electrical codes by a qualified professional familiar with its construction, operation, and associated safety hazards. Follow all safety guidelines during installation. Retain these instructions for future reference.

31029 - INSTALLATION INSTRUCTIONS

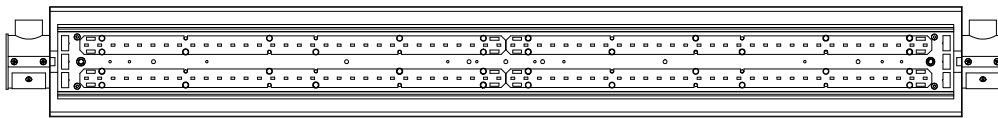
IMPORTANT SAFEGUARDS

1. Before installation, disconnect power at the main switch or circuit breaker.
2. Ensure all wiring complies with the National Electrical Code (NEC) and local codes. Installation and maintenance must be performed by qualified personnel only.
3. Do not install near gas or electric heaters. Mount the fixture in secure locations and at heights that prevent tampering or unauthorized access. Use only manufacturer-approved accessories. Any modification or use of non-original parts voids the warranty and may compromise safety.

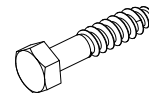


Note: The mounting surface and hardware must support the full weight of the fixture.

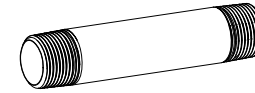
PARTS



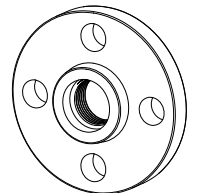
31029 Fixture
(Provided)



Lag Bolt
(By Others)



1" x 6" Threaded Pipe Nipple
(By Others)



Threaded Pipe Flange
(By Others)

31029 - INSTALLATION INSTRUCTIONS

INSTALLATION STEPS

Step 1

Identify the power side and drill a hole in the mounting surface.

Step 2

Mark mounting points. Install Threaded Pipe Flanges (by others), or prep power leads from an existing junction box.

Step 3

Secure flanges with Lag Bolts (by others).

Step 4

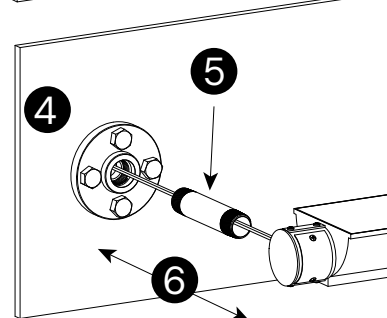
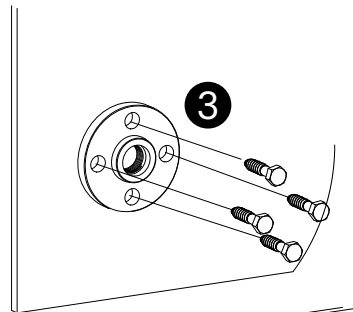
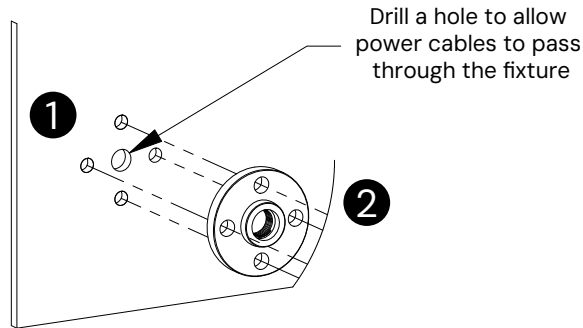
Feed the power cable through the center opening. Connect fixture wiring to the power supply per code.

Step 5

Align the fixture. Insert a 1" x 6" Threaded Nipple and Pipe Flange (by others) on each end.

Step 6

Press all parts together, then rotate the threaded nipples clockwise to tighten and lock in place.



Fixture Adjustment:

To adjust aim or orientation, loosen (do not remove) the screws located at each end of the fixture.

