

Project Name: \_\_\_\_\_ Type: \_\_\_\_\_ Quantity: \_\_\_\_\_

### INTENDED USE

The Alcon 31026 outdoor solar powered rechargeable sign light is available in 1 foot, 2 foot and 4 foot lengths. Our outdoor sign and billboard light is ideal for outdoor signage, as well as exterior architectural applications such as general site lighting, alleys, loading docks, doorway, pathway, and parking areas.

### FEATURES

**Construction:** Aluminum Alloy with Polycarbonate Lens

**Color Temperature:** 6000K (For 2 and 4 foot option)

6000K/3000K Color Temp Switch (For 1 foot option)

**CRI:** 70+

**LED Life:** 70,000 Hours

**Operating Temperature:** 14°F to 122°F

**Operation on Full Charge:** 6–8 hrs. Depending on the Sunlight Quality, See The Map On Page 3

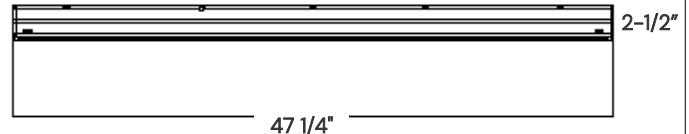
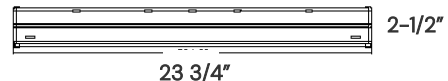
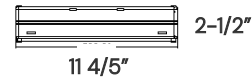
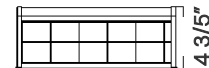
**Battery Type:** Lithium-ion 5200mAh

**Battery Life:** More than 2000 Cycles  
(2000/365 days = 5.47 years)

With Overcharge And Over-Discharge Protection

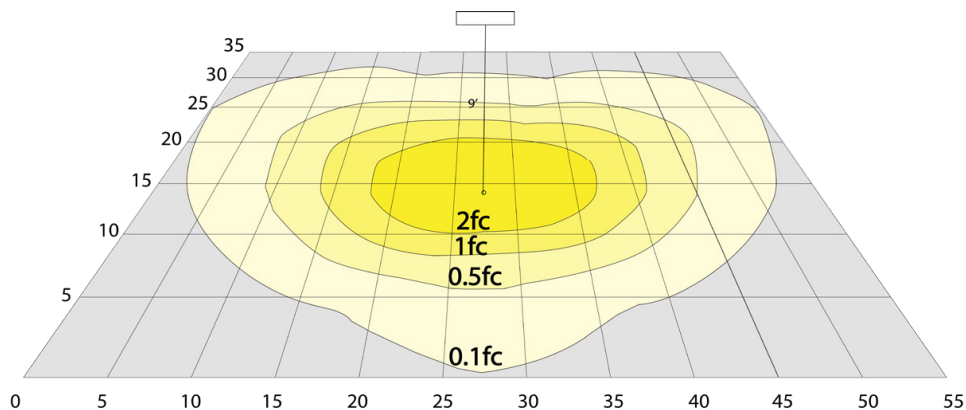
**Warranty:** 5 Years Carefree for Parts & Components  
(Labor Not Included)

**Listings:** IP65

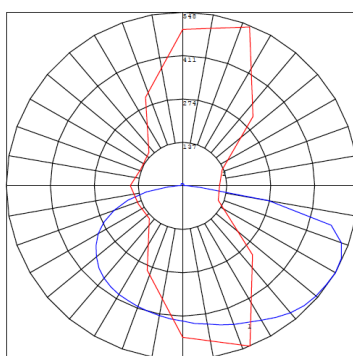
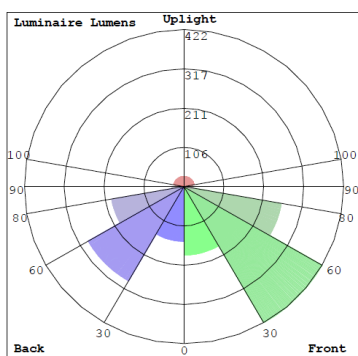


### ORDERING INFORMATION Example: (31026-1)

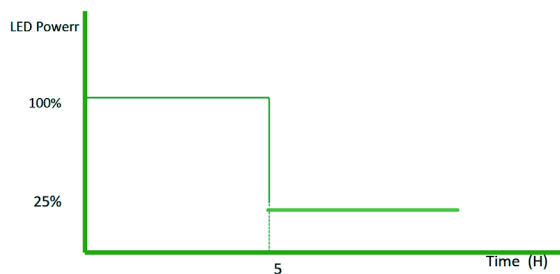
Model	Length   Wattage   Lumens
31026	1 1 Foot   5W   500 LM
	2 2 Foot   10W   1000 LM
	4 4 Foot   20W   2000 LM



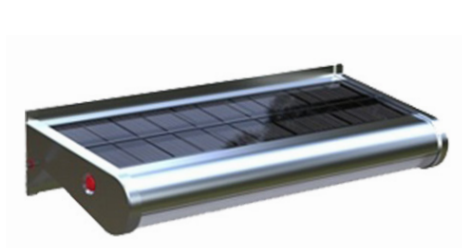
Area 35'x 55' Mounting Height: 9'



BUG Rating: B1-U2-G0



**Working mode:**  
Dusk to Dawn  
Full Brightness for First 5Hrs.  
Dim to 25% for 7Hrs.



Side View



Front View

The best facing direction for the solar panel is toward the south. facing west & east & north will provide less sunlight, resulting in a long time to charge the battery. The solar charge will be less optimal if the installation is facing north.

Increasing the tilt 15° in the winter or decreasing 15° in the summer gives the maximum sunlight for recharging the battery.

