



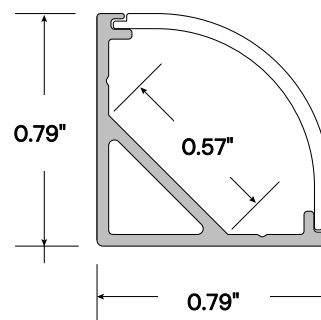
Read all instructions before installation. Improper installation may cause electric shock or fire. Do not look directly into the light. This fixture is intended for indoor use only. It must be installed by a qualified electrician in accordance with these instructions and current electrical codes.

### PRE-INSTALLATION

#### Surface Mount

Disconnect power source prior to installation

### DIMENSIONS



**STEP 1** Align the profile on your chosen mounting surface. Using a pencil, mark and measure where your channel and mounting clips will be placed. (Figure 1)

**STEP 2** If needed, snap the lens into the channel and cut to the desired length using a blade suitable for aluminum (Figure 2). Then, separate the lens from the channel and clean any debris from the extrusion.

**STEP 3** Peel the adhesive backing of the LED strip and install onto the channel. Then, carefully snap the lens back in place on the aluminum channel. (Figure 3)  
\*Make sure that the LED strip is laid evenly flat on the channel. This will avoid having any dark spots once lit up.

**STEP 4** Install the endcaps at the ends of the extrusion, making sure to feed the LED tape wires through the endcap with a hole. (Figure 4)

**STEP 5** Using appropriate hardware, secure the mounting clips along your marked mounting surface. (Figure 5)  
\*Factory recommends using one mounting clip every 12 inches.

**STEP 6** Gently push the extrusion into the installed mounting clips. (Figure 6)

**STEP 7** Wire as needed.

