

Project Name: _____ Type: _____ Quantity: _____

INTENDED USE

This energy-efficient LED product may be used for a variety of residential and commercial spaces. Our recessed, downlighting features a 30° beam angle. The architectural-grade, damp location-approved light includes a range of color temperatures, making the three-inch product perfect for a variety of projects.

PRODUCT FAMILY

- 14143-R** | 3-Inch Trimless Round
- 14143-S** | 3-Inch Trimless Square
- 14143-R-TF** | 3-Inch Trim Flange Round

FEATURES

Construction: Type IC-rated, no housing required. Die-cast aluminum with white powder-coat finish.

Junction box included

Beam Angle: 24°

CRI: 90+

Driver: TRIAC dims to 10%

Operating Temperature: 104°F maximum

Voltage: 120VAC

Lumens: 700 lm – Up to 70 lm/W

Wattage: 10W

Color Temperature: 27–50K selectable switch

Emergency Battery: Internal 90 min. w/ test switch

Life: 50,000 hours

Listing: ETL, JA8/Title 24, Energy Star, Rohs, Damp location suitable

Warranty: 5 Years carefree for parts & components (Labor not included)



Trimless Round



Trimless Square



Trim Flange Round



ORDERING INFORMATION Example:

Model	Shape	Trim	Finish	Options
14143	R Round	TF Trim Flange	WH White	EM8 8 Watt Emergency Battery
	S ⁴ Square	TL Trimless	BK Black	FL Frosted Lens
			CH ² Chrome	3EC ¹ 3 FT Extension Cord
			MG ² Matte Gold	
			MSL ² Matte Silver	
			BW ³ Black/White	

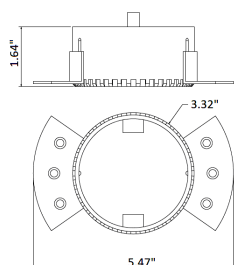
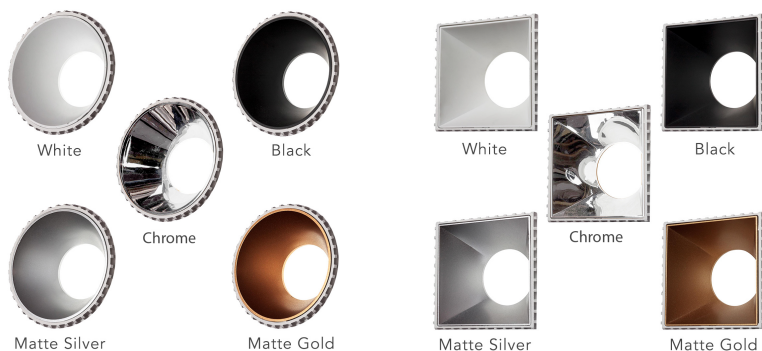
¹ This accessory offers easier installation

² Trim Flange models come with a white trim, the finish applies for the reflector

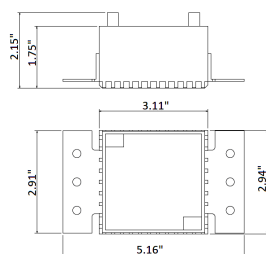
³ Black reflector, white trim (Only for Trim Flange model)

⁴ Available only in Trimless

LINE DRAWINGS



Trimless Round



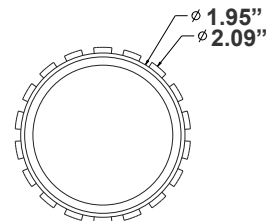
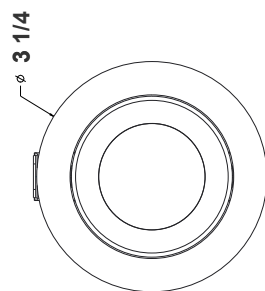
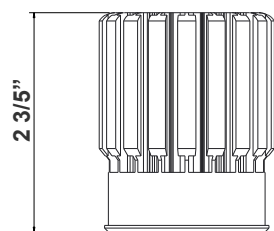
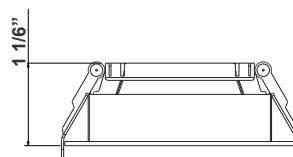
Trimless Square



LED Engine



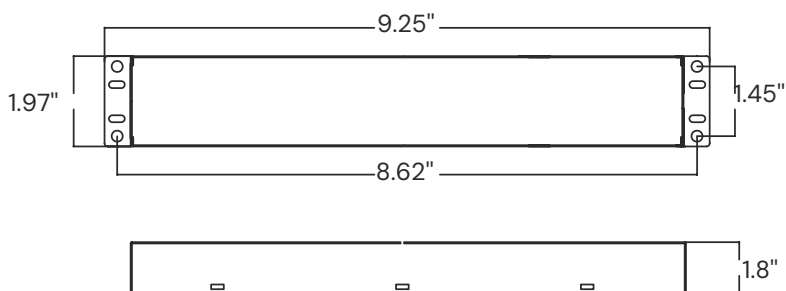
Junction Box
included with
fixtures



INTERNAL EMERGENCY BATTERY WITH TEST SWITCH

Dimensions

Case-9.25"X1.97"X1.8"(mounting center-8.62")



Applications

This emergency driver is designed for LED fixtures with internal drivers, providing up to 8W of emergency power for 90 minutes. It complies with UL 924 standards and meets all Federal, State, and Local code requirements. The emergency pack is UL-listed as a component of a luminaire, with final suitability determined by UL or Authorities Having Jurisdiction (AHJ).

Performance

AC Operation:

When AC power is present, the internal driver powers the LED fixture as normal. The emergency driver remains in standby mode, with the charging indicator lit to show battery charging.

Emergency Mode:

In a power outage, the system automatically switches to emergency mode, turning off the charging indicator and illuminating the LED load for at least 90 minutes. Once AC power is restored, the system recharges and returns to normal operation.

Malfunction Mode:

A green LED indicates normal operation. If the battery is disconnected or a circuit fault occurs, the green LED turns off.

Feature	Specification
Selectable Emergency Power	3W, 5W, 8W
Universal Input Voltage	100-277VAC
RoHS Compliant	Yes
AC Input Current	90mA max
AC Input Power Rating	6W max
Output Current and Voltage	400mA 95Vdc max
Output Power	8W max
Illumination Time	≥90 Minutes
Test Switch / Charging Indicator Light	Low Voltage, illuminated Test Switch
Battery Charging Current	250mA
Recharge Time	≥24 Hours
Temperature Rating (Ambient)	32°F to 122°F (0°C to 50°C)
Weight	2.64 lbs (1.2kg)
Battery Protections	Over voltage protection, Low voltage protection, Over temperature protection
Battery Type	High-Temperature, Maintenance-Free Ni-MH
Battery Life Expectancy	5 Years

COLOR TEMPERATURE GUIDE

