

Project Name: _____ Type: _____ Quantity: _____

INTENDED USE

An elegant LED tracklight which provides high-CRI illumination for commercial, hospitality and residential interiors includes Color Temperature Select for versatility. Use this light for lighting today's office, classroom, conference room, museum, retail shop, hotel or restaurant.

PRODUCT FAMILY ACCESSORIES

- 13000-TC** Track Channel
- 13000-LC** Linear Connector
- 13000-OA** Outlet Adapter
- 13000-SC** Slope Ceiling Track Adapter
- 13000-TB** T-Bar End Feed
- 13000-FC** Floating Canopy
- 13000-EC** Connector End Cap
- 13000-LC** Live End with Canopy
- 13000-LE** Live End
- 13000-L** L-Connector
- 13000-T** T-Connector
- 13000-X** X-Connector
- 13000-MC** Mini Connector
- 13000-CP** Cord and Plug Connector
- 13000-PA** Pendant Adapter
- 13000-CC** Conduit Connector
- 13000-CK** Conduit Continuation Kit

FEATURES

Construction: Sleek, durable steel body with concealed heat sink, wiring, and internal adjustment mechanism allowing for maximum adjustability
Connector: 3-wire H-type 1 circuit & 2 circuit track (standard)
Adjustable: 350° rotation / 0°-180° gimbal
Electrical: Integral electronic constant current
Voltage: 120V
Dimming: 120V 2-wire/incandescent/ELV dimming
CRI: 90+
Color Temperature: 2700K/3000K/3500K/4000K/5000K select switch is standard for single head
Life: 35,000 hours L70
Listings: ETL/cETL Listed for dry locations only
Warranty: 3 years carefree for parts & components (labor not included)

ORDERING INFORMATION Example: (14130-1-10W-FL45-CTS-WH)



R (Optional)

Round Monopoint Canopy



S (Optional)

Square Monopoint Canopy



Model	Wattage Lumens ¹	Beam Spread	Color Temp	Finish	Options	
14130-1 Single Head	10W 10 Watts 800 lms	SP15 15° Spot	CTS ² Color Temp Select (27K/30K/35K/40K/50K)	WH White	BH Black Hexcell Louver	SN Snoot
14130-2 Double Head		NF25 25° Narrow Flood		BK Black	H ³ Halo-Type Connector	RL Red Lens
		FL45 45° Flood Standard		SL Silver	J ³ Juno-Type Connector	YL Yellow Lens
					L ³ Lightleir-Type Connector	AL Amber Lens
					R Round Monopoint Canopy	BL Blue Lens
					S Square Monopoint Canopy	GL Green Lens

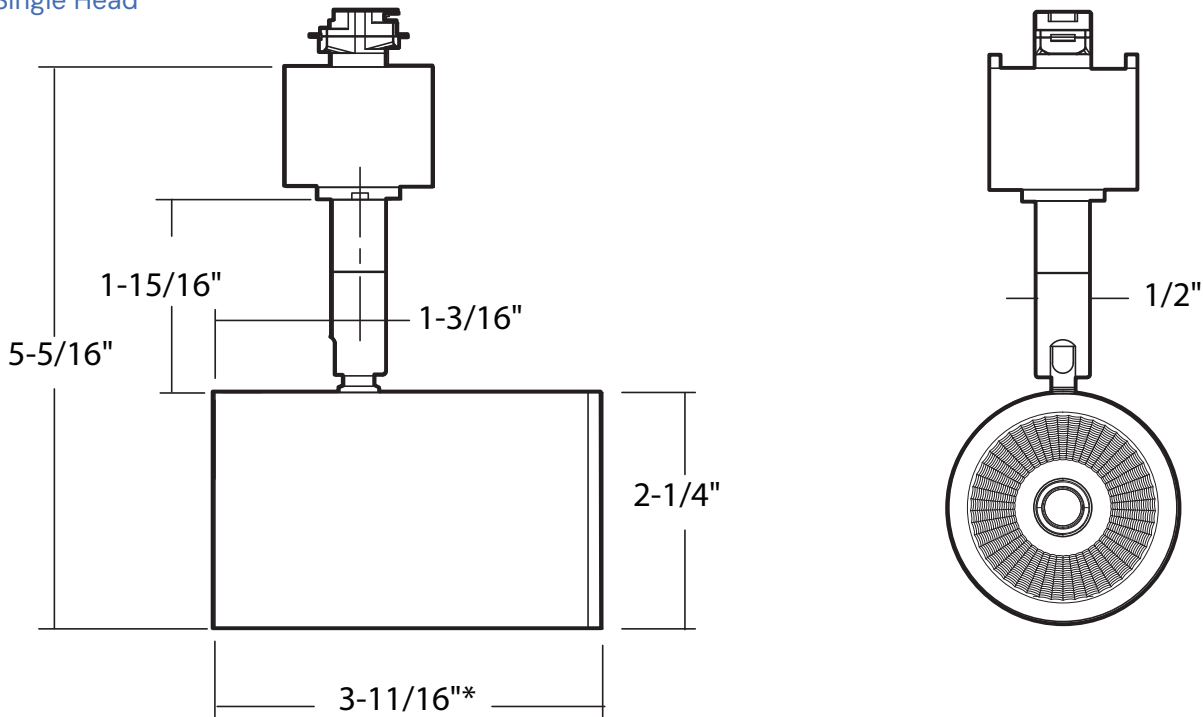
¹ Double Head models use twice the wattage and lumens

² 5000K is unavailable for Double Head

³ Contact the factory for availability and extended lead times

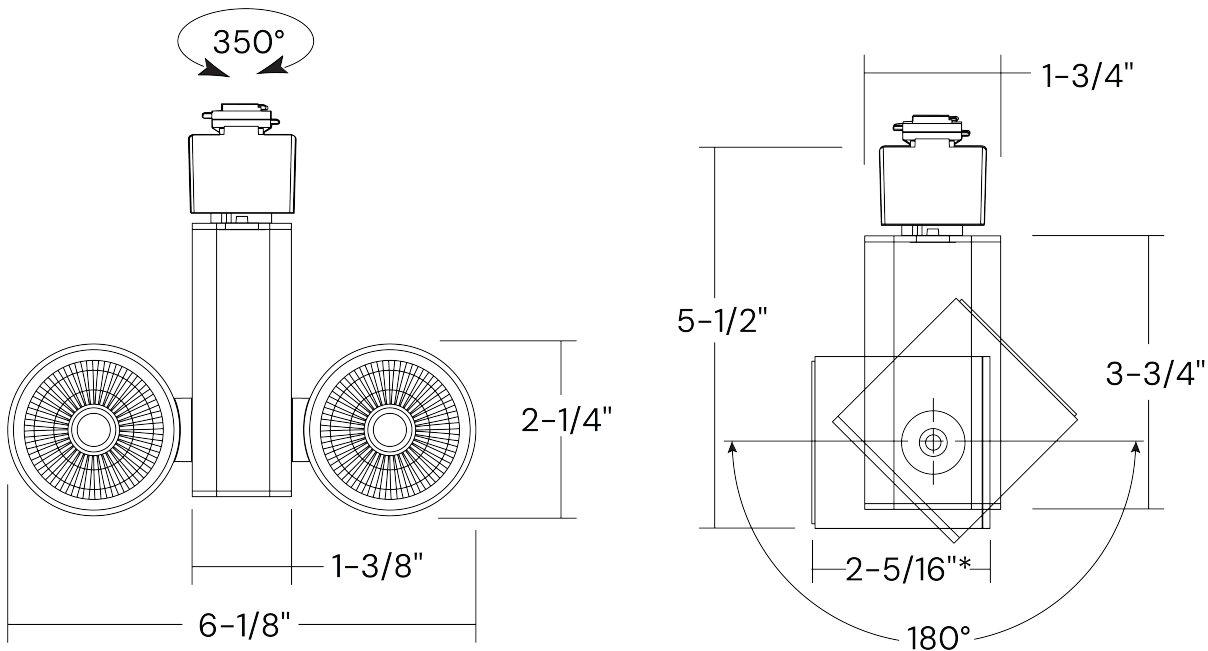
FIXTURE DIMENSIONS

Single Head



*3-13/16" with addition of an Accessory Cap

Double Head



*2-7/16" with addition of Accessory Cap

COLOR TEMPERATURE GUIDE

