

Project Name: \_\_\_\_\_ Type: \_\_\_\_\_ Quantity: \_\_\_\_\_

### INTENDED USE

Our Architectural Cylinder LED Track Light Head delivers high-CRI illumination in a sleek, modern design ideal for commercial, hospitality, and residential interiors. Featuring a built-in color temperature selectable switch for added versatility, this fixture is available in four sizes and compatible with various track styles. Its refined, unobtrusive design makes it a perfect lighting solution for offices, class rooms, conference rooms, museums, retail spaces, hotels, and restaurants.

### FEATURES

**Construction:** Precision-formed, one-piece CNC-spun round aluminum cylinder with threaded top and lens caps for secure assembly and clean aesthetics  
**Lens:** Clear tempered glass  
**Reflector:** Multifaceted Specular  
**Aiming:** The cylinder pivots from 0° to 90° and rotates up to 355° for precise directional lighting control  
**Color Temperature:**  
 Small, Medium, and Large: 27/30/35/40/50K Selectable switch  
 Extra Large: 30/35/40K Selectable switch  
 Double Head: 3000K  
**CRI:** 90+  
**Wattage:** See performance data on pg. 2  
**Voltage:** 120V  
**Driver:** 2-wire incandescent and ELV dimming  
**Life:** 35,000 Hours L70 life based on ANSI TM-21 calculations from LM80 standardized test results  
**Listing:** ETL/cETL listed. Suitable for dry locations only  
**Warranty:** 3 years carefree for parts & components (Labor not included)



Alcon Lighting 14130 Architectural Cylinder LED Track Light Head

### ORDERING INFORMATION Example:

Model	Size	Head	Finish	Beam Spread	Track Style	Circuit	Options
14130	SM MD LG XL	Blank 2'	Single Double WH White BK Black	B15 15° Spot B25 25° Narrow Flood B36 <sup>2</sup> 36° Flood B45 <sup>3</sup> 45° Wide Flood	H <sup>Std.</sup> Halo J Juno L Lightolier	1C 1 Circuit 1 Neutral 2C 2 Circuit 2 Neutral	BH Black Hexcell Louver SN Snoot GR <sup>4</sup> Glow Ring RM <sup>5</sup> Round Monopoint Canopy SM <sup>5</sup> Square Monopoint Canopy

<sup>1</sup> Available only in Small size in static white 3000K. Double Head models use twice the wattage and lumens

<sup>2</sup> Available only in Large and Extra Large sizes

<sup>3</sup> Available only in Small and Medium sizes

<sup>4</sup> Not available in Double Head

<sup>5</sup> Must specify Halo Track Style

PERFORMANCE DATA

Size	Wattage	Lumens
Small (SM)	10W	800 lm
Medium (MD)	18W	1400 lm
Large (LG)	28W	2100 lm
Extra Large (XL)	36W	3300 lm

OPTIONS



Black Hexcell Louver  
LV



Snoot  
SN



Round Monopoint Canopy  
RM



Square Monopoint Canopy  
SM

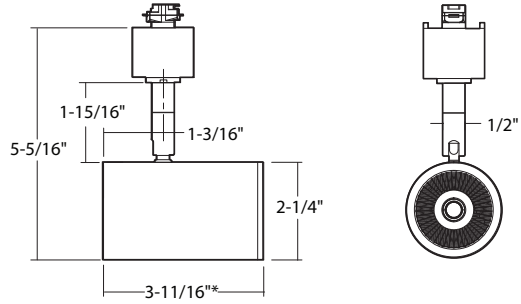
PRODUCT FAMILY ACCESSORIES

- [13000-TC](#) Track Channel
- [13000-LC](#) Linear Connector
- [13000-OA](#) Outlet Adapter
- [13000-SC](#) Slope Ceiling Track Adapter
- [13000-TB](#) T-Bar End Feed
- [13000-FC](#) Floating Canopy
- [13000-EC](#) Connector End Cap
- [13000-LC](#) Live End with Canopy
- [13000-LE](#) Live End
- [13000-L](#) L-Connector
- [13000-T](#) T-Connector
- [13000-X](#) X-Connector
- [13000-MC](#) Mini Connector
- [13000-CP](#) Cord and Plug Connector
- [13000-PA](#) Pendant Adapter
- [13000-CC](#) Conduit Connector
- [13000-CK](#) Conduit Continuation Kit

## LINE DRAWINGS

### Small

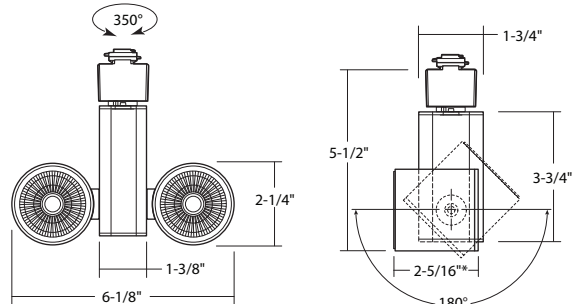
14130-SM



\*3-13/16" with addition of of Accessory Cap

### Small Double Head

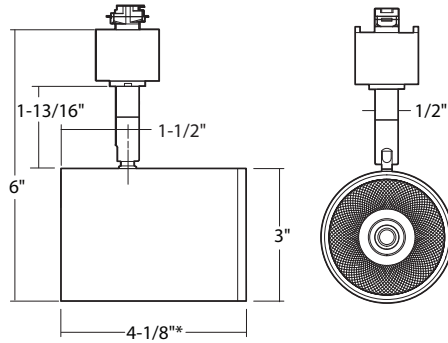
14130-SM-2



\*2-7/16" with addition of Accessory Cap

### Medium

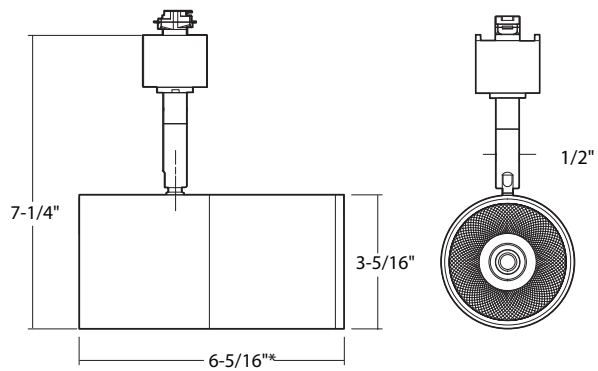
14130-MD



\*4-1/4" with addition of Accessory Cap

### Large

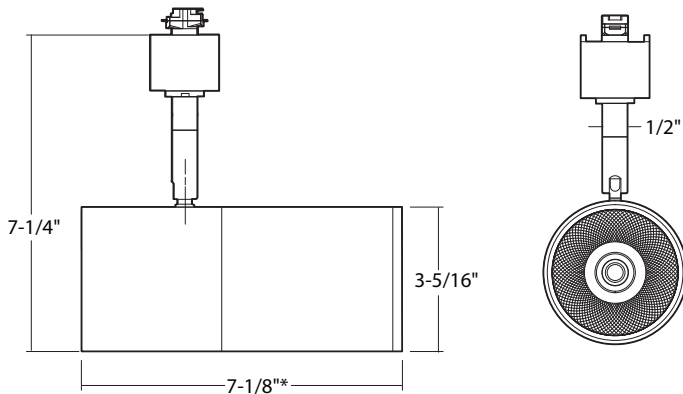
14130-LG



\*6-7/16" with addition of of Accessory Cap

### Extra Large

14130-XL



\*7-1/4" with addition of Accessory Cap

## COLOR TEMPERATURE GUIDE

