

## INSTALLATION INSTRUCTIONS

**WARNING:**



RISK OF FIRE AND ELECTRICAL SHOCK. FIXTURE MUST BE INSTALLED BY A QUALIFIED ELECTRICIAN ONLY IN ACCORDANCE WITH NATIONAL, LOCAL BUILDING AND ELECTRICAL CODES. DISCONNECT POWER AT ELECTRICAL PANEL BEFORE SERVICING.

**WARNING:** Before beginning installation, disconnect electrical power at main switch or circuit breaker.

### Important Safety Instructions:

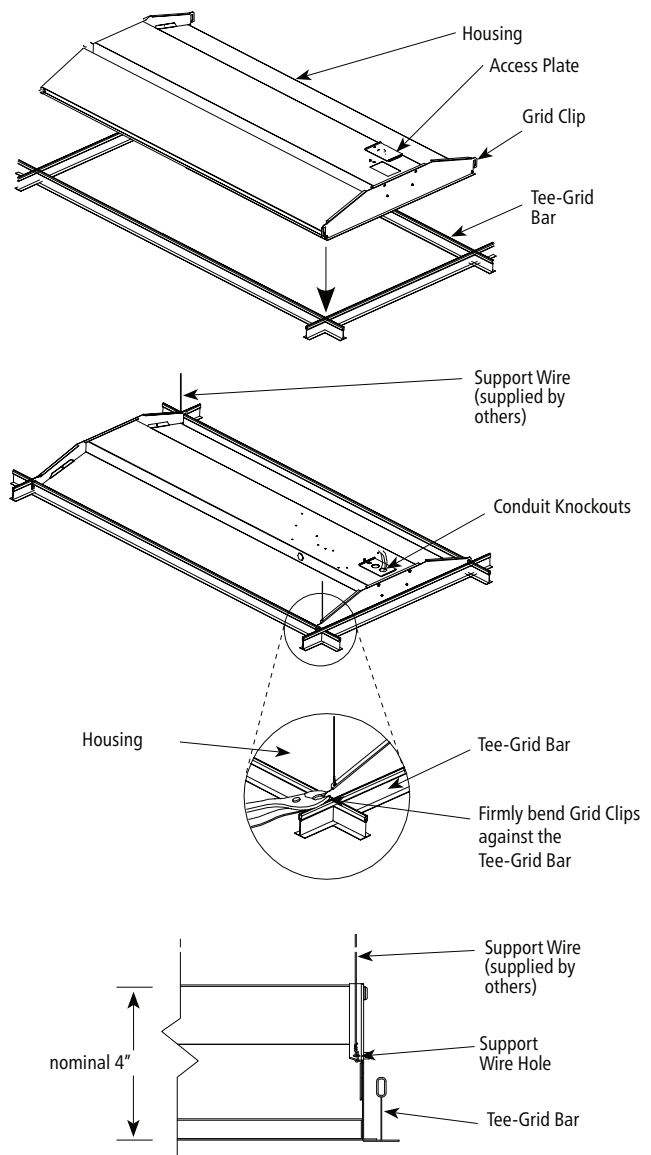
- Ensure all electrical wiring complies with the National Electrical Code (NEC®) and any applicable local regulations.
- Installation and maintenance must be performed by qualified service personnel only.
- Do not install near gas or electric heaters.
- Mount the fixture in locations and at heights that minimize the risk of tampering by unauthorized individuals.
- Do not use accessory equipment not specified or recommended by the manufacturer, as this may create unsafe conditions.
- Any modification or use of non-original components will void the product warranty and liability.
- This product is to be used only as intended. Do not use for any application other than its designated purpose.

### Recessed Ceiling Mounting Instructions

This fixture is intended for indoor recessed ceiling applications only. Above-ceiling access is required.

For installation in insulated or non-insulated 9/16" or 15/16" exposed flat tee-grid ceilings, follow these steps:

1. Rotate and slide the housing as needed to fit through the tee-grid bars, aligning it according to the directional arrow shown in the installation diagram.
2. Secure the housing by firmly bending the four pre-installed grid clips over the tee-grid bars.
3. Support wires are required per installation codes. Attach support wires (supplied by others) from the fixture to the building structure using the support wire holes provided.
4. Ensure the access plate is oriented toward an accessible ceiling tile to allow for electrical connections.
5. Loosen the screw and remove the access plate. Use the appropriate knockout(s) for conduit entry, and install conduit connectors as required by local code.
6. Make wire connections as shown in the wiring diagram. Carefully push all wires into the splice box, ensuring no wires are pinched or exposed to sharp edges.
  - a. **WARNING:** To prevent wiring damage or abrasion, avoid contact with sheet metal edges or other sharp objects.
7. Reinstall the access plate and securely tighten the screw.



## INSTALLATION INSTRUCTIONS

**WARNING:**



RISK OF FIRE AND ELECTRICAL SHOCK. FIXTURE MUST BE INSTALLED BY A QUALIFIED ELECTRICIAN ONLY IN ACCORDANCE WITH NATIONAL, LOCAL BUILDING AND ELECTRICAL CODES. DISCONNECT POWER AT ELECTRICAL PANEL BEFORE SERVICING.



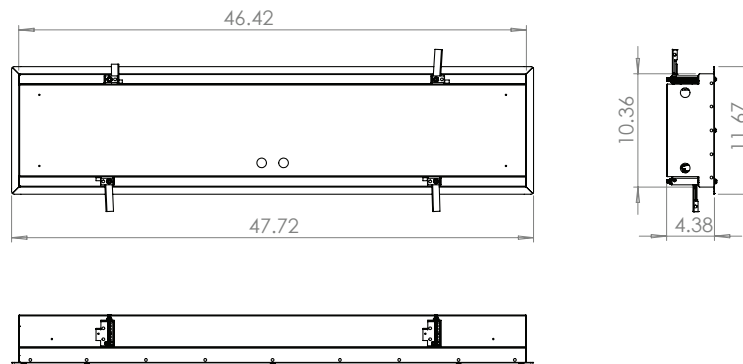
**ROUGH IN SIZE LISTED BELOW.**

Please pay careful attention to these dimensions.

### DIMENSIONS

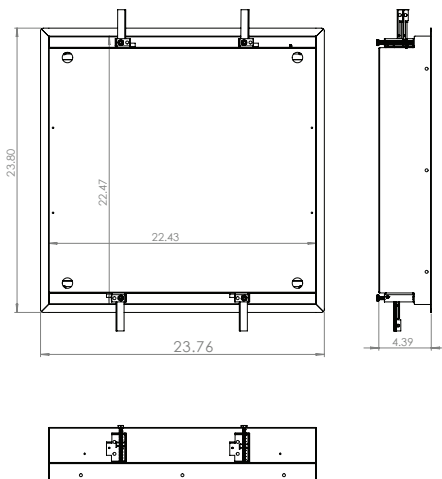
**1'x4'**

ROUGH IN SIZE TO BE 46 11/16" X 10 5/8"



**2'x2'**

ROUGH IN SIZE TO BE 22 5/8" X 22 5/8"



**2'x4'**

ROUGH IN SIZE TO BE 46 5/8" X 22 11/16"

