

Project Name: \_\_\_\_\_ Type: \_\_\_\_\_ Quantity: \_\_\_\_\_

### INTENDED USE

Our Black LED Back-lit Panel Light series offers sleek, energy-efficient illumination for a wide range of indoor commercial environments. Available in three versatile sizes—1 ft x 4 ft, 2 ft x 2 ft, and 2 ft x 4 ft—these panels deliver uniform, glare-free lighting ideal for hotels, offices, retail outlets, restaurants, parking garages, storage rooms, conference rooms, education facilities, and more. Designed for performance and durability.

### FEATURES

**Construction:** Extruded aluminum housing with powder coat black finish. Pre-installed Earthquake & Suspension Hooks

**Installation type:** Surface and Recessed

**CRI:** ≥80

**Voltage:** AC 120V–277V, 50/60Hz

**Dimming Driver:** 0–10V

**Life:** 50,000 Hours

**Power Factor:** >0.90

**Operating Temperature:** -68°F (-20°C) to 104°F (40°C)

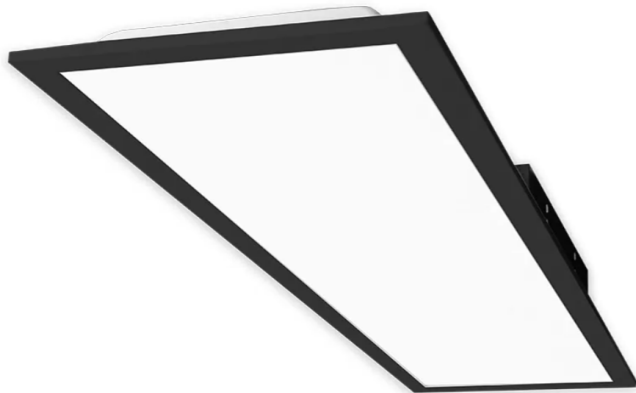
**Fixture Operating Voltage:** 36V DC

**Color Temperature:** 30/35/40/50K Selectable Switch

**Listing:** UL Listed, DLC Listed

**Warranty:** 5 years carefree for parts & components (Labor not included)

**Beam Angle:** 110°



Model	Delivered Lumens	Wattage
1' X 4' 2' X 2'	2200 lm	20W
	3300 lm	30W
	4400 lm	40W
2' X 4'	3300 lm	30W
	4400 lm	40W
	5500 lm	50W



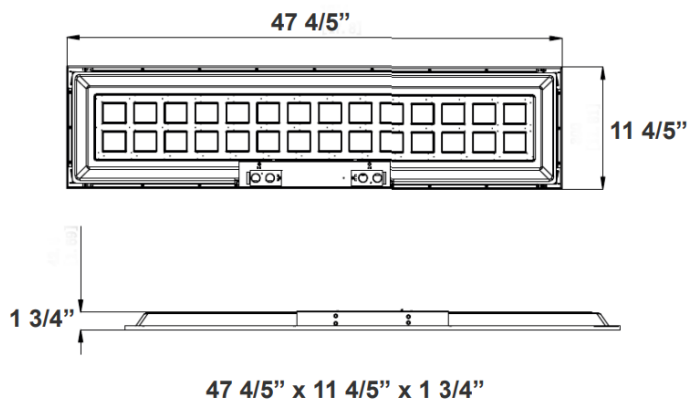
### ORDERING INFORMATION Example:

Model	Mounting	Size	Options
14001	S Surface	14 1' x 4'	XEM20 20W External Emergency Battery
	RT Recessed T-Bar Grid	22 2' x 2'	
	RF <sup>1</sup> Recessed Flanged	24 2' x 4'	

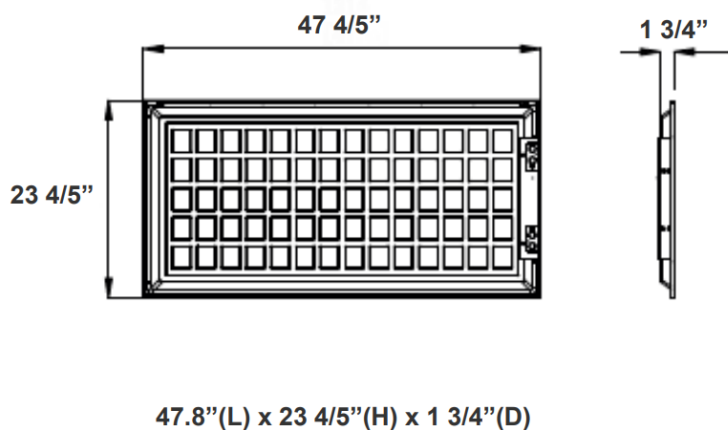
<sup>1</sup>Stainless steel snapping clips included (4)

## LINE DRAWINGS

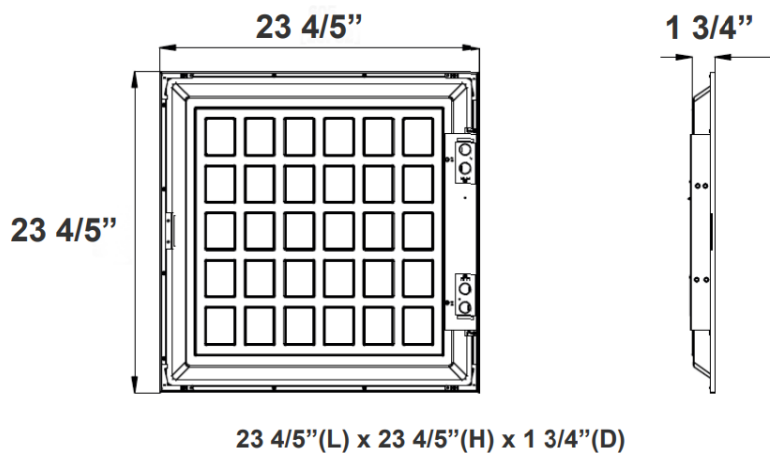
1' x 4'



2' x 4'



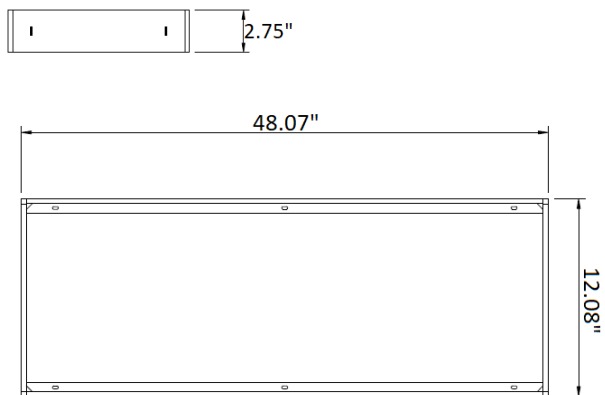
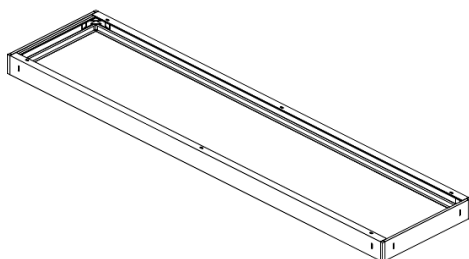
2' x 2'



## SURFACE MOUNTING KIT

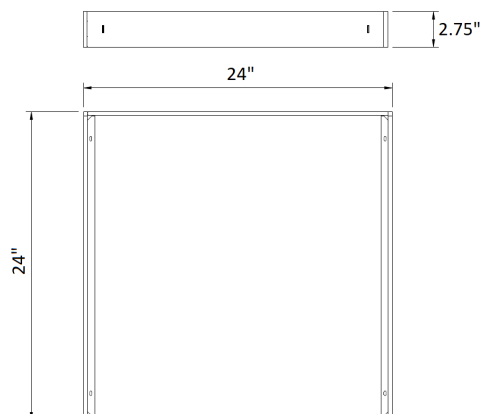
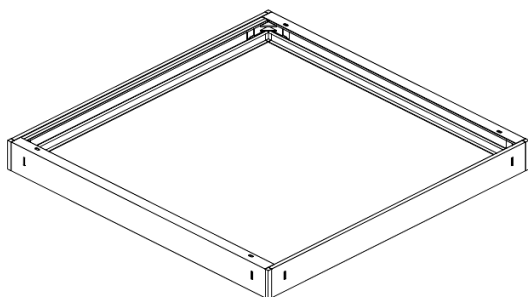
**1' X 4'**

48"(L) x 12"(H) x 2.75"(D)



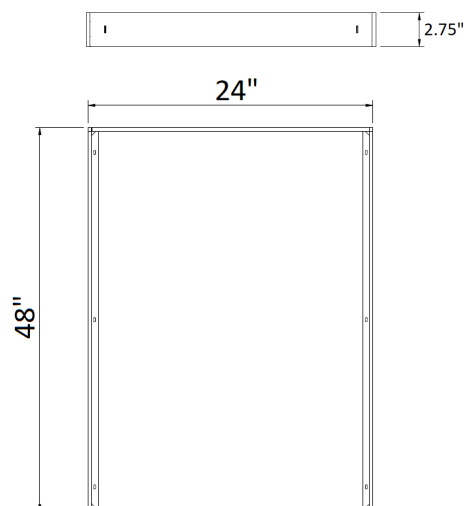
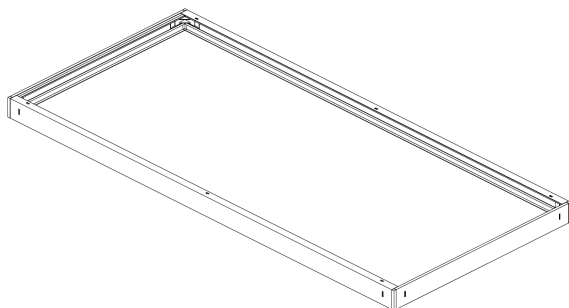
**2' X 2'**

24"(L) x 24"(H) x 2.75"(D)



**2' X 4'**

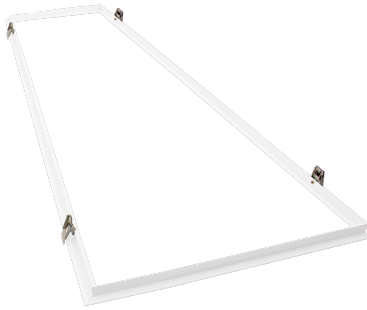
24"(L) x 48"(H) x 2.75"(D)



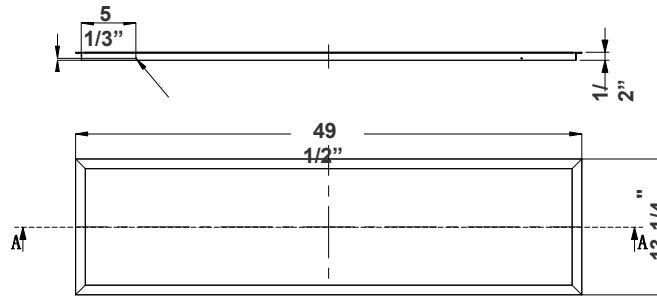
## RECESSED MOUNTING FLANGED KIT (HARD SURFACES)

**1'X4'**

49 1/2" x 13 1/4" x 1/2"

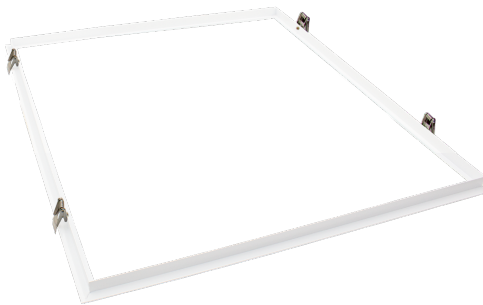


Cutout Dimensions: 47-7/8" X 12-1/8"

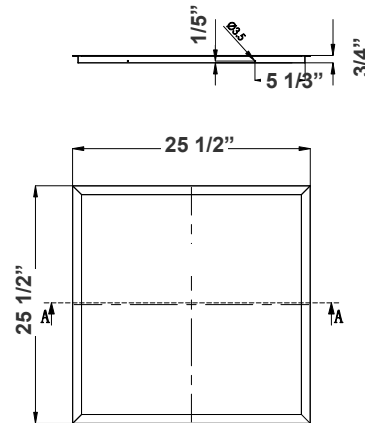


**2'X2'**

25 1/2" x 25 1/2" x 3/4"

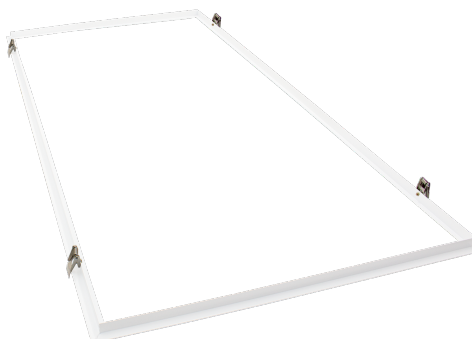


Cutout Dimensions: 23-7/8" X 23-7/8"

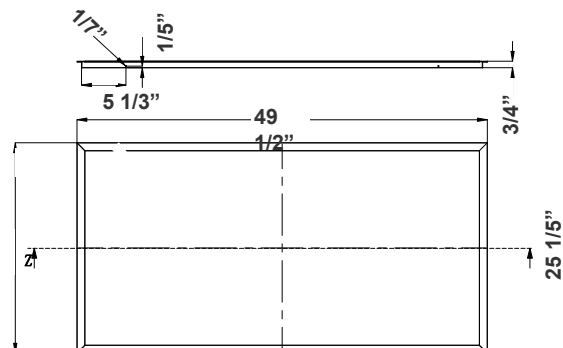


**2'X4'**

49 1/2" x 25 1/5" x 3/4"



Cutout Dimensions: 47-7/8" X 23-7/8"



## COMPATIBLE DIMMERS

	ALCON L I G H T I N G	LUTRON	LEVITON®
0-10 V	<a href="#">2100</a> <a href="#">2101</a> <a href="#">2102</a>	Diva DVTV	IP-710-DL

## COLOR TEMPERATURE GUIDE

