

Project Name:

Type:

Quantity:

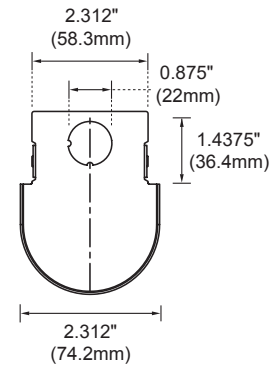
FIXTURE SPECIFICATIONS

INTENDED USE

Our high-C.R.I., rounded LED tubular pendant, wall or surface-mounted light is ideal for healthcare interiors. This fully enclosed, slim, modern linear fixture with antimicrobial finish provides perfect downlighting for doctor's offices, hospitals and other medical facility applications. The fully enclosed linear chandelier is finished with antimicrobial white paint to resist bacteria, rust and corrosion. Manufactured in cold-rolled, welded and die-formed 22-gauge steel with a glare-free, snap-in frosted acrylic lens, this damp location-rated product, assembled in America. 120 to 277 voltage.

FEATURES

- Construction:** Die-formed and welded 22-gauge cold rolled steel
- Lens:** Glare-free snap-in frosted acrylic for even distribution
- Voltage:** 120-277V
- Finish:** White antimicrobial finish
- Life:** 50,000 hours
- Warranty:** 5 years (static colors) and 2 years (tunable white) carefree for parts & components (labor not included)
- Listings:** cULus Listed, DLC Listed, Suitable for damp locations, CEC Compliant EM, Assembled in the USA



ORDERING INFORMATION Example: (12527-S-S-2-D218-30K-8-010)

Model	Mount	Shape	Single Run	Wattage	Lumen	Color Temp	CRI	Dimming	Pendant Mounting	Warranty	Options
12527	S	S	2', 4' or 8'	2 Foot	27K <sup>1</sup>	2700K	8	010	Blank	Blank <sup>Standard</sup>	EM5
	Surface	Single Run	Specify Run Length in Feet	D218	2514 Lumens	30K	80+	0-10V 10%-100%	None Required	5 Year Warranty	5W EM Battery Backup
	Wall	Continuous Run		D227	3941 Lumens	35K	90+	Bi-Level Step Dimming 50%/100%	48" Adjustable Aircraft Cable	7 Year Warranty	EM8
	Pendant			D236	4945 Lumens	40K		Bi-Level Step Dimming Replace X with Percentage from 10%-90%	96" Adjustable Aircraft Cable	10 Year Warranty	8W EM Battery Backup
				D427	3873 Lumens	50K		Tri-Level Step Dimming 30%/70%/100%	24" Stem Mount Kit		EM16
				D436	5140 Lumens	Tunable White		Tri-Level Step Dimming Replace X and X with Percentages from 10%-90%	48" Stem Mount Kit		16W EM Battery Backup
				D454	7513 Lumens	2000-6500K		050			DD
				D472	10017 Lumens	Tunable White		Tunable White 0-10V			Integrated Daylight
				D827	4140 Lumens						Dimming Photosensor
				D836	5446 Lumens						OS
				D854	8006 Lumens						Integrated Occupancy Sensor
				D872	10704 Lumens						
				D8108	14454 Lumens						
				D8144	19271 Lumens						

<sup>1</sup> Must be paired with 90+ CRI option  
<sup>2</sup> Must be paired with 050 driver