

Project Name: \_\_\_\_\_ Type: \_\_\_\_\_ Quantity: \_\_\_\_\_

### INTENDED USE

Our series surface-mounted LED fixtures offer versatile lighting for residential, retail, and hospitality spaces. Available in three sizes, two finishes, and six interchangeable modules—Fixed Downlight, Gimbal, Panel, Snoot Gimbal, Spot, and Suspension—they deliver modern design, high performance, and flexibility. Ideal for new constructions or renovations where recessed lighting isn't possible.

### FEATURES

**Construction:** 18-gauge powder-coated steel body  
**Installation type:** Mounts over octagon box (not included)  
**CRI:** 90+  
**Voltage:** 120V–277V  
**Driver:** TRIAC/ELV/0–10V (Dim to 1%)  
**Life:** 50,000 Hours  
**Power Factor:** ERP 10W or 15W, Constant Current 250mA or 350mA power supply  
**Operating Temperature:** –22°F (–30°C) to 122°F (50°C)  
**Listing:** IESNA LM-79 and LM-80 tested. ETL and cETL Listed. RoHS compliant. Made in the USA  
**Warranty:** 5 years carefree for parts & components (Labor not included)



1 Light



2 Lights



3 Lights



### ORDERING INFORMATION Example:

Model	Light	Finish	Light Module <sup>3</sup>	Color Temperature	Wattage   Lumens <sup>2</sup>	Beam Spread	Lens
12300	1	BK Black	FD Fixed Downlight	27K 2700K	10 10W   810 lm	B15 15° Narrow	CL Clear
	2	WH White	G Gimbal	30K 3000K	10H 10W   1090 lm	B24 24° Spot	LN Linear Spread
	3		P Panel	35K 3500K	15 15W   1430 lm	B38 38° Flood	FR Frosted
			SG Snoot Gimbal	40K 4000K		B50 50° Wide Flood	SP Solite
			S Spot	DTW Dim To Warm			HC Honeycomb louver
			SU Suspension				

<sup>1</sup> Panel light, Spot light and Suspension light available only in 15W.  
 Available only in 30K/40K color temperature. No beam spread. No diffuser

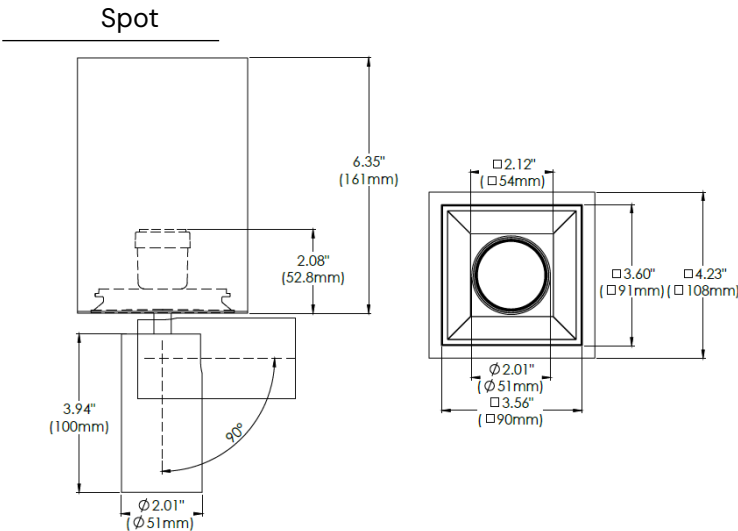
<sup>2</sup> 10W IC: 810 LM, 10H IC: 1090 LM, 15W Non-IC: 1430 LM,  
 Dim to Warm: 15W, 785 LM

<sup>3</sup> Wet location is available only with Fixed Downlight

LIGHT MODULE

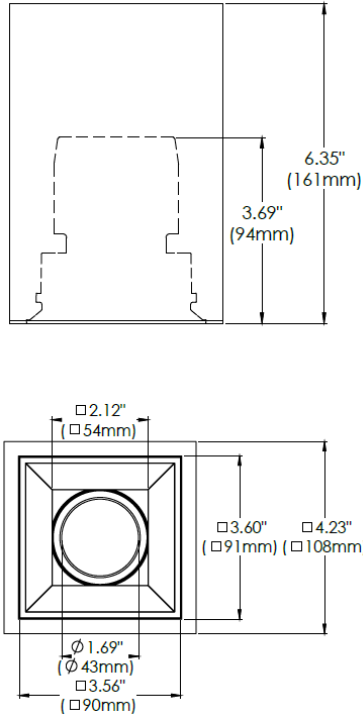


LINE DRAWINGS

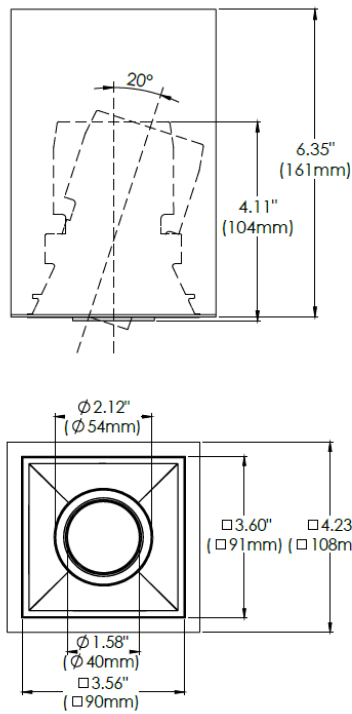


## LINE DRAWINGS

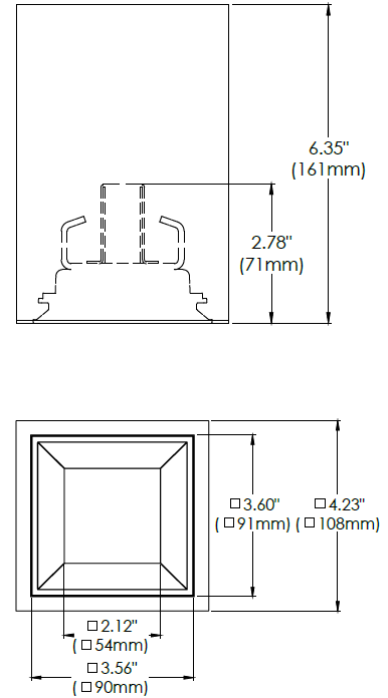
Fixed  
Downlight



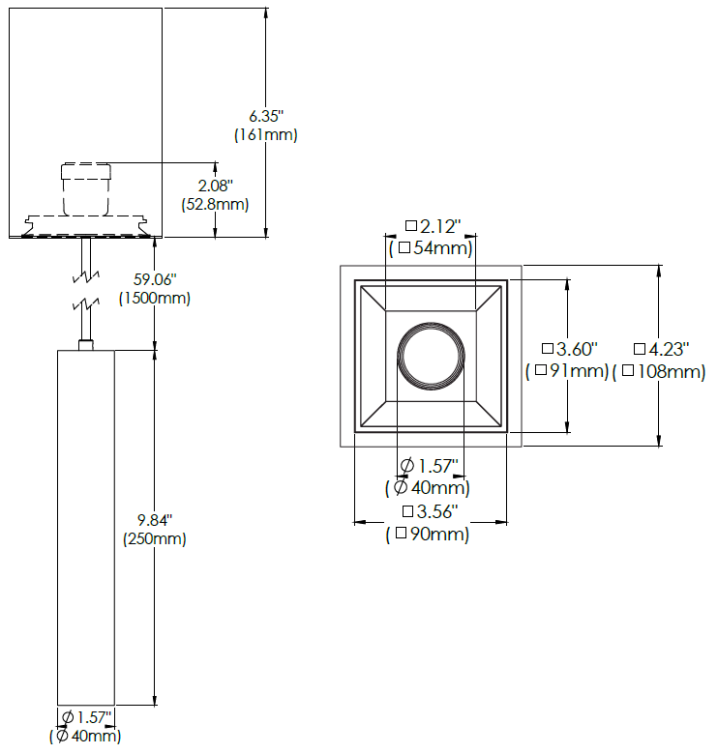
Snoot Gimbal



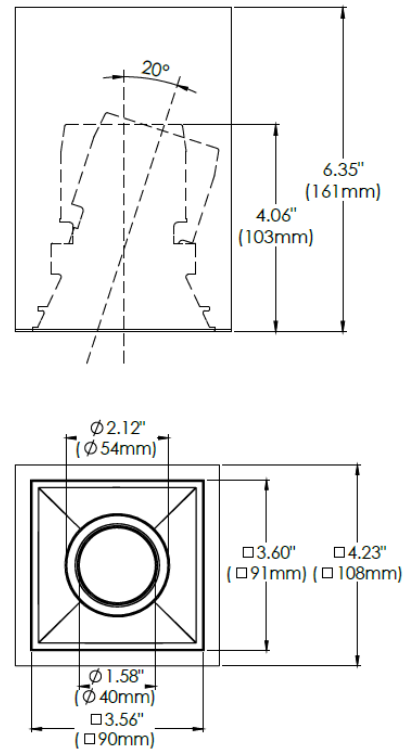
Panel



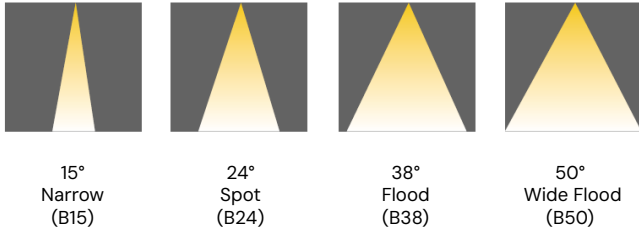
Suspension



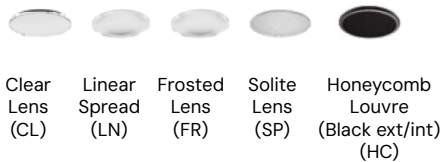
Gimbal



## REFLECTOR OPTIONS



## LENS OPTIONS



## DRIVERS

- Compatible with TRIAC (forward-phase or leading-edge) ELV (reverse-phase or trailing edge) and 0-10V dimmers.
- TRIAC and ELV dimming only at 120 Vac
- ELV dimming only at 230 Vac
- 90° C maximum case hot spot temperature
- Class 2 power supply
- Lifetime: 50,000 hours at 70° case hot spot temperature (some models have a higher lifetime)
- IP64-rated (IP66 for ESST) case with silicone-based potting
- Protections: Output open load, over-current and short-circuit (hiccup), and over-temperature with auto recovery.
- Conducted and radiated EMI: Compliant with FCC CFR Title 47 Part 15 Class B (120 Vac) and Class A (277 Vac), and EN55015 (CISPR 15) at 220, 230, and 240 Vac.
- Complies with ENERGY STAR®, DLC (DesignLight Consortium®) and CA Title 24 technical requirements
- Worldwide safety approvals

LED Driver Enclosed



## COLOR TEMPERATURE GUIDE

<p><b>2700K</b></p> <p><b>WARM WHITE</b></p> <p>friendly personal intimate</p> <p>HOMES LIBRARIES RESTAURANTS</p> <p>✓</p>	<p><b>3000K</b></p> <p><b>SOFT WHITE GLOW</b></p> <p>soft warm pleasing</p> <p>HOMES HOTEL ROOMS LOBBIES RETAIL STORES</p> <p>✓</p>	<p><b>3500K</b></p> <p><b>NEUTRAL GLOW</b></p> <p>sociable inviting non-threatening</p> <p>EXECUTIVE OFFICES RECEPTION AREAS SUPERMARKETS</p> <p>✓</p>	<p><b>4000K</b></p> <p><b>COOL WHITE GLOW</b></p> <p>neat clean efficient</p> <p>OFFICES CLASSROOMS MASS MERCHANTISERS SHOWROOMS</p> <p>✓</p>	<p><b>5000K</b></p> <p><b>DAYLIGHT GLOW</b></p> <p>bright cool alert</p> <p>GRAPHICS INDUSTRY HOSPITALS GALLERIES BEAUTY SALONS</p> <p>✗</p>
--	---	--	---	--