

INTENDED USE

Our series surface-mounted LED fixtures offer versatile lighting for residential, retail, and hospitality spaces. Available in three sizes, two finishes, and six modules—Fixed Downlight, Gimbal, Panel, Snoot Gimbal, Spot, and Suspension—they deliver modern design, high performance, and flexibility. Ideal for new constructions or renovations.

FEATURES

Construction: 18-gauge powder-coated steel body

Installation type: Mounts over octagon box (not included)

CRI: 90+

Voltage: 120V-277V

Dimming Driver: TRIAC/ELV/0-10V (Dim to 1%)

Life: 50,000 Hours

Power Factor: ERP 10W or 15W, Constant Current 250mA or 350mA power supply

Operating Temperature: -22°F (-30°C) to 122°F (50°C)

Listing: IESNA LM-79 and LM-80 tested. ETL and cETL Listed. RoHS compliant. Made in the USA

Warranty: 5 years carefree for parts & components (Labor not included)



1 Light



2 Lights



3 Lights



ORDERING INFORMATION Example:

Model	Light		Finish		Light Module ³		Color Temperature		Wattage Lumens ²		Beam Spread		Lens	
12300	1	1-Light	BK WH	Black White	FD	Fixed Downlight	27K	2700K	8L	10W 810 lm	B15	15° Narrow	CL	Clear
	2	2-Light			G	Gimbal	30K	3000K	10L	10W 1090 lm	B24	24° Spot	LN	Linear Spread
	3	3-Light			P ¹	Panel	35K	3500K	14L	15W 1430 lm	B38	38° Flood	FR	Frosted
					SG	Snoot Gimbal	40K	4000K			B50	50° Wide Flood	SP	Solite
					S ¹	Spot	DTW	Dim To Warm					HC	Honeycomb
					SU ¹	Suspension							louvre	

¹ Panel light, Spot light and Suspension light available only in 15W. Available only in 30K/40K color temperature. No beam spread. No diffuser

² 10W IC: 810 LM, 10H IC: 1090 LM, 15W Non-IC: 1430 LM, Dim to Warm: 15W, 785 LM

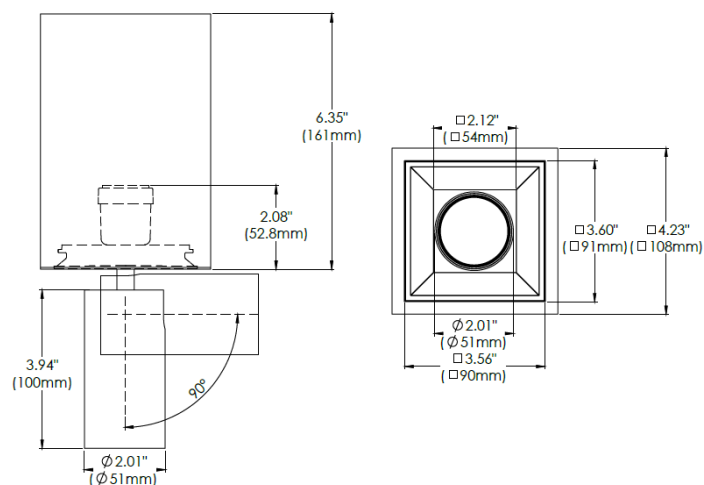
³ Wet location is available only with Fixed Downlight

LIGHT MODULE

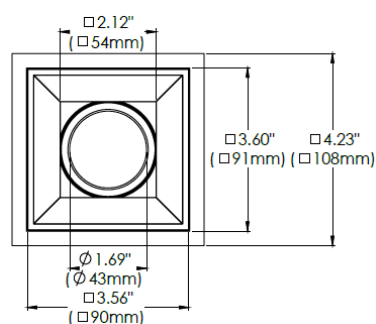
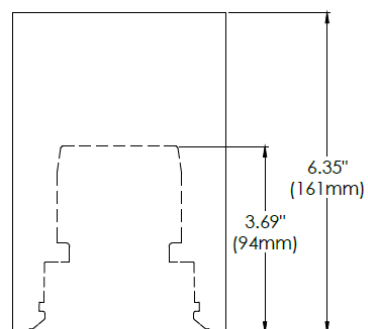


LINE DRAWINGS 1-LIGHT

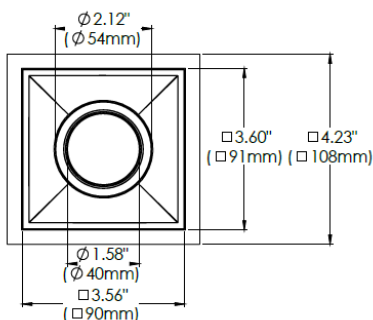
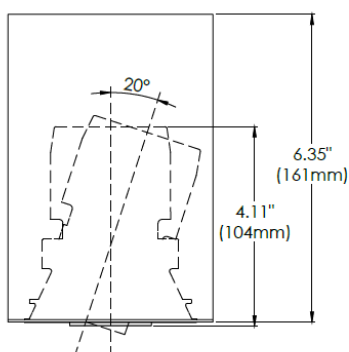
Spot



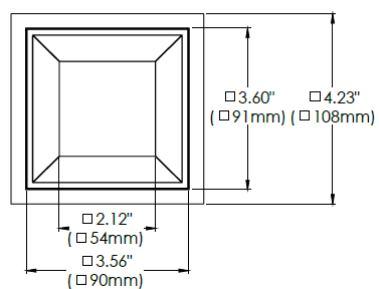
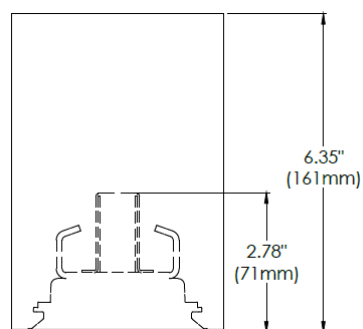
Fixed
Downlight



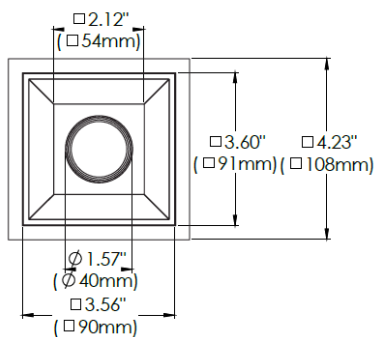
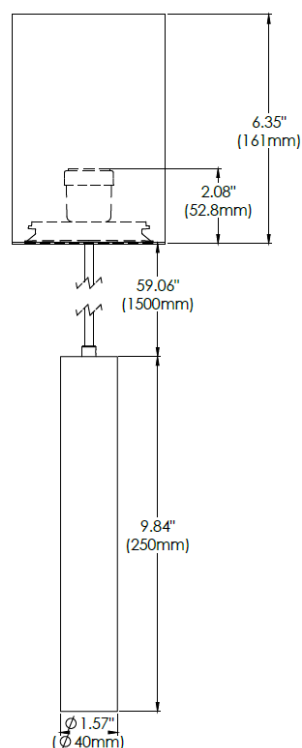
Snoot Gimbal



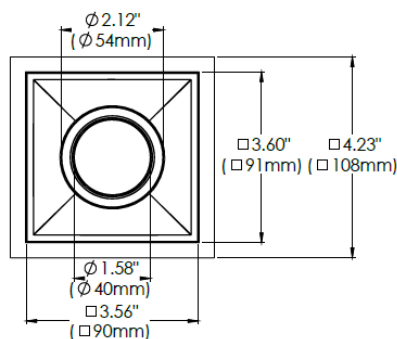
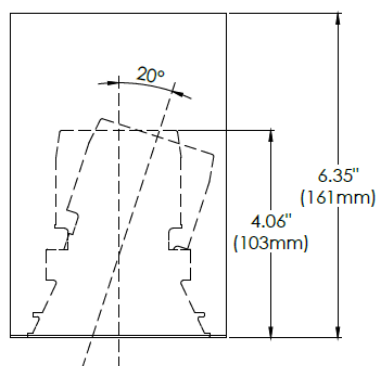
Panel



Suspension

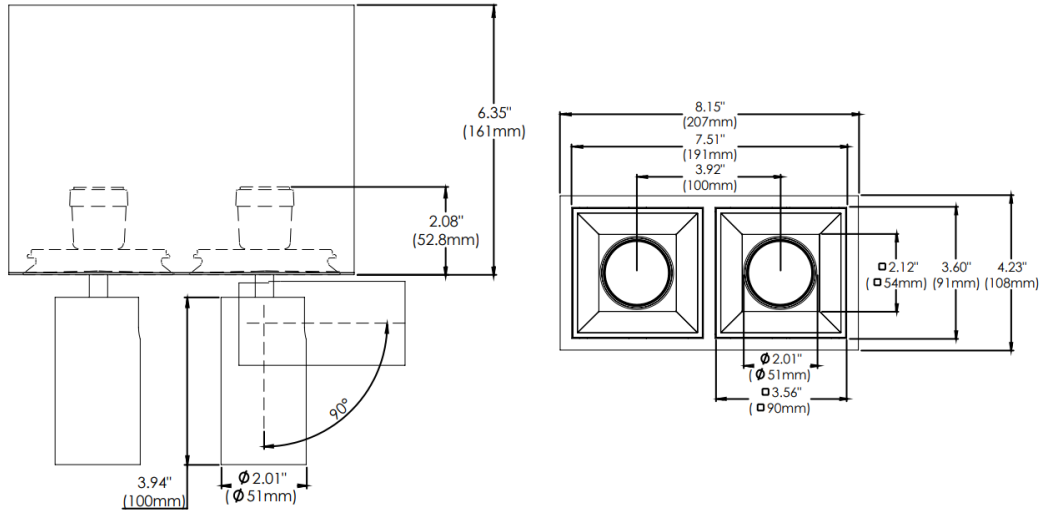


Gimbal

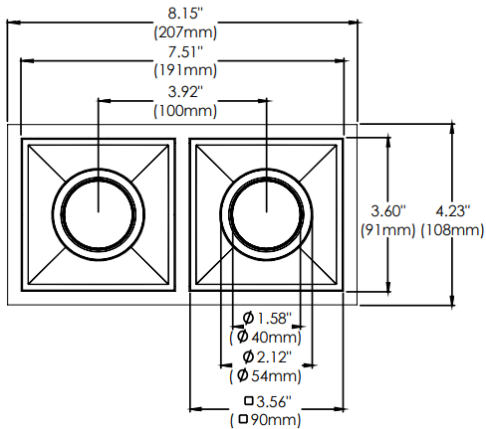
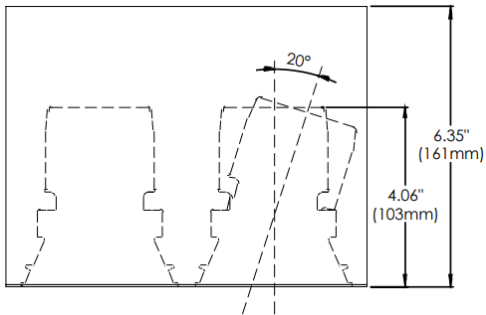


LINE DRAWINGS 2-LIGHT

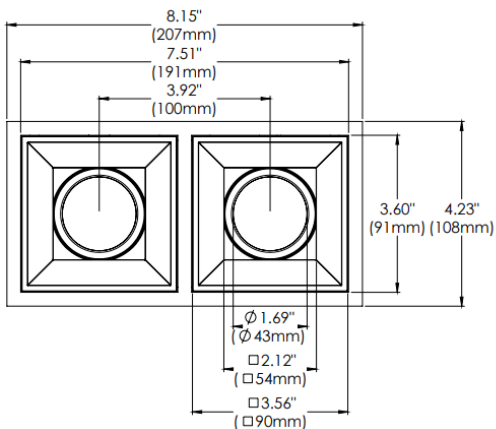
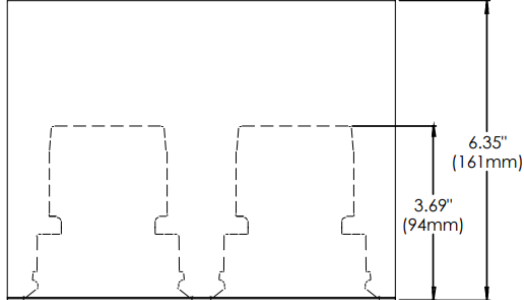
Spot



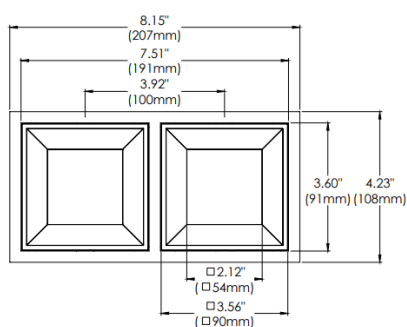
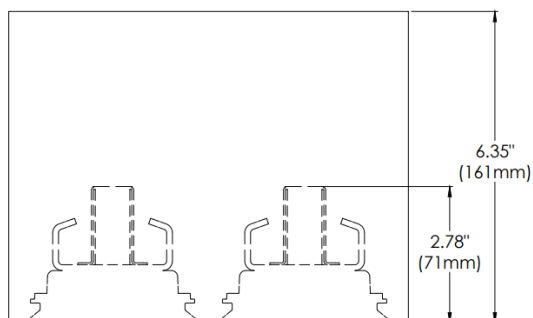
Gimbal



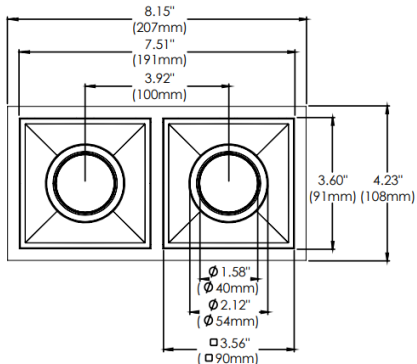
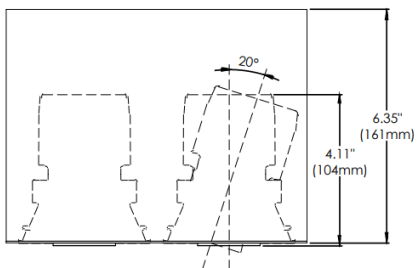
Fixed Downlight



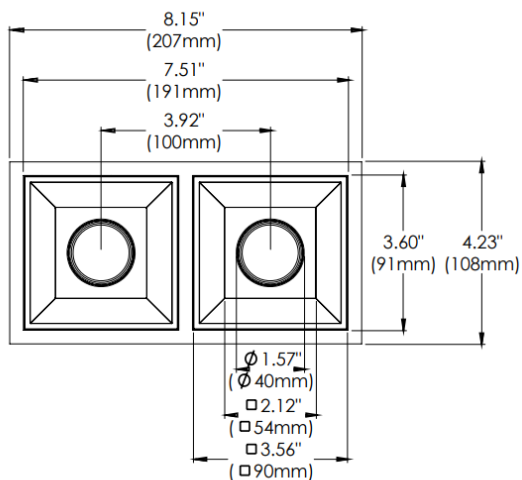
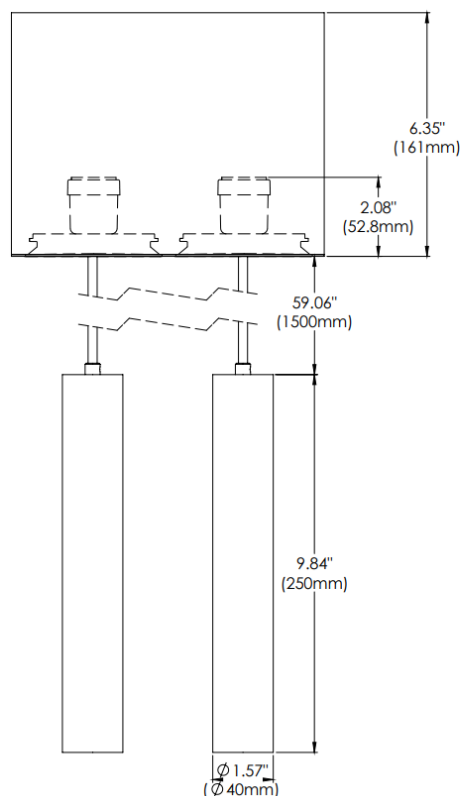
Panel



Snoot Gimbal

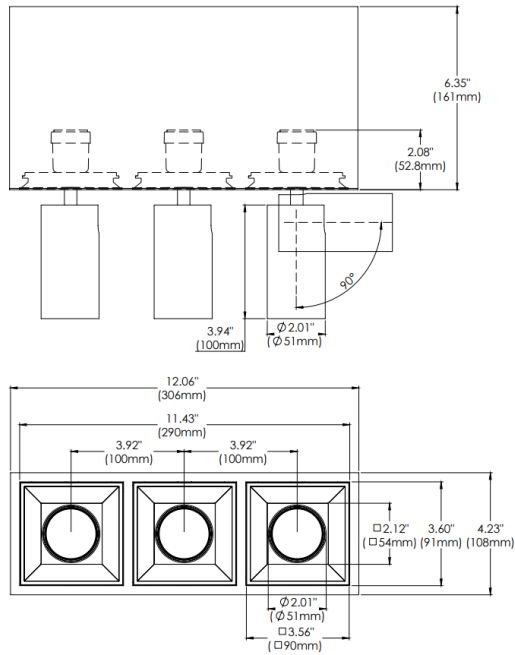


Suspension

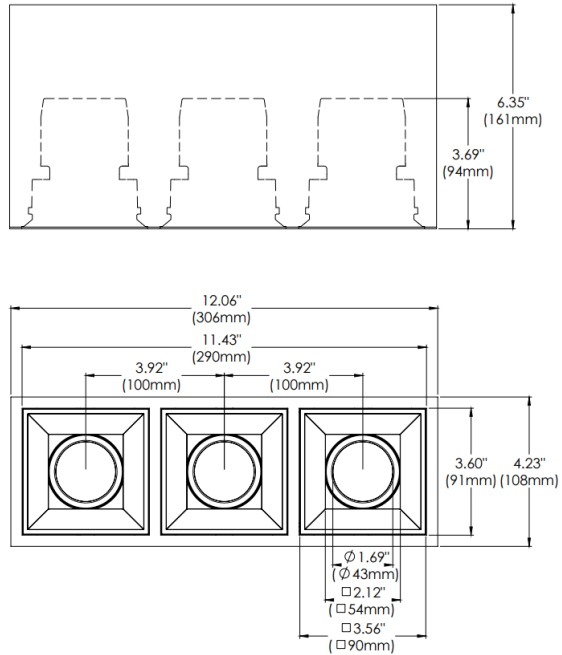


LINE DRAWINGS 3-LIGHT

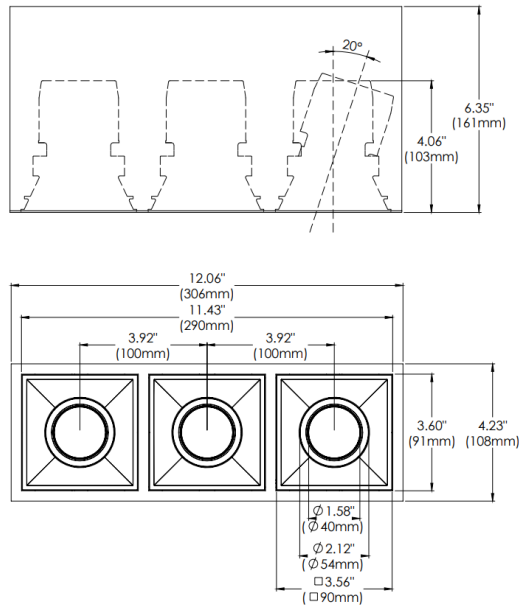
Spot



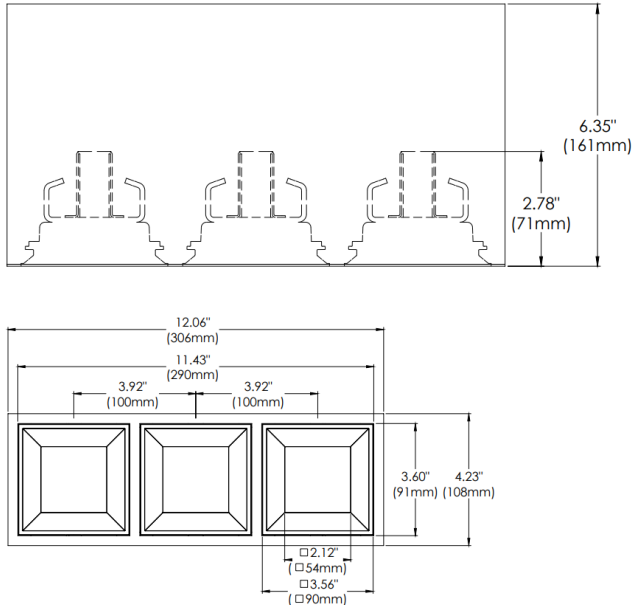
Fixed Downlight



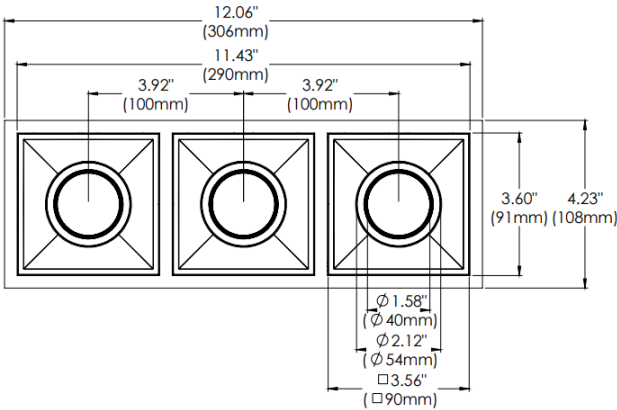
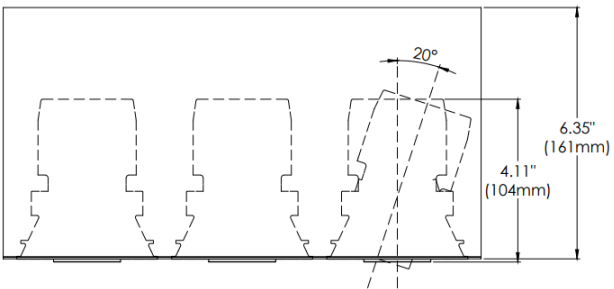
Gimbal



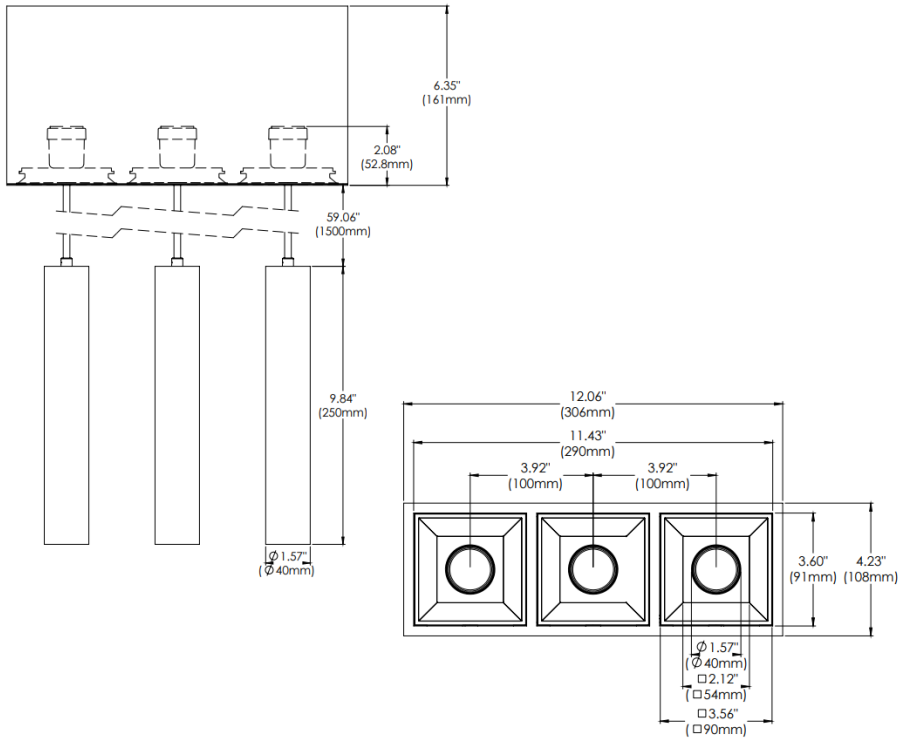
Panel



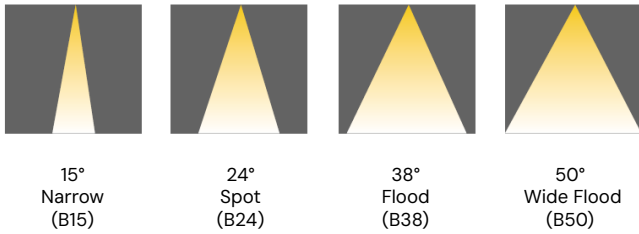
Snoot Gimbal



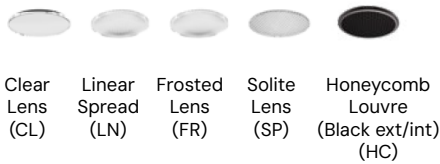
Suspension



BEAM SPREAD



LENS



COMPATIBLE DIMMERS



Triac
ELV
0-10V

ESS030W-0700-42
ESST040W-0900-42

ESS030W-0700-42

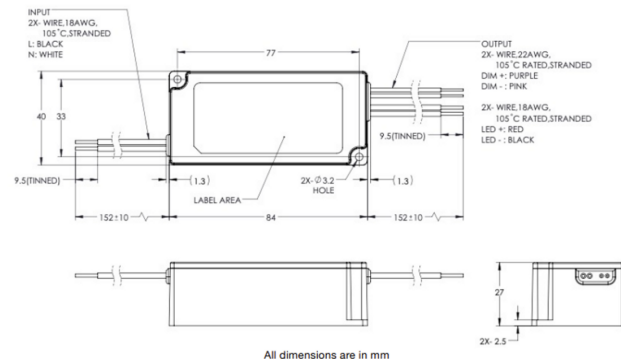
ESS Series – up to 30W
Output Current: 700 mA
Output Voltage Range: 24 to 42 V
Max Output Power: 29.4 W
Input Voltage: 120 to 277 VAC
Dimming: Tri-Mode Dimming™ (TRIAC, ELV & 0-10 V)
Case Type: Plastic (IP64 rated)
Dimensions: 84 x 40 x 25.2 mm
Typical Efficiency: ~87%
Lifetime: Up to 109,000 hours (depending on model and conditions)

ESST040W-0900-42

ESST Series – 40W class
Output Current: 900 mA
Output Voltage Range: 24 to 42 V
Max Output Power: 37.8 W
Input Voltage: 120 to 277 VAC
Dimming: Tri-Mode Dimming™ (TRIAC, ELV & 0-10 V)
Case Type: Thermally Enhanced Plastic (IP66 rated)
Dimensions: 84 x 40 x 27 mm
Typical Efficiency: ~87%
Lifetime: Up to 96,500 hours at 70°C case temperature



Dimensions: L 84 x W 40 x H 27 mm (L 3.30 x W 1.57 x H 1.06 in)
Volume: 90.7 cm³ (5.53 in³)
Weight:



COLOR TEMPERATURE GUIDE

<p>2700K</p> <p>WARM WHITE</p> <p>friendly personal intimate</p> <p>HOMES LIBRARIES RESTAURANTS</p> <p>✓</p>	<p>3000K</p> <p>SOFT WHITE GLOW</p> <p>soft warm pleasing</p> <p>HOMES HOTEL ROOMS LOBBIES RETAIL STORES</p> <p>✓</p>	<p>3500K</p> <p>NEUTRAL GLOW</p> <p>sociable inviting non-threatening</p> <p>EXECUTIVE OFFICES RECEPTION AREAS SUPERMARKETS</p> <p>✓</p>	<p>4000K</p> <p>COOL WHITE GLOW</p> <p>neat clean efficient</p> <p>OFFICES CLASSROOMS MASS MERCHANTISERS SHOWROOMS</p> <p>✓</p>	<p>5000K</p> <p>DAYLIGHT GLOW</p> <p>bright cool alert</p> <p>GRAPHICS INDUSTRY HOSPITALS GALLERIES BEAUTY SALONS</p> <p>✗</p>
---	--	---	--	---