

Project Name: _____ Type: _____ Quantity: _____

INTENDED USE

The slender, circle chandelier mounts on the surface emitting a 120° beam angle from a seamless metallic frame with the ability to switch color temperatures ranging from 3000K, 3500K and 4000K. Available in several finishes.

FEATURES

Color Temperature: Features the ability to switch color temps from 300K, 3500K and 4000K.

Construction: Seamless Aluminum Frame

Beam Angle: 120°

Lens: High Transmittance Acrylic

Voltage: 100-277V

Power Factor: 3.≥0.97

CRI: 90+

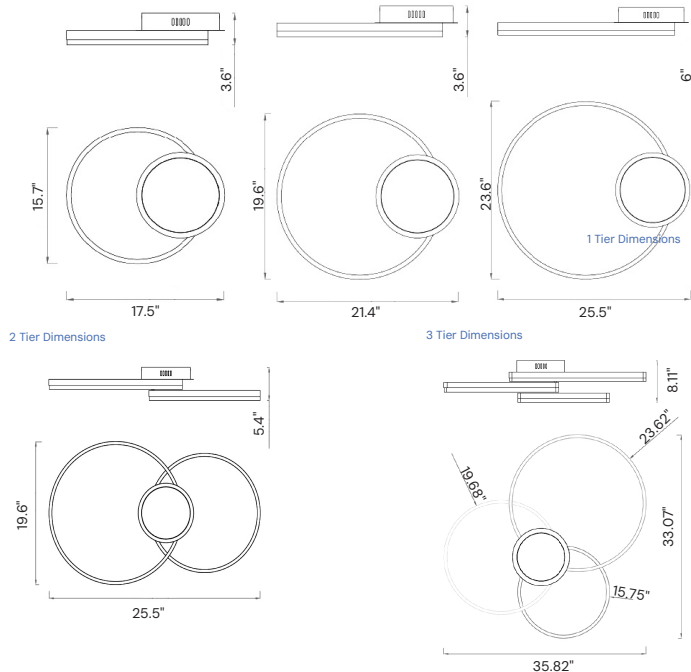
Dimming: 0-10V Dimmable

Life: 50,000-hour at 25°C

Operating Temperature: -40°C to 45°C, -40°F to 122°F

Warranty: 5 Years Carefree for Parts & Components (Labor Not Included)

Listings: UL, cULus, FCC listed, RoHS compliant, Dry location, Buy American compliant (BAA).

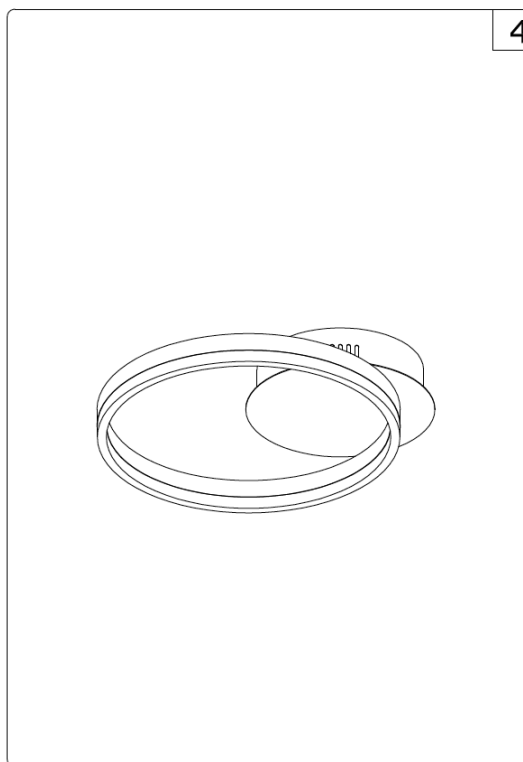
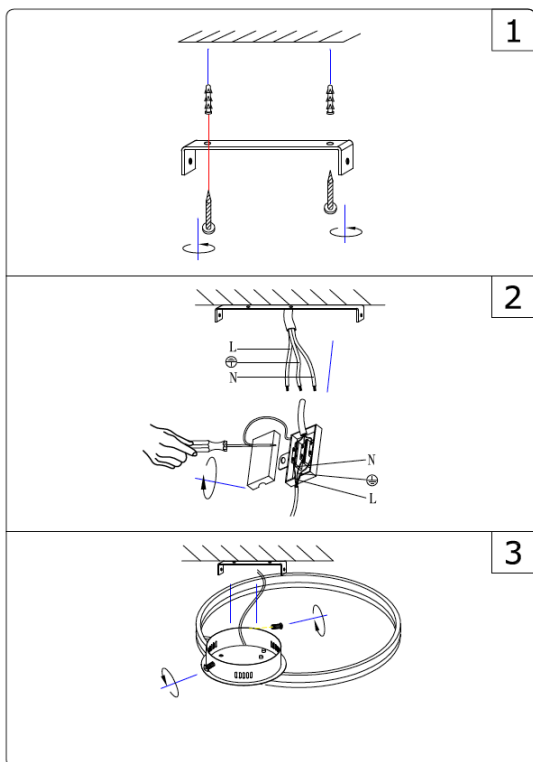


ORDERING INFORMATION Example: 12277-1-16-WH

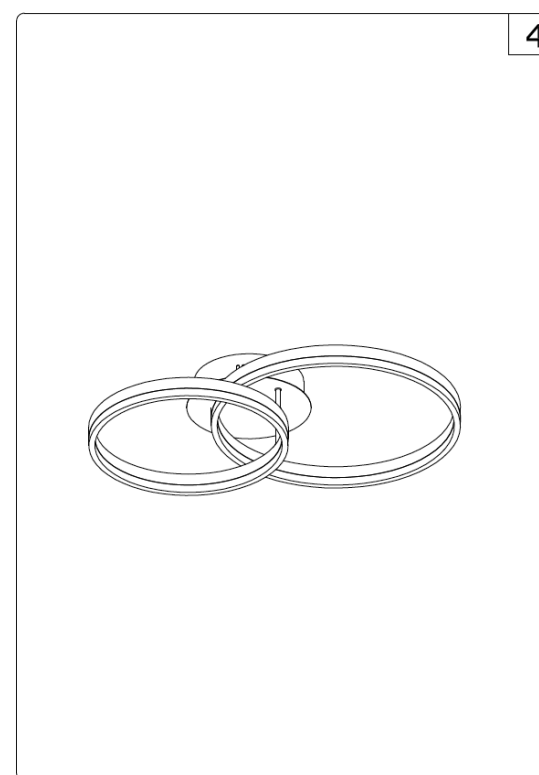
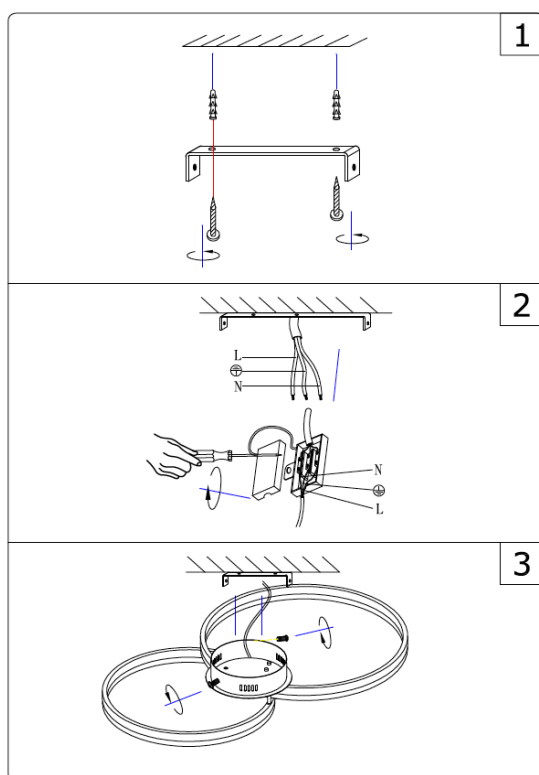
Model	Rings	Finish	Options
12277 Surface Mount	1 Tier	Standard	
	1-16 (15.75" 20 Watts 1600lm)	WH White	REM5 5W External Emergency Backup Battery
	1-23 (23.62" 30 Watts 2400lm)	BK Black	REM10 10W External Emergency Backup Battery
	1-31 (31.50" 40 Watts 3200lm)	SL Silver	REM17 17W External Emergency Backup Battery
	2 Tier	BR Oil Rubbed Bronze	
	2-16-24 (15.75" + 23.62" 50 Watts 4000lm)	Premium	
	2-23-31 (23.62" + 31.50" 60 Watts 4800lm)	OR Hermes Orange	
	3 Tier	YE Bijan Yellow	
	3-16-20-24 (15.75" + 23.62" + 31.50" 90 Watts 7200lm)	RE Fire Engine Red	
		Plated	
		PL Platinum	
		RG Rose Gold	
		BG Burnished Gold	

1 & 2 TIER INSTALLATION INSTRUCTIONS

1 Tier

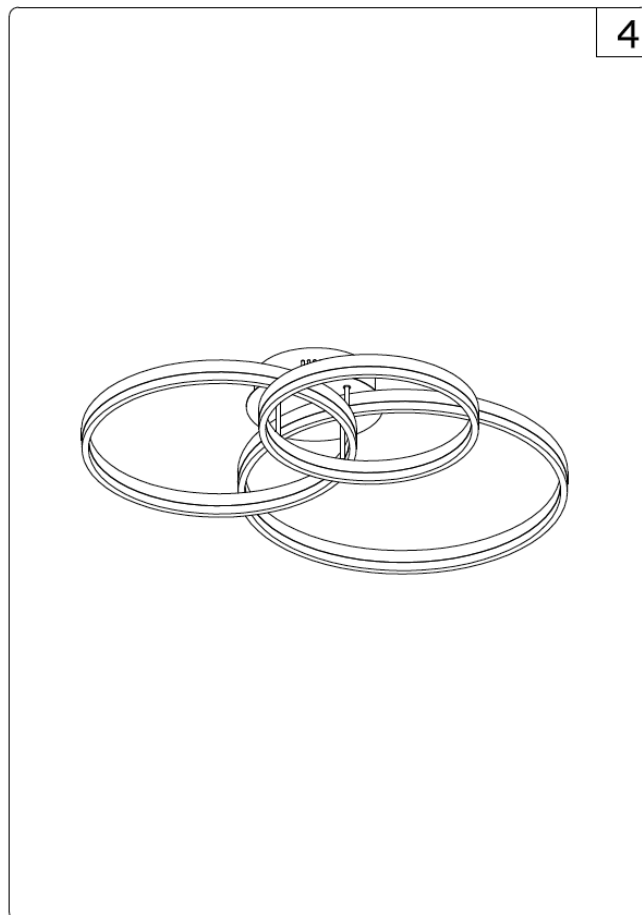
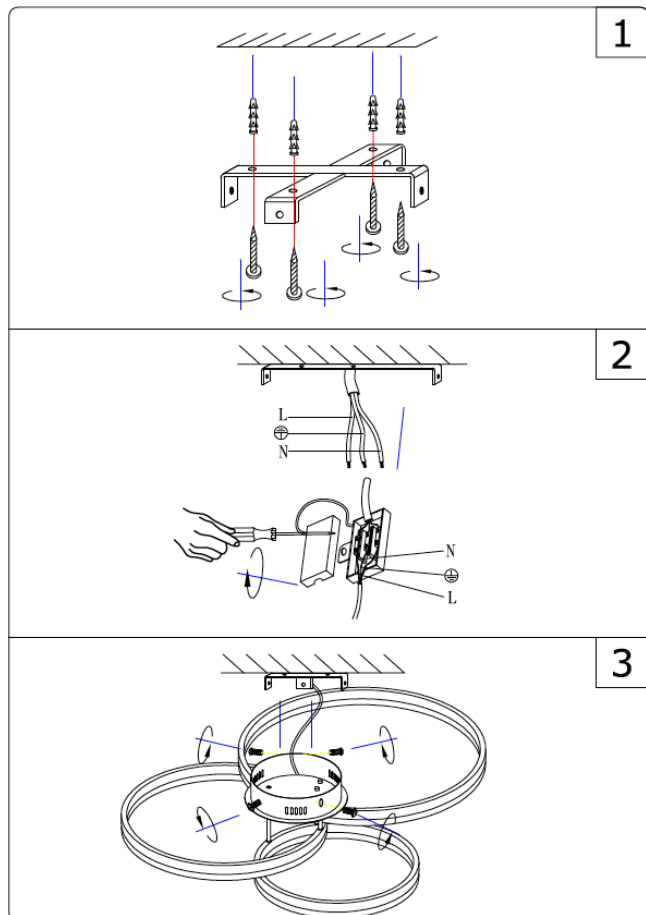


2 Tier



3 TIER INSTALLATION INSTRUCTIONS

3 Tier



COLOR TEMPERATURE GUIDE

