

Project Name:

Type:

Quantity:

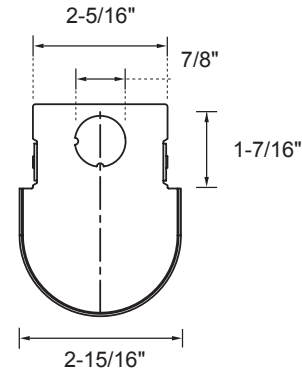
FIXTURE SPECIFICATIONS

INTENDED USE

Built with a die-formed, corrosion-resistant steel channel with knockouts for versatile configuration and easy mounting, the pendant or surface-mount LED light strip offers efficient lighting in a compact design. The product yields energy savings with crisper brightness that's ideal for industrial, commercial and institutional interiors. The glossy finish is baked white enamel. The diffused lens is frosted in acrylic. Electrical specifications meet Class 1 or Class 2. Circuit voltage is 120-277 (50/60 Hz). Our premium product suits damp locations.

FEATURES

- Construction:** Die-formed steel channel with knock-outs for versatile configuration and easy mounting corrosion resistant
- Finish:** High-gloss baked white enamel
- Lens:** Frosted acrylic diffuser
- Electrical:** Meets Class 1 or Class 2 Circuit
- Voltage:** 120-277 (50/60 Hz)
- Dimming:** 0-10V 1~100%
- CRI:** 83+
- Efficiency:** 126 lm/W
- Power Factor:** +0.95
- THD:** <20
- Operating Temperature:** -20°C (-4°F) - 50°C (122°F)
- Life:** 50,000 Hours (L80)
- Warranty:** 5 Years
- Listings:** UL/cUL Listed and sabeled, DLC Listed, Suitable for damp locations



ORDERING INFORMATION Example: (12184-P-S4-D427-WH-30K-8-010-AC48-T-WH)

Model	Mount	Shape	Single Run		Wattage Lumen	Finish	Color Temp	CRI	Driver	Pendant Mounting	Pendant Ceiling Type	Pendant Cord/Stem Color	Options
			2', 4' or 8'	Cont. Run									
12184	Pendant S Surface	S CR Continuous Run	Specify Run Length in Feet	2 Foot	D218	White	2700K	80+CRI	010 Standard	(Blank)	(Blank)	(Blank)	EM5
				18 Watts 2433 Lumens	SL	30K	9	TRI	AC48	T	WH	EM8	
				D227	Silver	3000K	90+ CRI	Triac (120V)	48" Adjustable Aircraft Cable	T-Bar Ceiling	White	8W Emergency Backup Battery	
				27 Watts 3941 Lumens	BK	35K	ELV	AC96	96" Adjustable Aircraft Cable	Hard Ceiling	Black	EM16	
				D236	Black	3500K	Electronic Low Voltage	ST24	24" Stem Mount Kit	Sloped Hard Ceiling		16W Emergency Backup Battery	
				36 Watts 4944 Lumens	Specify RAL #	4000K	050	ST48	48" Stem Mount Kit		DD		
	4 Foot	D427	Tunable White										
	27 Watts 3726 Lumens	D436	White										
	36 Watts 5005 Lumens	D454	2700K-5000K										
	54 Watts 7316 Lumens	D472	2000K-6500K										
	72 Watts 10006 Lumens	D8108											
	108 Watts 14030 Lumens	D8144											
144 Watts 18704 Lumens													

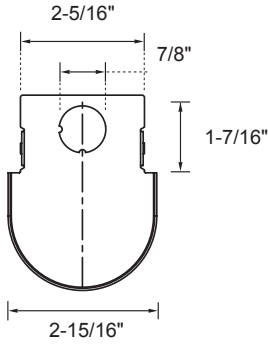
1 Must be paired with 90+ CRI
2 Must be paired with 050 Driver



Alcon 12184 Chela Commercial-Grade Linear LED Pendant or Surface Light Strip

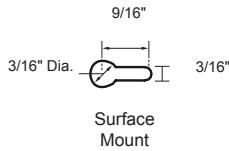
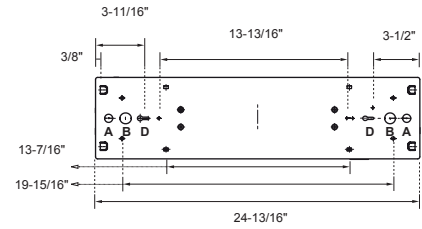
DIMENSIONS

END VIEW

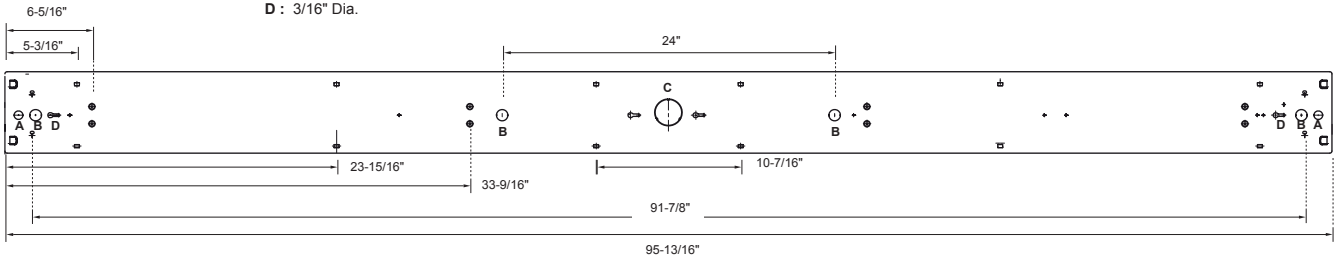
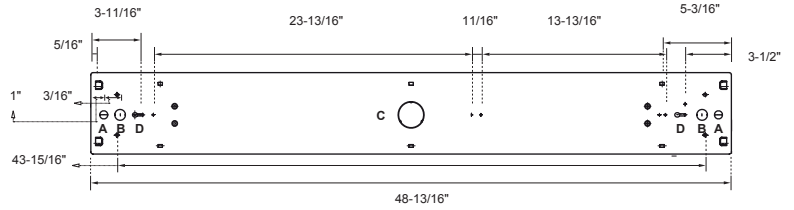


Specifications: 12184-2 Specifications: 12184-4 Specifications: 12184-8
 Weight: 4.7 lbs (2.13 kg) Weight: 6.9 lbs (3.13 kg) Weight: 10.43 lbs (4.73 kg)

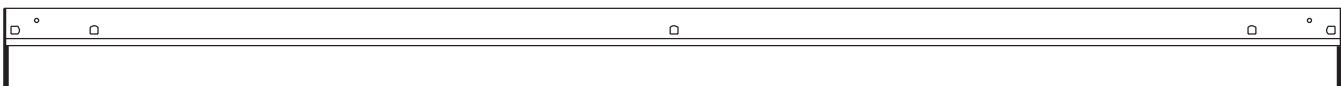
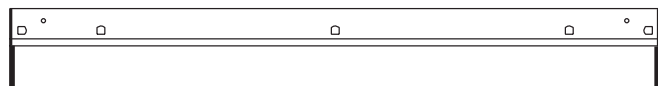
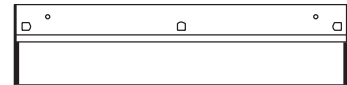
TOP VIEW



- A : 11/16" Dia.
- B : 7/8" Dia.
- C : 2" Dia.
- D : 3/16" Dia.



SIDE VIEW



Controls Installed on the Fixture



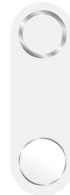
FCJS-010
Individual
Fixture Control

Fixture Will be Shipped LUTRON VIVE Enabled with LUTRON FCJS-010 0-10V Control Module Installed on the Fixture. Fixtures will be compatible with Lutron FC-SENSOR Occupancy/Daylight Sensor or FC-VSENSOR Vacancy/Daylight Sensor which can be Added in the Field for Remote Mounting. Fixture May be Controlled with any Vive control systems. Fixtures must be ordered with a 0-10V. Driver.



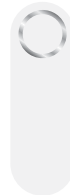
FCJS-ECO
Individual
Fixture Control

Fixture Will be Shipped LUTRON VIVE Enabled with LUTRON FCJS-ECO EcoSystem Control Module Installed on the Fixture. Fixtures will be compatible with Lutron FC-SENSOR Occupancy/Daylight Sensor or FC-VSENSOR Vacancy/Daylight Sensor which can be Added in the Field for Remote Mounting. Fixture May be Controlled with any Vive control systems. Fixtures must be ordered with a Lutron Driver.



DFCSJ-OEM-OCC

Fixture Will be Shipped LUTRON VIVE Enabled with DFCSJ-OEM-OCC* Vive Integral Fixture Control (with Sensing) Installed on the Fixture. Fixture May be Controlled with any Vive control systems. Fixtures must be ordered with a DMX or Lutron EcoSystem Driver



DFCSJ-OEM-RF

Fixture Will be Shipped LUTRON VIVE Enabled with LUTRON DFCSJ-OEM-RF* Vive Integral Fixture Control (RF Only) Installed on the Fixture. Fixture May be Controlled with any Vive control systems. Fixtures must be ordered with a DMX or Lutron EcoSystem Driver.

Controls Provided by Lutron



Vive Wireless Hub



DayLight
Sensor



Ceiling Mount
Occupancy/Daylight
Sensor



Ceiling Mount
Occupancy Sensor



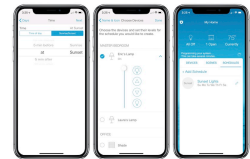
Pico
Remote



Wall Mount
Switch



Wall Mount
Occupancy Sensor



Lutron App

Fixture will be shipped with Leviton ZL027-N0W power control module installed on the fixture. Fixtures will be compatible with Leviton ZL00J-D0W sensor control module which can be added in the field for remote mounting. Fixture must be controlled with Leviton Intellect Keypad Room Controller, or Leviton Neuron App.



ZL027-N0W
Power control module



ZL00J-D0W
Sensor control module

Leviton Keypad



ZLDNK-1W



ZLDNK-2W



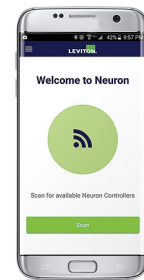
ZLDNK-4W



ZLDNK-8W

Intellect™ Keypad Room
Controller (Required)

Leviton App



Neuron App



Philips EasySense sensors provide luminaire-level control with Occupancy sensing, Daylight harvesting, and Field task tuning.

Controls Installed on the Fixture



PHILIPS-XSR + SNS200

Fixture will be Shipped with EasySense SNS200 Sensor installed and PHILIPS-XSR driver. Fixture May Only be Controlled with Philips Field App or Wireless Switches.



SRB + SNS200

Fixture Will be Shipped with EasySense SNS200 Sensor installed and PHILIPS SRB Bridge. Fixture May Only be Controlled with Philips Field App or Wireless Switches or any 0-10V. Wall Box Dimmer.



Controls Provided by Philips



ZBT-S1AWH



ZBT-S2AWH

Ilumra Wireless Switches



PHILIPS-XSR + SNS200-CMP

Fixture will be Shipped Sensor Ready with PHILIPS-XSR driver and EasySense SNS200-CMP Sensor which is Included to be Remote Mounted. Fixture May Only be Controlled with Philips Field App or Wireless Switches



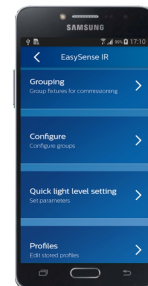
SRB + SNS200-CMP

Fixture Will be Shipped Sensor Ready with PHILIPS SRB Bridge and EasySense SNS200-CMP Sensor which is Included to be Remote Mounted. Fixture May Only be Controlled with Philips Field App or Wireless Switches or any 0-10V. Wall Box Dimmer.





SRB

Fixture will be Shipped Sensor Ready with SRB Bridge. Fixture will be Compatible with EasySense Sensor SNS200-CMP which can be Added in the Field for Remote Mounting. Fixture May Only be Controlled with Philips Field App or Wireless Switches or any 0-10V. Wall Box Dimmer.



Philips Field App

COMPATIBLE DIMMERS

MFG	Triac	ELV	0-10
	TG-600P LG-600P TGCL-153P DV-600P DVCL-153P S-603PG CT-103P S-600P	DVELV-303P SELV-300P MAELV-600 FAELV-500	NTSTV NFTV DVSTV
		6161 6633-P 6683 6631-2 IPI06-1LZ	IPE04 VPE06-1LZ IP710-DLZ

COLOR TEMPERATURE GUIDE



PHOTOMETRICS

12184-2-D218-30K

Illuminance at a Distance

	Center Beam FC	Beam Width	
1.7FT	286 FC	2.8 FT	3.4 FT
3.3FT	75.9 FC	5.4 FT	6.5 FT
5.0FT	33.1 FC	8.1 FT	9.9 FT
6.7FT	18.4 FC	10.9 FT	13.3 FT
8.3FT	12.0 FC	13.5 FT	16.4 FT
10.0FT	8.27 FC	16.3 FT	19.8 FT

- Vert. Spread: 78.2°
- Horiz. Spread: 89.5°

12184-2-D236-30K

Illuminance at a Distance

	Center Beam FC	Beam Width	
1.7FT	557 FC	4.5 FT	5.9 FT
3.3FT	148 FC	8.7 FT	11.4 FT
5.0FT	64.3 FC	13.2 FT	17.3 FT
6.7FT	35.8 FC	17.6 FT	23.1 FT
8.3FT	23.3 FC	21.8 FT	28.7 FT
10.0FT	16.1 FC	26.3 FT	34.5 FT

- Vert. Spread: 105.5°
- Horiz. Spread: 119.9°

12184-4-D427-30K

Illuminance at a Distance

	Center Beam FC	Beam Width	
1.7FT	436 FC	4.5 FT	5.9 FT
3.3FT	116 FC	8.7 FT	11.4 FT
5.0FT	50.4 FC	13.2 FT	17.3 FT
6.7FT	28.1 FC	17.6 FT	23.1 FT
8.3FT	18.3 FC	21.8 FT	28.7 FT
10.0FT	12.6 FC	26.3 FT	34.5 FT

- Vert. Spread: 105.5°
- Horiz. Spread: 119.9°

12184-4-D454-30K

Illuminance at a Distance

	Center Beam FC	Beam Width	
1.7FT	846 FC	4.5 FT	5.9 FT
3.3FT	224 FC	8.7 FT	11.4 FT
5.0FT	97.8 FC	13.2 FT	17.3 FT
6.7FT	54.4 FC	17.6 FT	23.1 FT
8.3FT	35.5 FC	21.8 FT	28.7 FT
10.0FT	24.4 FC	26.3 FT	34.5 FT

- Vert. Spread: 105.5°
- Horiz. Spread: 119.9°

12184-8-D872-30K

Illuminance at a Distance

	Center Beam FC	Beam Width	
1.7FT	1,205 FC	4.5 FT	5.9 FT
3.3FT	320 FC	8.7 FT	11.4 FT
5.0FT	139 FC	13.2 FT	17.3 FT
6.7FT	77.6 FC	17.6 FT	23.1 FT
8.3FT	50.5 FC	21.8 FT	28.7 FT
10.0FT	34.8 FC	26.3 FT	34.5 FT

- Vert. Spread: 105.5°
- Horiz. Spread: 119.9°

12184-8-D8108-30K

Illuminance at a Distance

	Center Beam FC	Beam Width	
1.7FT	1,645 FC	2.8 FT	3.4 FT
3.3FT	437 FC	5.4 FT	6.5 FT
5.0FT	190 FC	8.1 FT	9.9 FT
6.7FT	160 FC	10.9 FT	13.3 FT
8.3FT	69.0 FC	13.5 FT	16.4 FT
10.0FT	47.5 FC	16.3 FT	19.8 FT

- Vert. Spread: 78.2°
- Horiz. Spread: 89.5°