



READ ALL INSTRUCTIONS BEFORE INSTALLATION. IMPROPER INSTALLATION MAY RESULT IN ELECTRIC SHOCK, SERIOUS INJURY, OR DEATH. FOLLOW ALL APPLICABLE ELECTRICAL CODES FOR YOUR SAFETY.

IMPORTANT SAFETY INSTRUCTIONS

1. Do not install on-off switch at the output (load) side of a constant current LED driver as it will damage the fixture(s) and will void the warranty on both driver and fixture(s).
2. Fixtures must be wired as per Alcon Lighting's instruction (series wiring for constant current driver and parallel wiring for constant voltage drivers.) Failures due to improper installation will void warranty.



Specifications

- **Input Voltage:** 120–277V AC, 50/60 Hz
- **Output Voltage:** 2–55V DC
- **Output Current:** 700mA Constant
- **Maximum Wattage:** 30W
- **Power Factor:** ≥ 0.9
- **Typical Efficiency:** 85%

Protections

- Short Circuit Protection
- Overload Protection
- Over-voltage Protection

Controls

- **Dimming Protocol:** 0–10V
- **Dimming Range:** 1% to 100% (flicker-free)

Physical Details

- **Weight:** 0.63 lb
- **Case Material:** Metal

Recommended Load

- **Application:** 2W LED fixtures
- **Input Voltage:** 120–277V
- **Load Range:** 1 to 10 LED modules
- **Dimming Option:** Supported

Application Conditions

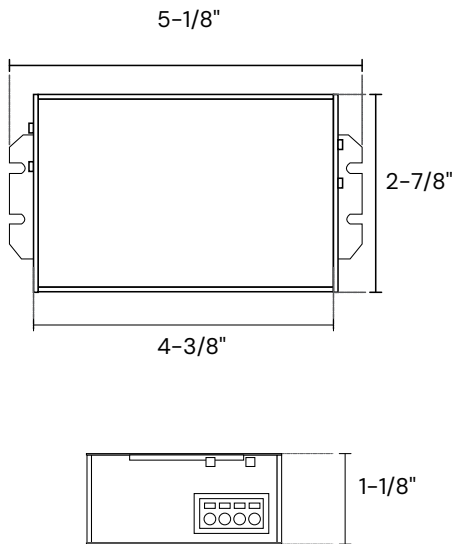
- **Environment:** Damp / Dry location approved
- **Ambient Temperature:** -4°F to 122°F (-20°C to 50°C)
- **Maximum Case Temperature:** 194°F (90°C)



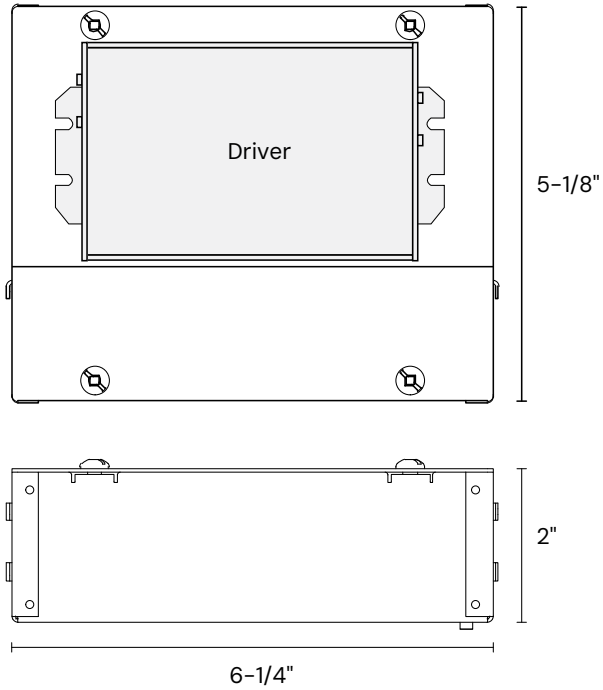
READ ALL INSTRUCTIONS BEFORE INSTALLATION. IMPROPER INSTALLATION MAY RESULT IN ELECTRIC SHOCK, SERIOUS INJURY, OR DEATH. FOLLOW ALL APPLICABLE ELECTRICAL CODES FOR YOUR SAFETY.

LINE DRAWINGS & WIRING

Driver

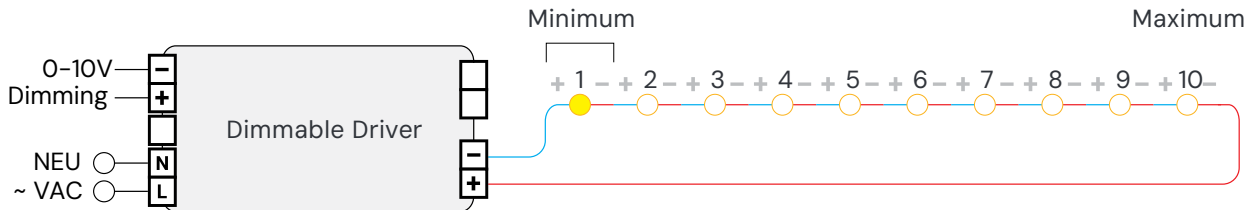


Driver with Enclosure



Wiring Diagram | 2W

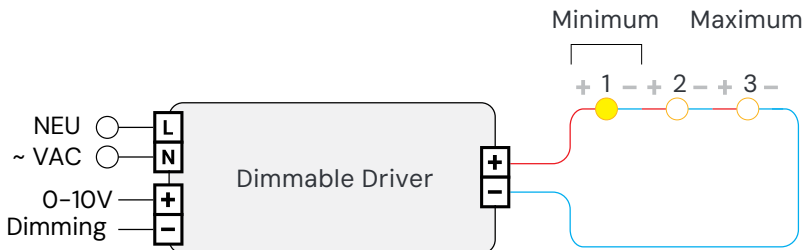
Dimming | For use with 1-10 x 2W LED lighting fixtures (700mA), wired in series



● 700mA LED Lighting Fixture

Wiring Diagram | 8W

Dimming | For use with 1-3 x 8W LED lighting fixtures (700mA), wired in series



● 700mA LED Lighting Fixture