

Project Name: _____ Type: _____ Quantity: _____

INTENDED USE

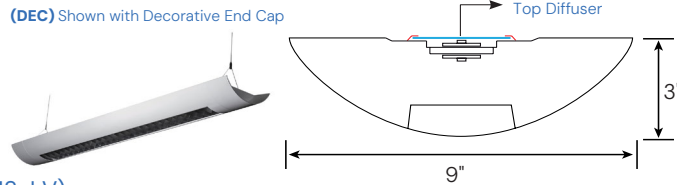
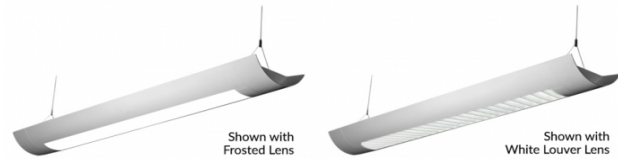
The Casablanca Architectural LED Linear Pendant Lighting Direct/Indirect Light Fixture delivers continuous clean lines and clear light to commercial, hospitality and residential interior lighting applications. Our modern, slim profiles and stylish linear chandelier designs offer excellent direct and indirect lighting and exceptional performance and versatility in offices, classrooms, conference rooms, museums, retail outlets, hotels, restaurants, and more. The integrated LED is available in standard lengths of 4', 8', and 12', and can be joined together in seamless runs of any length.

FEATURES

- Construction:** Die-formed 20 gauge cold-rolled steel (flat end steel plate standard die-cast aluminum decorative end cap optional).
- Continuous Row:** Full ability to tandem-mount for continuous run application, equipped with male & female quick connect harnesses.
- Light Distribution:** 40% Down / 60% Up
- Reflector:** Die-formed, high-reflective
- Lens:** Available in semi-Specular aluminum louver, white louver, white perforated louver & frosted lens.
- Electrical:** Constant current, Class 2
- Voltage:** 120-277V (347V and 480V available for Canadian projects).
- CRI:** 80+ (90+ available)
- Power Factor:** > .9
- Life:** 60,000 hours L70
- Operating Temperature:** -22°F (-30°C) - 122°F (50°C)
- Emergency Lumens:** System Lumens x Emergency Wattage/System Wattage
- Warranty:** 5 Years Carefree for Parts & Components (Labor Not Included), 10 Year Option Available.
- Listings:** UL Listed for Dry & Damp Location.



Lens Types



Ordering code example: (12125-2-30-30K-8-WH-AC4-010-SSA-EM8-LV)

Model	Length Wattage Lumens	Color Temp	CRI	Finish	Pendant Mounting	Dimming	Lens Type	Options	Optional Controls
12125	2-30 2FT 30W 2890 lms	27K¹ 2700K	8 Standard 80+ CRI	WH Standard White	AC4 4' Adjustable Aircraft Cable	O10 Standard 0-10V 1%	SSLV Semi-Specular Aluminum Louver	Blank No Options	Blank No Controls
	2-36 2FT 36W 3426 lms	30K 3000K	9 90+ CRI	BK Black	AC8 8' Adjustable Aircraft Cable	TRI TRIAC (120V)	WL White Louver	EM8 8W Emergency Ballast	LV Lutron VIVE™ Wireless
	2-36 2FT 40W 3826 lms	35K 3500K		SL Silver	ACX Specify X in Feet (Max 30')	ELV Electronic Low Voltage	WPL White Perforated Louver	EM15 15W Emergency Ballast	PH Philips EasySense™
	3-45 3FT 45W 4335 lms	40K 4000K		XXXX Specify XXXX: Use RAL # found on Page 2		ES566 eldoLED 0-10V SOLOdrive	FL Frosted Lens	EM20 20W Emergency Ballast	EN Siemens Enlightened™
	3-54 3FT 54W 5139 lms	50K 5000K				BLS Bi-Level Step 40/100%	OP Semi Specular Louver with White Acrylic Overlay	OS Occupancy Sensor w/ Daylight Harvesting	
	3-60 3FT 60W 5739 lms					BLS_{xx} Bi-Level Step _{xx} /100%		DS Daylight Dimming Photo Sensor	
	4-32 4FT 32W 3000 lms					TLS Tri-Level Step 30/70/100%		AB Separate Dimming Control of Uplight and Downlight	
	4-60 4FT 60W 5780 lms					TLS_{xxx} Tri-Level Step _{xxx} /100%		DEC Decorative End Cap 1.5" Width	
	4-72 4FT 72W 6852 lms							ILD Indirect Light Diffuser for Close to Ceiling Applications	
	4-81 4FT 81W 7652 lms								
	8-120 8FT 120W 11560 lms								
	8-144 8FT 144W 13704 lms								
	8-162 8FT 162W 15304 lms								
	12-180 12FT 180W 17340 lms								
	12-216 12FT 216W 20556 lms								
	12-243 12FT 243W 22956 lms								

¹ Only compatible with 90+ CRI



Alcon Lighting 12125 Casablanca Architectural LED Linear Pendant Mount Direct Down Light Fixture

Available Finishes

Standard

	Matte White	RAL #9003
--	-------------	-----------

Set up fee and longer lead time will be applied on non-standard finishes.





Metropolitan

	Black	RAL #9011
	Silver	RAL #9022
	Urban Native	RAL #8025
	Military Green	RAL #6011
	Carmin	RAL #8028
	Chocolate Spice	RAL #8017
	Asher Grey	RAL #7004
	Tech Grey	RAL #7016
	Slate	RAL #7031
	Mason	RAL #7039

Vibrant

	Violet Dreams	RAL #4006
	Sangria Sunset	RAL #2004
	Deep Pink	RAL #4010
	Ruby Red	RAL #3027
	Island Skye	RAL #6027
	Sophia	RAL #5015
	Antique Spring	RAL #6019
	Daisy	RAL #1018
	Gun Metal	RAL #7024

Controls

Smart Sensors	Protocol	Compatible Networks	Occupancy	Daylight	Temperature Reporting	Communication to Luminaire
	Enlighted RF	Enlighted RF	Integrated	Integrated	Yes	Wireless
	EcoSystem	Quantum, Energi Savr Node, Energi TriPak	Enabled	Enabled	No	Wired
	Lutron Clear Connect®	Lutron Vive System Network	Enabled	Enabled	No	Wireless
	ZigBee HA	Philips	Enabled	Enabled	No	Wired

Controls



Controls Installed on the Fixture



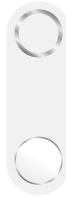
FCJS-010
Individual
Fixture Control

Fixture Will be Shipped LUTRON VIVE Enabled with LUTRON FCJS-010 0-10V Control Module Installed on the Fixture. Fixtures will be compatible with Lutron FC-SENSOR Occupancy/Daylight Sensor or FC-VSENSOR Vacancy/Daylight Sensor which can be Added in the Field for Remote Mounting. Fixture May be Controlled with any Vive control systems. Fixtures must be ordered with a 0-10V. Driver.

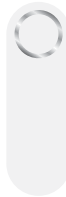


FCJS-ECO
Individual
Fixture Control

Fixture Will be Shipped LUTRON VIVE Enabled with LUTRON FCJS-ECO EcoSystem Control Module Control Module Installed on the Fixture. Fixtures will be compatible with Lutron FC-SENSOR Occupancy/Daylight Sensor or FC-VSENSOR Vacancy/Daylight Sensor which can be Added in the Field for Remote Mounting. Fixture May be Controlled with any Vive control systems. Fixtures must be ordered with a Lutron Driver.



DFCSJ-OEM-OCC
Fixture Will be Shipped LUTRON VIVE Enabled with DFCSJ-OEM-OCC* Vive Integral Fixture Control (with Sensing) Installed on the Fixture. Fixture May be Controlled with any Vive control systems. Fixtures must be ordered with a DMX or Lutron EcoSystem Driver



DFCSJ-OEM-RF
Fixture Will be Shipped LUTRON VIVE Enabled with LUTRON DFCSJ-OEM-RF* Vive Integral Fixture Control (RF Only) Installed on the Fixture. Fixture May be Controlled with any Vive control systems. Fixtures must be ordered with a DMX or Lutron EcoSystem Driver.

Controls Provided by Lutron



Vive Wireless Hub

DayLight
Sensor

Ceiling Mount
Occupancy/
Daylight Sensor

Ceiling Mount
Occupancy Sensor

Pico
Remote

Wall Mount
Switch

Wall Mount
Occupancy Sensor

Lutron App



Fixture will be shipped with Leviton ZLO27-NOW power control module installed on the fixture. Fixtures will be compatible with Leviton ZLO0J-DOW sensor control module which can be added in the field for remote mounting. Fixture will be controlled with Leviton Intellect Keypad Room Controller, or Leviton Neuron App.



ZLO27-NOW
Power control module



ZLO0J-DOW
Sensor control module

Leviton Keypad



ZLDNK-1W

ZLDNK-2W

ZLDNK-4W

ZLDNK-8W

Intellect™ Keypad Room
Controller (Required)

Leviton App



Neuron App

Controls



Philips EasySense sensors provide luminaire-level control with Occupancy sensing, Daylight harvesting, and Field task tuning.

Controls Installed on the Fixture



PHILIPS-XSR + SNS200

Fixture will be Shipped with EasySense SNS200 Sensor installed and PHILIPS-XSR driver. Fixture May Only be Controlled with Philips Field App or Wireless Switches.

SRB + SNS200

Fixture Will be Shipped with EasySense SNS200 Sensor installed and PHILIPS SRB Bridge. Fixture May Only be Controlled with Philips Field App or Wireless Switches or any 0-10V. Wall Box Dimmer.

Controls Provided by Philips

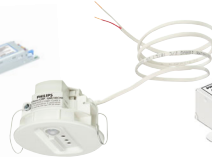


ZBT-S1AWH



ZBT-S2AWH

Illumra Wireless Switches



PHILIPS-XSR + SNS200-CMP

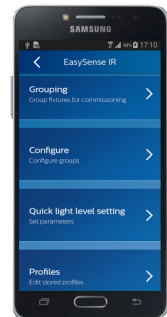
Fixture will be Shipped Sensor Ready with PHILIPS-XSR driver and EasySense SNS200-CMP Sensor which is Included to be Remote Mounted. Fixture May Only be Controlled with Philips Field App or Wireless Switches

SRB + SNS200-CMP

Fixture Will be Shipped Sensor Ready with PHILIPS SRB Bridge and EasySense SNS200-CMP Sensor which is Included to be Remote Mounted. Fixture May Only be Controlled with Philips Field App or Wireless Switches or any 0-10V. Wall Box Dimmer.



SRB

Fixture will be Shipped Sensor Ready with SRB Bridge . Fixture will be Compatible with EasySense Sensor SNS200-CMP which can be Added in the Field for Remote Mounting. Fixture May Only be Controlled with Philips Field App or Wireless Switches or any 0-10V. Wall Box Dimmer.



Philips Field App

Compatible Dimmers

MFG	Triac	ELV	0-10
	TG-600P	DVELV-303P	NTSTV
	LG-600P	SELV-300P	NFTV
	TGCL-153P	MAELV-600	DVSTV
	DV-600P	FAELV-500	
	DVCL-153P		
	S-603PG		
	CT-103P		
S-600P			
	6161	IPEO4	IP710-DLZ
	6633-P	VPEO6-1LZ	
	6683		
	6631-2		
	IPIO6-1LZ		

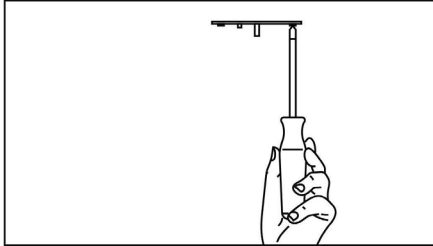
COLOR TEMPERATURE GUIDE



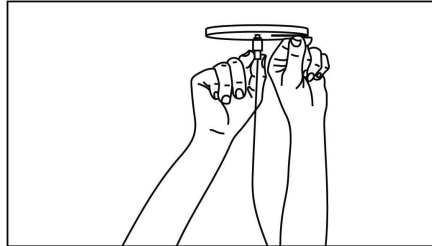
2700K	3000K	3500K	4000K	5000K
WARM WHITE	SOFT WHITE GLOW	NEUTRAL GLOW	DAYLIGHT GLOW	CRYSTAL WHITE GLOW
friendly personal intimate	soft warm pleasing	sociable inviting non-threatening	neat clean efficient	bright cool alert
HOMES LIBRARIES RESTAURANTS	HOMES HOTEL ROOMS LOBBIES RETAIL STORES	EXECUTIVE OFFICES RECEPTION AREAS SUPERMARKETS	OFFICES CLASSROOMS MASS MERCHANDISERS SHOWROOMS	GRAPHICS INDUSTRY HOSPITALS GALLERIES BEAUTY SALONS
✓	✓	✓	✓	✓

Pendant Installation

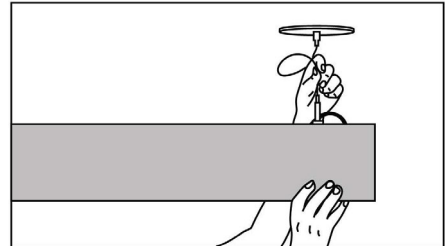
A simple design and adjustable components provide a flexible and hassle-free experience when installing the Continuum Series™.



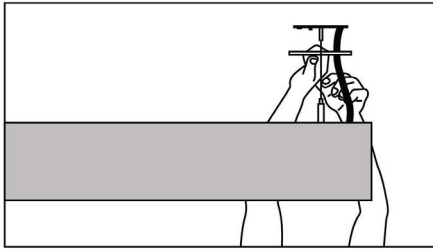
Step 1: Secure cross brackets to junction boxes for both power and non power mounting points.



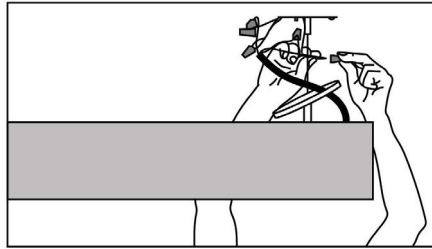
Step 2: Secure canopy with power canopy coupler (Power Feed Mount) & secure canopy with cable terminal (Non Power Feed Mount).



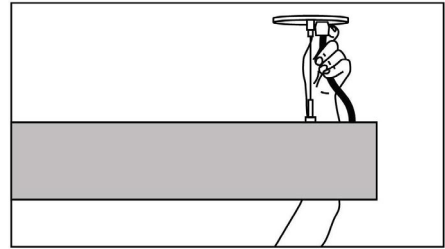
Step 3: Feed aircraft cable into cable grippers, adjust height and level luminaire.



Step 4: Unscrew outer coupler to allow access to junction box. Feed power cord through canopy.



Step 5: Secure canopy back in place with outer coupler.



Step 6: Snap strain relief around power cord. Press into canopy.