

Project Name: \_\_\_\_\_ Type: \_\_\_\_\_ Quantity: \_\_\_\_\_

### INTENDED USE

The Casablanca Architectural LED Linear Pendant Lighting Direct/Indirect Light Fixture delivers continuous clean lines and clear light to commercial, hospitality and residential interior lighting applications. Our modern, slim profiles and stylish linear chandelier designs offer excellent direct and indirect lighting and exceptional performance and versatility in offices, classrooms, conference rooms, museums, retail outlets, hotels, restaurants, and more. The integrated LED is available in standard lengths of 4', 8', and 12', and can be joined together in seamless runs of any length.

### FEATURES

**Construction:** Die-formed 20 gauge cold-rolled steel (flat end steel plate standard die-cast aluminum decorative end cap optional).

**Continuous Row:** Full ability to tandem-mount for continuous run application, equipped with male & female quick connect harnesses.

**Light Distribution:** 40% Down / 60% Up

**Reflector:** Die-formed, high-reflective

**Lens:** Available in semi-Specular aluminum louver, white louver, white perforated louver & frosted lens.

**Electrical:** Constant current, Class 2

**Voltage:** 120-277V (347V and 480V available for Canadian projects).

**CRI:** 80+ (90+ available)

**Power Factor:** > .9

**Life:** 60,000 hours L70

**Operating Temperature:** -22°F (-30°C) - 122°F (50°C)

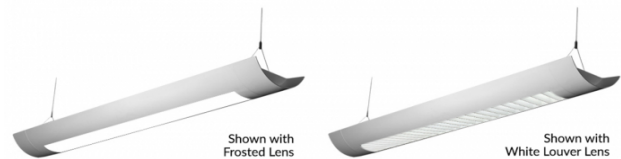
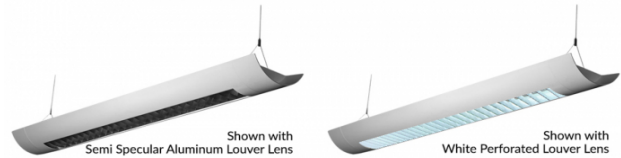
**Emergency Lumens:** System Lumens x Emergency Wattage/System Wattage

**Warranty:** 5 Years Carefree for Parts & Components (Labor Not Included), 10 Year Option Available.

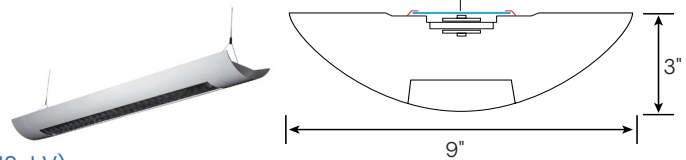
**Listings:** UL Listed for Dry & Damp Location.



Lens Types



(DEC) Shown with Decorative End Cap



Ordering code example: [\(12125-2-30-30K-8-WH-AC4-010-SSA-EM8-LV\)](#)

Model	Length   Wattage   Lumens	Color Temp	CRI	Finish	Pendant Mounting	Dimming	Lens Type	Options	Optional Controls
<b>12125</b>	<b>2-30</b> 2FT   30W   2890 lms	<b>27K<sup>1</sup></b> 2700K	<b>8</b> <small>Standard</small> 80+ CRI	<b>WH</b> <small>Standard</small> White	<b>AC4</b> 4' Adjustable Aircraft Cable	<b>010</b> <small>Standard</small> 0-10V 1%	<b>SSA</b> Semi-Specular Aluminum Louver	<b>Blank</b> No Options	<b>Blank</b> No Controls
	<b>2-36</b> 2FT   36W   3426 lms	<b>30K</b> 3000K	<b>9</b> 90+ CRI	<b>BK</b> Black	<b>AC8</b> 8' Adjustable Aircraft Cable	<b>TRI</b> TRIAC (120V)	<b>WL</b> White Louver	<b>EM8</b> 8W Emergency Ballast	<b>LV</b> Lutron VIVE™ Wireless
	<b>2-36</b> 2FT   40W   3826 lms	<b>35K</b> 3500K		<b>SL</b> Silver	<b>ACX</b> Specify X in Feet (Max 30')	<b>ELV</b> Electronic Low Voltage	<b>WPL</b> White Perforated Louver	<b>EM15</b> 15W Emergency Ballast	<b>PH</b> Philips EasySense™
	<b>3-45</b> 3FT   45W   4335 lms	<b>40K</b> 4000K		<b>XXXX</b> Specify XXXX: Use RAL # found on Page 2		<b>ES566</b> elddLED 0-10V SOLOdrive	<b>FL</b> Frosted Lens	<b>EM20</b> 20W Emergency Ballast	<b>EN</b> Siemens Enlightened™
	<b>3-54</b> 3FT   54W   5139 lms	<b>50K</b> 5000K				<b>BLS</b> Bi-Level Step 40/100%	<b>OP</b> Semi Specular Louver with White Acrylic Overlay	<b>OS</b> Occupancy Sensor w/ Daylight Harvesting	
	<b>3-60</b> 3FT   60W   5739 lms					<b>BLSxx</b> Bi-Level Step xx/100%		<b>DS</b> Daylight Dimming Photo Sensor	
	<b>4-32</b> 4FT   32W   3000 lms					<b>TLS</b> Tri-Level Step 30/70/100%		<b>AB</b> Separate Dimming Control of Uplight and Downlight	
	<b>4-60</b> 4FT   60W   5780 lms					<b>TLSxxx</b> Tri-Level Step xxx/zz/100%		<b>DEC</b> Decorative End Cap 1.5" Width	
	<b>4-72</b> 4FT   72W   6852 lms							<b>ILD</b> Indirect Light Diffuser for Close to Ceiling Applications	
	<b>4-81</b> 4FT   81W   7652 lms								
	<b>8-120</b> 8FT   120W   11560 lms								
	<b>8-144</b> 8FT   144W   13704 lms								
	<b>8-162</b> 8FT   162W   15304 lms								
	<b>12-180</b> 12FT   180W   17340 lms								
	<b>12-216</b> 12FT   216W   20556 lms								
	<b>12-243</b> 12FT   243W   22956 lms								

<sup>1</sup> Only compatible with 90+ CRI



Available Finishes

Standard

	Matte White	RAL #9003
--	-------------	-----------

Set up fee and longer lead time will be applied on non-standard finishes.





Metropolitan

	Black	RAL #9011
	Silver	RAL #9022
	Urban Native	RAL #8025
	Military Green	RAL #6011
	Carmin	RAL #8028
	Chocolate Spice	RAL #8017
	Asher Grey	RAL #7004
	Tech Grey	RAL #7016
	Slate	RAL #7031
	Mason	RAL #7039

Vibrant

	Violet Dreams	RAL #4006
	Sangria Sunset	RAL #2004
	Deep Pink	RAL #4010
	Ruby Red	RAL #3027
	Island Skye	RAL #6027
	Sophia	RAL #5015
	Antique Spring	RAL #6019
	Daisy	RAL #1018
	Gun Metal	RAL #7024

Controls

Smart Sensors	Protocol	Compatible Networks	Occupancy	Daylight	Temperature Reporting	Communication to Luminaire
	Enlighted RF	Enlighted RF	Integrated	Integrated	Yes	Wireless
	EcoSystem	Quantum, Energi Savr Node, Energi TriPak	Enabled	Enabled	No	Wired
	Lutron Clear Connect®	Lutron Vive System Network	Enabled	Enabled	No	Wireless
	ZigBee HA	Philips	Enabled	Enabled	No	Wired

## Controls



### Controls Installed on the Fixture



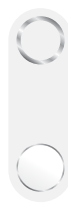
**FCJS-010**  
Individual  
Fixture Control

Fixture Will be Shipped LUTRON VIVE Enabled with LUTRON FCJS-010 0-10V Control Module Installed on the Fixture. Fixtures will be compatible with Lutron FC-SENSOR Occupancy/Daylight Sensor or FC-VSENSOR Vacancy/Daylight Sensor which can be Added in the Field for Remote Mounting. Fixture May be Controlled with any Vive control systems. Fixtures must be ordered with a 0-10V. Driver.



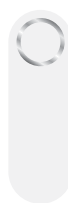
**FCJS-ECO**  
Individual  
Fixture Control

Fixture Will be Shipped LUTRON VIVE Enabled with LUTRON FCJS-ECO EcoSystem Control Module Installed on the Fixture. Fixtures will be compatible with Lutron FC- SENSOR Occupancy/Daylight Sensor or FC-VSENSOR Vacancy/Daylight Sensor which can be Added in the Field for Remote Mounting. Fixture May be Controlled with any Vive control systems. Fixtures must be ordered with a Lutron Driver.



### DFCSJ-OEM-OCC

Fixture Will be Shipped LUTRON VIVE Enabled with DFCSJ-OEM-OCC\* Vive Integral Fixture Control (with Sensing) Installed on the Fixture. Fixture May be Controlled with any Vive control systems. Fixtures must be ordered with a DMX or Lutron EcoSystem Driver



### DFCSJ-OEM-RF

Fixture Will be Shipped LUTRON VIVE Enabled with LUTRON DFCSJ-OEM-RF\* Vive Integral Fixture Control (RF Only) Installed on the Fixture. Fixture May be Controlled with any Vive control systems. Fixtures must be ordered with a DMX or Lutron EcoSystem Driver.

### Controls Provided by Lutron



Vive Wireless Hub



DayLight  
Sensor



Ceiling Mount  
Occupancy/  
Daylight Sensor



Ceiling Mount  
Occupancy Sensor



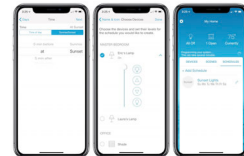
Pico  
Remote



Wall Mount  
Switch



Wall Mount  
Occupancy Sensor



Lutron App



Fixture will be shipped with Leviton ZLO27-NOW power control module installed on the fixture. Fixtures will be compatible with Leviton ZLO0J-DOW sensor control module which can be added in the field for remote mounting. Fixture must be controlled with Leviton Intellect Keypad Room Controller, or Leviton Neuron App.



**ZLO27-NOW**  
Power control module



**ZLO0J-DOW**  
Sensor control module

### Leviton Keypad



**ZLDNK-1W**



**ZLDNK-2W**



**ZLDNK-4W**



**ZLDNK-8W**

Intellect™ Keypad Room  
Controller (Required)

### Leviton App



Neuron App

## Controls



Philips EasySense sensors provide luminaire-level control with Occupancy sensing, Daylight harvesting, and Field task tuning.

### Controls Installed on the Fixture



#### PHILIPS-XSR + SNS200

Fixture will be Shipped with EasySense SNS200 Sensor installed and PHILIPS-XSR driver. Fixture May Only be Controlled with Philips Field App or Wireless Switches.



#### SRB + SNS200

Fixture Will be Shipped with EasySense SNS200 Sensor installed and PHILIPS SRB Bridge. Fixture May Only be Controlled with Philips Field App or Wireless Switches or any 0-10V. Wall Box Dimmer.



### Controls Provided by Philips

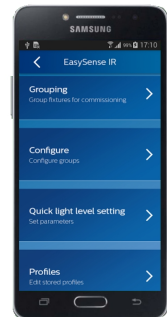


ZBT-S1AWH



ZBT-S2AWH

Illumra Wireless Switches



Philips Field App



#### PHILIPS-XSR + SNS200-CMP

Fixture will be Shipped Sensor Ready with PHILIPS-XSR driver and EasySense SNS200-CMP Sensor which is Included to be Remote Mounted. Fixture May Only be Controlled with Philips Field App or Wireless Switches



#### SRB + SNS200-CMP



Fixture Will be Shipped Sensor Ready with PHILIPS SRB Bridge and EasySense SNS200-CMP Sensor which is Included to be Remote Mounted. Fixture May Only be Controlled with Philips Field App or Wireless Switches or any 0-10V. Wall Box Dimmer.



#### SRB

Fixture will be Shipped Sensor Ready with SRB Bridge . Fixture will be Compatible with EasySense Sensor SNS200-CMP which can be Added in the Field for Remote Mounting. Fixture May Only be Controlled with Philips Field App or Wireless Switches or any 0-10V. Wall Box Dimmer.

Compatible Dimmers

MFG	Triac	ELV	0-10
	TG-600P LG-600P TGCL-153P DV-600P DVCL-153P S-603PG CT-103P S-600P	DVELV-303P SELV-300P MAELV-600 FAELV-500	NTSTV NFTV DVSTV
		6161 6633-P 6683 6631-2 IPIO6-1LZ	IPEO4 VPEO6-1LZ IP710-DLZ

COLOR TEMPERATURE GUIDE



**2700K**  
WARM  
WHITE

friendly  
personal  
intimate

HOMES  
LIBRARIES  
RESTAURANTS





**3000K**  
SOFT WHITE  
GLOW

soft  
warm  
pleasing

HOMES  
HOTEL ROOMS  
LOBBIES  
RETAIL STORES





**3500K**  
NEUTRAL  
GLOW

sociable  
inviting  
non-threatening

EXECUTIVE OFFICES  
RECEPTION AREAS  
SUPERMARKETS





**4000K**  
DAYLIGHT  
GLOW

neat  
clean  
efficient

OFFICES  
CLASSROOMS  
MASS MERCHANDISERS  
SHOWROOMS





**5000K**  
CRYSTAL WHITE  
GLOW

bright  
cool  
alert

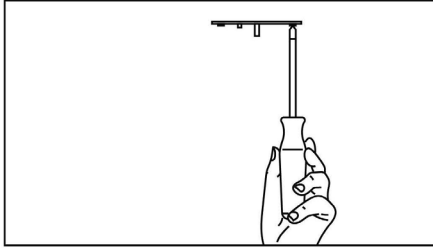
GRAPHICS INDUSTRY  
HOSPITALS  
GALLERIES  
BEAUTY SALONS



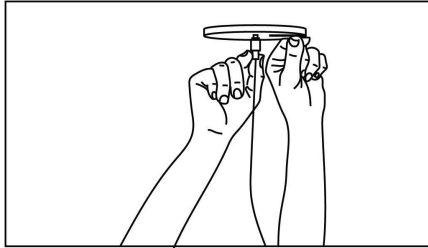


## Pendant Installation

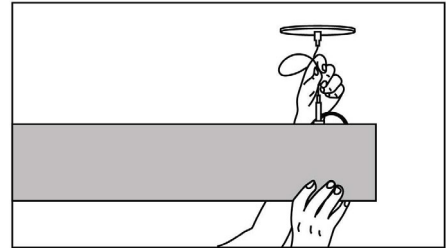
A simple design and adjustable components provide a flexible and hassle-free experience when installing the Continuum Series™.



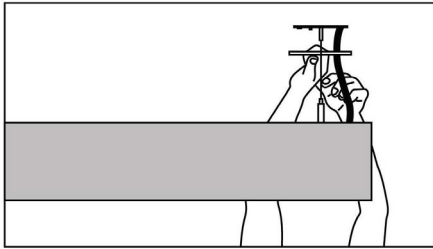
**Step 1:** Secure cross brackets to junction boxes for both power and non power mounting points.



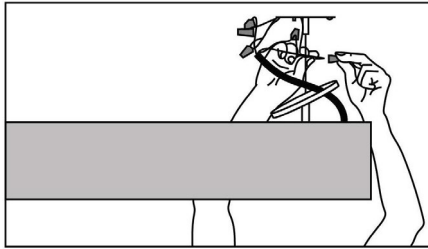
**Step 2:** Secure canopy with power canopy coupler (Power Feed Mount) & secure canopy with cable terminal (Non Power Feed Mount).



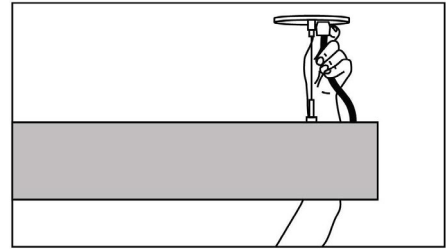
**Step 3:** Feed aircraft cable into cable grippers, adjust height and level luminaire.



**Step 4:** Unscrew outer coupler to allow access to junction box. Feed power cord through canopy.



**Step 5:** Secure canopy back in place with outer coupler.



**Step 6:** Snap strain relief around power cord. Press into canopy.