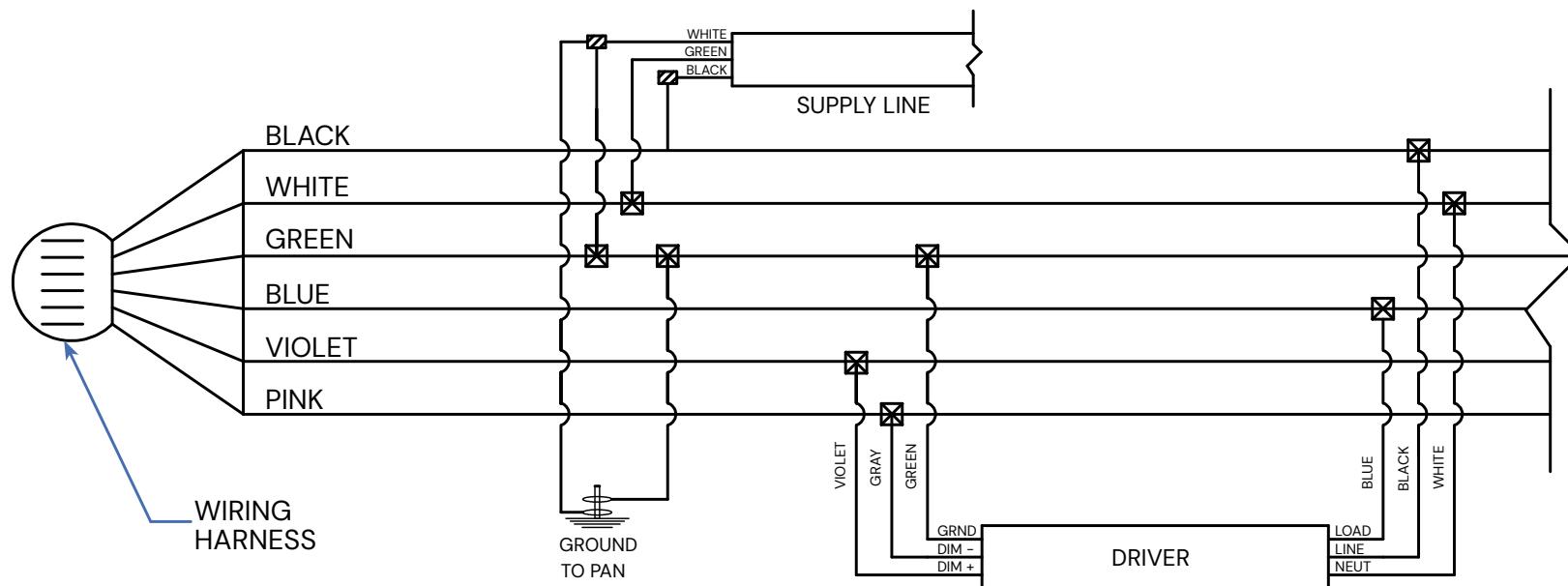


## IMPORTANT SAFEGUARDS

- ## GENERAL ACCESS INSTRUCTIONS

- ## WIRING DIAGRAM



## 12100-66-R INSTALLATION INSTRUCTIONS

### COVER SUPPORTED

#### Step 1

Locate the adjustable mounting bracket on the top side of the luminaire—one bracket per side.

#### Step 2

Adjust both brackets to the same height, then use the included thumb screws to secure them to the housing.

#### Step 3

Attach the cover to the mounting plate using a female coupler. If the cover includes a power supply, feed the wiring through the designated opening.

### CONTINUOUS RUN

#### Step 1

For continuous-run configurations, a junction plate/light trap is included for each connection.

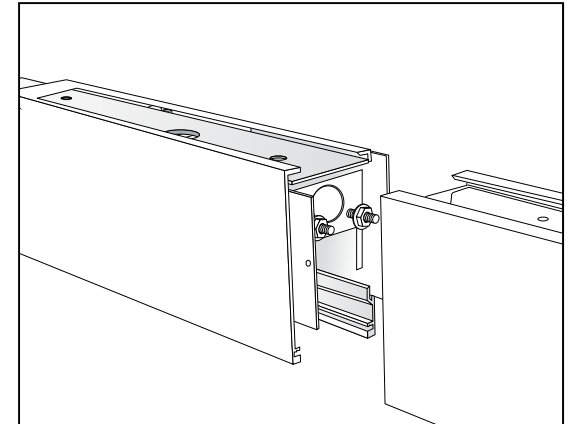
#### Step 2

Align fixtures and connect them internally using the provided hardware:

- (2) 8-32 x 1/2" Phillips head bolts with star washer nuts
- Top joining plates with (4) #8 self-tapping screws
- Light leakage plates

#### Step 3

Use the top junction plate and included fasteners (2) to securely connect the fixtures at each joint.



**WARNING:** Important: This product must be installed in accordance with applicable electrical codes by a qualified professional familiar with its construction, operation, and associated safety hazards. Follow all safety guidelines during installation. Retain these instructions for future reference.

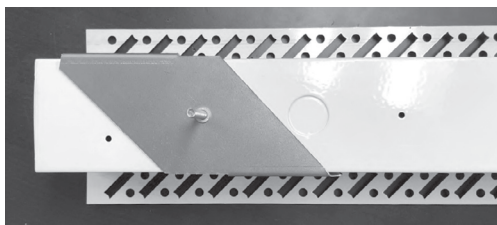
## 12100-66-R INSTALLATION INSTRUCTIONS

### MOUNTING INSTRUCTIONS

#### Step 1

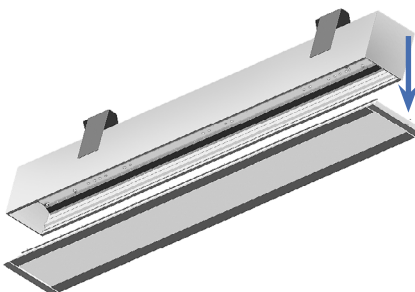
Place the provided bracket on top of the fixture and lift it into the ceiling cutout (consult factory for dimensions).

**Note:** For wet location-rated fixtures, install the waterproof O-ring to ensure a sealed fit.



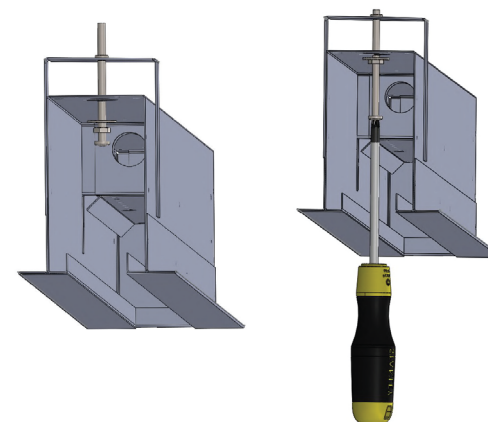
#### Step 2

Remove the door frame to access the internal adjustment bolt.



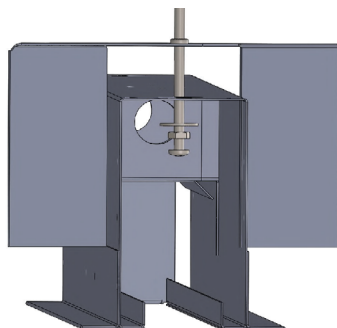
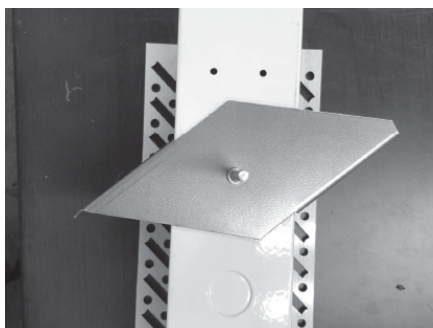
#### Step 3

From inside the fixture, tighten the bracket screw to secure it to the ceiling. Adjust the nut to set bracket height.



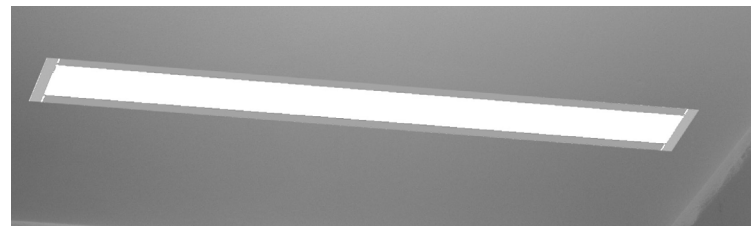
#### Step 4

Complete the final turn of the screw to lock the fixture into place.



#### Step 5

Reinstall the door frame. Tighten screws by hand or use the lowest power tool setting to avoid damage.



**WARNING:** Important: This product must be installed in accordance with applicable electrical codes by a qualified professional familiar with its construction, operation, and associated safety hazards. Follow all safety guidelines during installation. Retain these instructions for future reference.

## 12100-66-R INSTALLATION INSTRUCTIONS

### WALL-TO-CEILING INSTALLATION

#### Step 1

When specified for wall-to-ceiling runs, a connection plate is provided.

#### Step 2

Use two fasteners to secure the recessed wall fixture to the recessed ceiling fixture.

#### Step 3

Continue installation using standard mounting bracket procedures.

