

Project Name: _____ Type: _____ Quantity: _____

INTENDED USE

This 4-foot architectural LED linear adjustable light is ideal for commercial and residential applications, including convention centers, offices, lobbies, showrooms, and hotels. It supports seamless continuous runs or standalone installation, featuring a unique end cap for easy setup. Linkable up to 15 units, it includes a 59" aircraft adjustable cable for suspension.

FEATURES

Construction: Extruded aluminum housing with powder coat finish
Wattage: 15/25/35/50W selectable switch
Color Temperature: 35/40/50K selectable switch
Light Distribution: 5 various options via selectable switch
Driver: 0-10V dims to 0%
Emergency Battery: Internal 90 min. w/ test switch
Voltage: 120-277V
Operating Temperature: -4°F to 118.4°F (-20°C to 48°C)
CRI: 80+
Life: 50,000 Hours
Warranty: 2 Years carefree for parts & components (Labor not included)
Listings: UL listed, DLC Premium



White Finish



Black Finish

Wattage	Lumens	Efficacy (LPW)
50W	6500 lm	130 lm/W
35W	4550 lm	
25W	3250 lm	
15W	1950 lm	

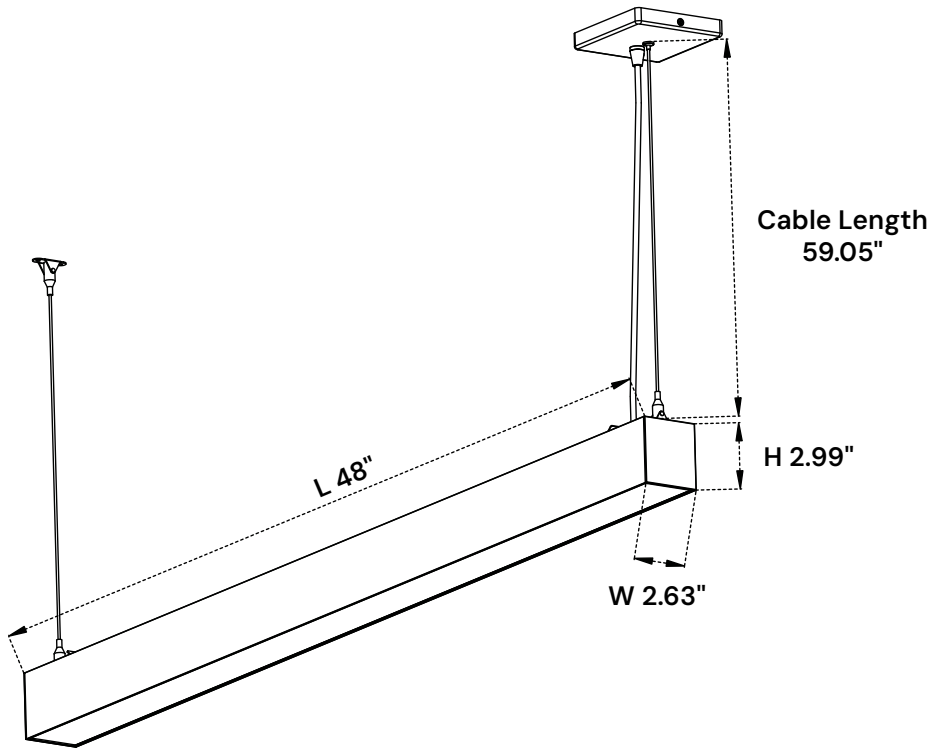


ORDERING INFORMATION Example:

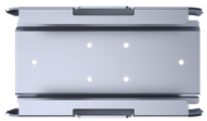
Model	Shape	Finish	Ceiling	Canopy Shape	Options
12100-26	S_x Single Run CR_x Continuous Run X_{xx} Cross T_{xx} "T" Shape L_{xx} "L" Shape	WH White BK Black	S9 Screw Slot Grid 9/16" S15 Screw Slot Grid 15/16" T T-bar Grid 9/16" & 15/16"	R <small>Standard</small> Round S Square	EM8 8W Emergency Battery EM15 15W Emergency Battery EM30 30W Emergency Battery MMS Microwave Motion Sensor CFL ¹ Cutable Flexible Lens

¹ Max length is 50'. Suggested for continuous run shape.

LINE DRAWINGS & DIMENSIONS



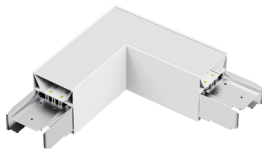
JOINER OPTIONS



Run Joiner



"L" Joiner



"Cross" Joiner



"T" Joiner



Cuttable Flexible Lens

CANOPY SHAPES

Round

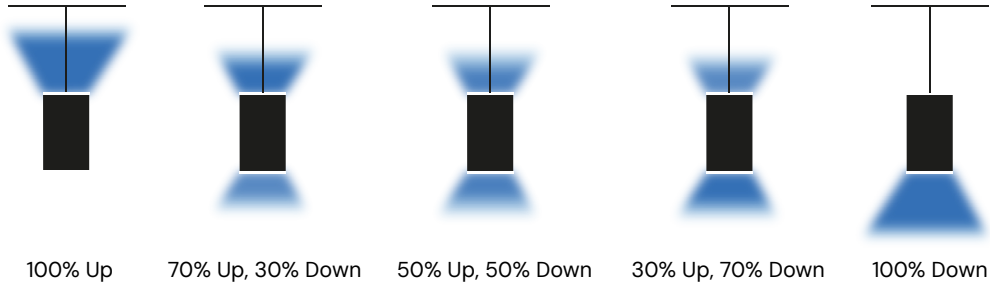


Square

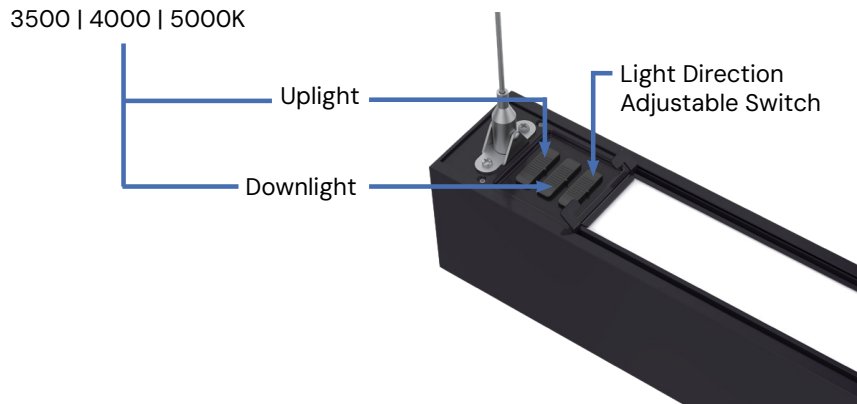


LIGHT DISTRIBUTION

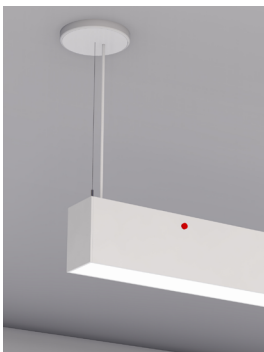
5 different options via DIP switch



Color Temperature Adjustable Switch



EMERGENCY BATTERY WITH TEST SWITCH



UL Listed for the U.S. and Canada, compliant with UL 924 and CSA C22.2 No. 141, this emergency backup unit supports both field and factory installation. Designed for energy efficiency, it meets CEC Title 20 requirements, featuring constant output power, high voltage output, and low energy consumption. The system includes a self-diagnostic function that performs automatic monthly and annual testing per NFPA 101 Life Safety Code standards. It features self-testing, overcharge and over-discharge battery protection, and malfunction indication.

Battery Integration and Operation:

- Connects to the LED driver's DC output.
- Provides constant power during emergency operation.
- Automatically switches to battery power during a power outage.

Test Switch Functionality:

Monthly Test: Every 30 days, while connected to AC power, the system performs a 30-second self-discharge test of the emergency LED driver. After the test, the unit automatically resumes normal charging mode.

Annual Test: Every 365 days, the system conducts a full 90-minute self-discharge test while in AC mode. Once the test is complete, the battery automatically recharges to resume standard operation.



COMPATIBLE DIMMERS

	<div><div>ALCON</div><div>LIGHTING</div></div>
0-10 V	<div>2100</div> <div>2101</div> <div>2102</div>

COLOR TEMPERATURE GUIDE

2700K

WARM WHITE

friendly
personal
intimate

HOMES
LIBRARIES
RESTAURANTS

X

3000K

SOFT WHITE GLOW

soft
warm
pleasing

HOMES
HOTEL ROOMS
LOBBIES
RETAIL STORES

✓

3500K

NEUTRAL GLOW

sociable
inviting
non-threatening

EXECUTIVE OFFICES
RECEPTION AREAS
SUPERMARKETS

✓

4000K

COOL WHITE GLOW

neat
clean
efficient

OFFICES
CLASSROOMS
MASS MERCHANTISERS
SHOWROOMS

✓

5000K

DAYLIGHT GLOW

bright
cool
alert

GRAPHICS INDUSTRY
HOSPITALS
GALLERIES
BEAUTY SALONS

X

AlconLighting.com © 2025 ■ (877) 733-5236 ■ products@alconlighting.com

Pg.4/4