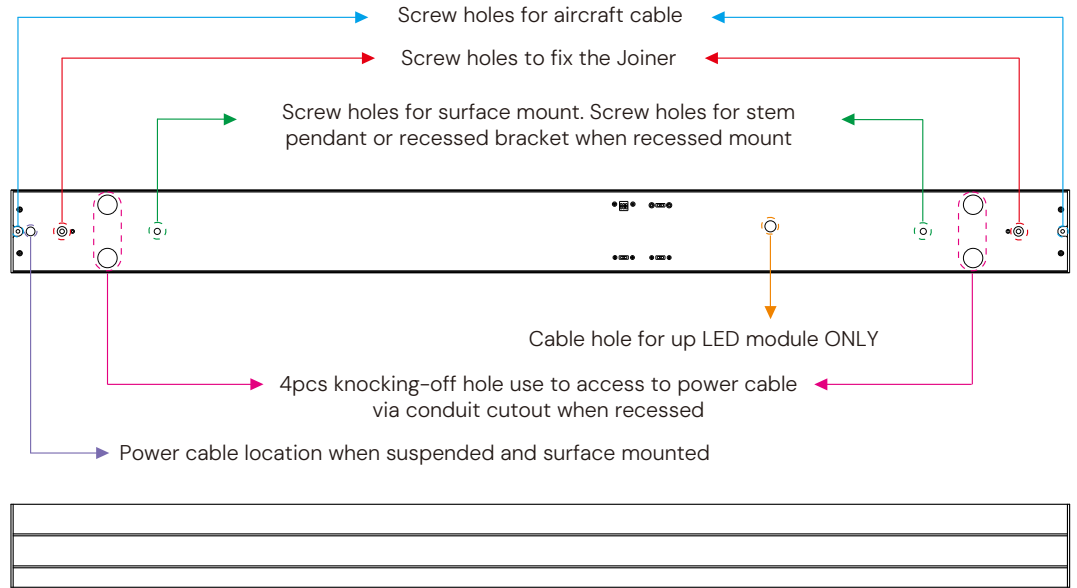
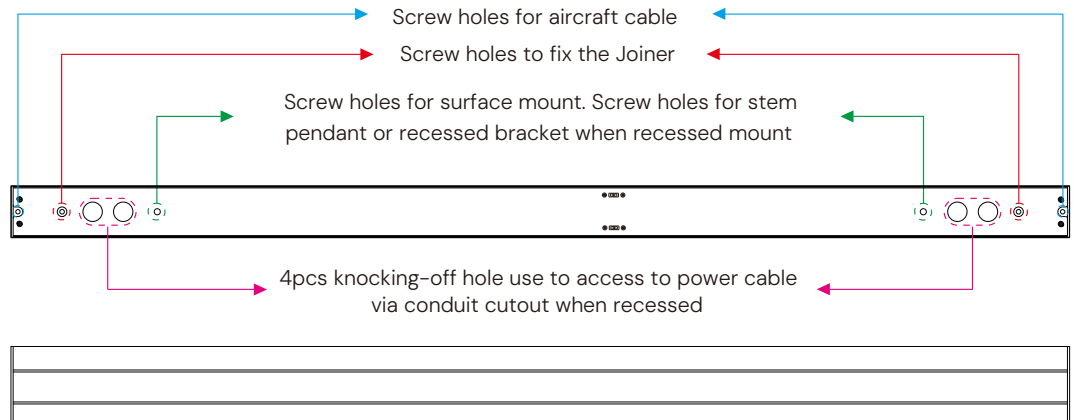


⚠ RISK OF FIRE AND ELECTRICAL SHOCK. FIXTURE MUST BE INSTALLED BY A QUALIFIED ELECTRICIAN ONLY IN ACCORDANCE WITH NATIONAL, LOCAL BUILDING AND ELECTRICAL CODES. DISCONNECT POWER AT ELECTRICAL PANEL BEFORE SERVICING.

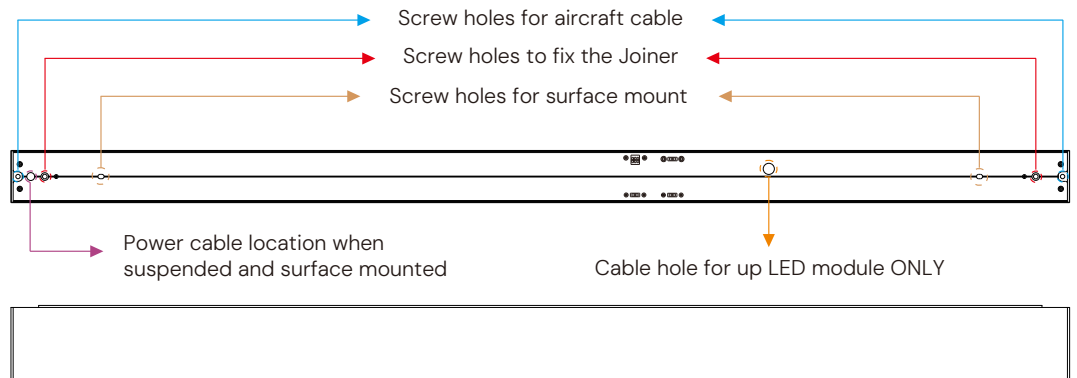
12100-33 Linear



12100-21 Linear



12100-22 Linear

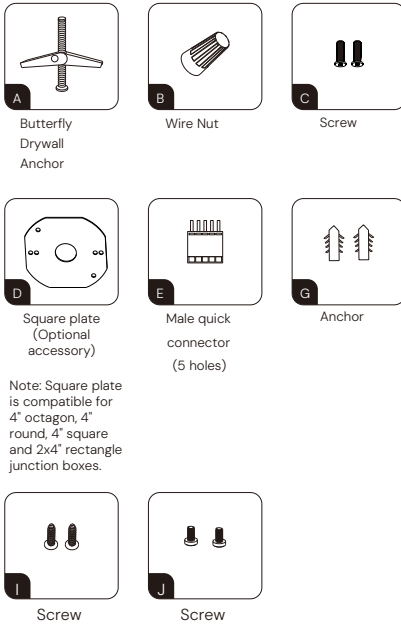


⚠ RISK OF FIRE AND ELECTRICAL SHOCK. FIXTURE MUST BE INSTALLED BY A QUALIFIED ELECTRICIAN ONLY IN ACCORDANCE WITH NATIONAL, LOCAL BUILDING AND ELECTRICAL CODES. DISCONNECT POWER AT ELECTRICAL PANEL BEFORE SERVICING.

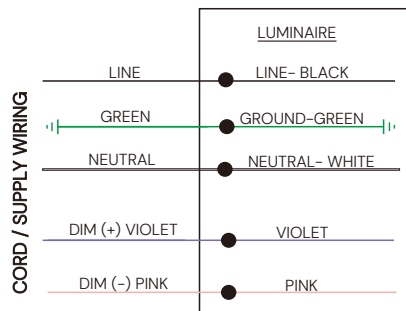
IMPORTANT

1. Read all instructions.
2. Install in accordance with national and local electrical code regulations.
3. This product is intended to be installed and serviced by a qualified, licensed electrician.
4. Do not install in wet locations. For dry and damp use only.
5. Turn off electrical power before installing or servicing fixture in any way.
6. To reduce the risk of fire and overheating, make sure all connections are tight.
7. Under no circumstances can the lighting fixture be covered with heat insulation gasket or similar materials.
8. The maximum connection of each input line is 40FT (1200CM) in 120AC, 80FT (2400CM) in 230AC, and 100FT (3000CM) in 277AC.

ACCESSORY



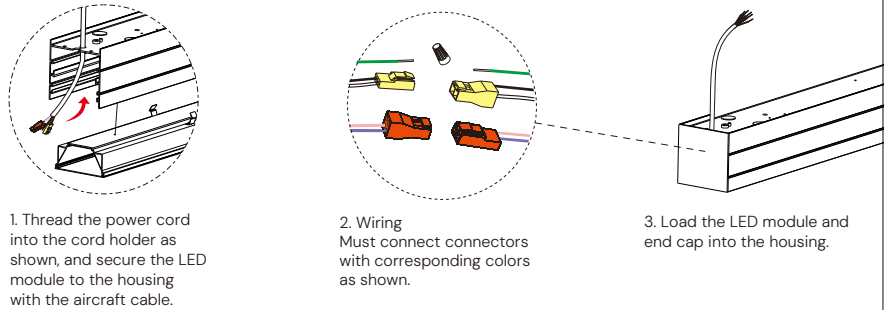
WIRING



⚠ Please isolate two dimming wires by P2 terminal individually if no need dimming; **MUST connect wires with corresponding colors as shown.**

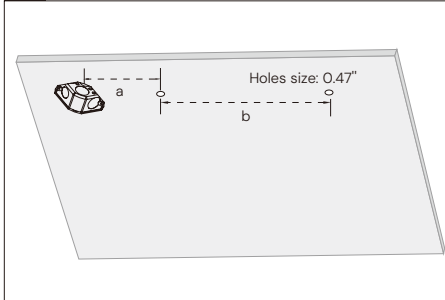
PRE-INSTALLATION

Assemble Luminaire



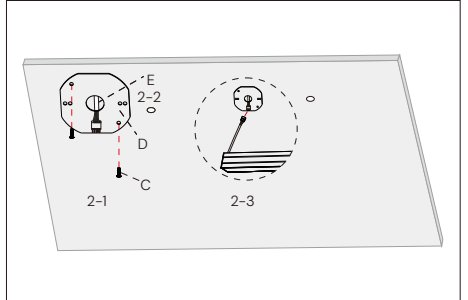
INDEPENDENT INSTALLATION

1 Prepare mounting point in the ceiling



- a) The center distance between the ceiling hole and the junction box.
b) The distance between two ceiling hole.

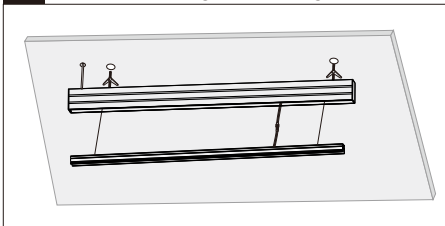
2 Mount plate and wiring



- 2-1: Cover the junction box with square plate "D" and fix it with screw "C", then plaster the area.
2-2: Plug in AC wires, dimming wires and ground wire into the male quick connector (5 holes) "E" according to label instructions.
2-3: Plug in the male and female connector together, hide all wires into the junction box.

	12100-21 -22 -33 Width		12100-21 -22 Width		12100-21 -22 Width	
	12100-21 -22 -33 (Flat and Regressed lens)		12100-21 -22 (Flat and Regressed lens)		12100-21 -22 (Louver lens)	
Nominal Length	"a"	"b"	"a"	"b"	"a"	"b"
	Feet	Feet	Feet	Feet	Feet	Feet
2 ft.	0.48'	0.88'	0.26'	1.30'	0.26'	1.31'
3 ft.	0.48'	1.88'	0.26'	2.30'	0.26'	2.30'
4 ft.	0.48'	2.88'	0.26'	3.30'	0.26'	3.28'
8 ft.	0.48'	6.84'	0.26'	7.26'	0.26'	7.22'

3 Screw the housing in the ceiling

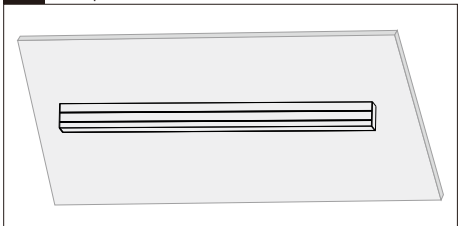


- 3-1: Fix the housing in the ceiling with butterfly drywall anchor "A".

Remark: Fix the housing with screws "I" if wooden frame ceiling. Fix the housing with anchor "G" and Screws "I" if cement drywall.

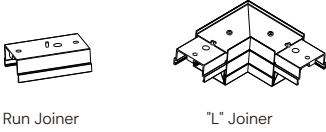
- 3-2: Press the LED module into housing.

4 Complete



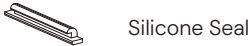
⚠ RISK OF FIRE AND ELECTRICAL SHOCK. FIXTURE MUST BE INSTALLED BY A QUALIFIED ELECTRICIAN ONLY IN ACCORDANCE WITH NATIONAL, LOCAL BUILDING AND ELECTRICAL CODES. DISCONNECT POWER AT ELECTRICAL PANEL BEFORE SERVICING.

JOINER OPTIONS



It needs 2 inputs if using joiner "+" and "Y".

ACCESSORY

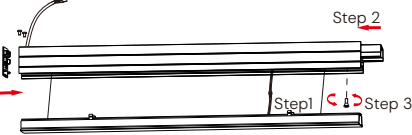


Note: Silicone seal is used to seal seams that may appear at both ends of luminaires when multiple connections.

BEFORE CONNECTING

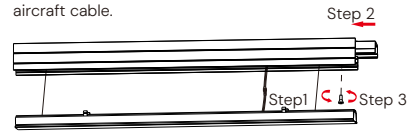
Disassemble Luminaires

LINE CONNECTION



Start of run (SoR):

Install the power feed cable, head end cap and endmost line joiner. Meanwhile, secure the LED module to the housing with aircraft cable.



Middle of run (MoR):

Install the endmost line joiner and secure the LED module to the housing with aircraft cable.



End of run (EoR):

Install the endmost end cap and secure the LED module to the housing with aircraft cable.

L SHAPE CONNECTION



Start of run (SoR):

Install the power feed cable, attach and secure the head end cap. Then attach the LED module to the housing using aircraft cable.

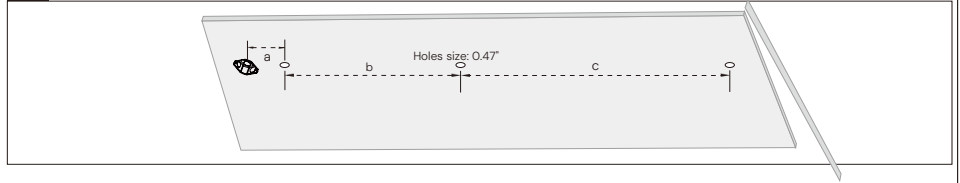


End of run (EoR):

Install the endmost end cap and secure the down module to the housing with aircraft cable.

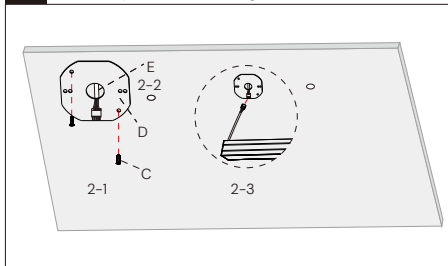
LINE CONNECTION

1 Prepare mounting point in the ceiling



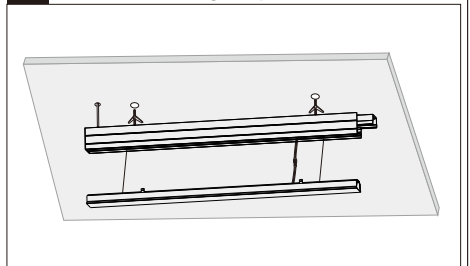
Nominal Length	12100-21 -33 (Flat and Regressed lens)			12100-22 (Flat and Regressed lens)			12100-22 (Louver lens)		
	"a"	"b"	"c"	"a"	"b"	"c"	"a"	"b"	"c"
2 ft.	0.48'	0.88'	1.96'	0.26'	1.30'	1.96'	0.26'	1.31'	1.97'
3 ft.	0.48'	1.88'	2.96'	0.26'	2.30'	2.96'	0.26'	2.30'	2.95'
4 ft.	0.48'	2.88'	3.96'	0.26'	3.30'	3.96'	0.26'	3.28'	3.94'
8 ft.	0.48'	6.84'	7.92'	0.26'	7.26'	7.92'	0.26'	7.22'	7.87'

2 Mount plate and wiring



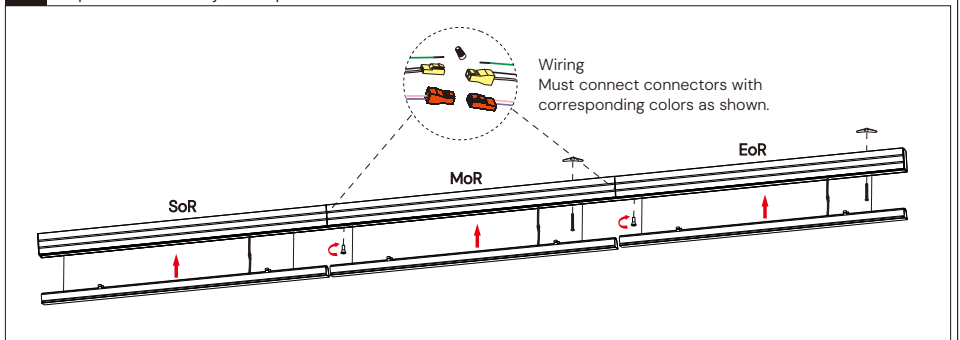
2-1: Cover the junction box with square plate "D" and fix it with screw "C", then plaster the area.
2-2: Plug in AC wires, dimming wires and ground wire into the male quick connector (5 holes) "E" according to label instructions.
2-3: Plug in the male and female connector together and hide all wires into the junction box.

3 Install the housing and joiner – SoR



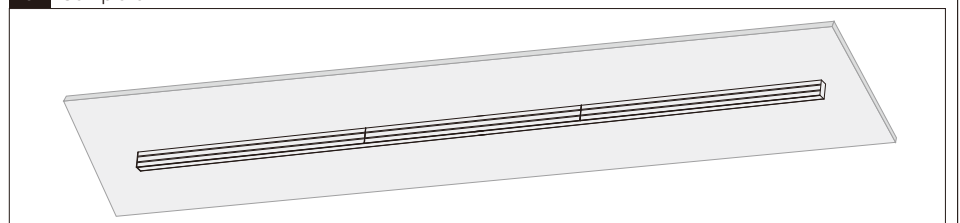
3-1: Fix the housing in the ceiling with butterfly drywall anchor "A".
Remark: Fix the housing with screws "I" if wooden frame ceiling. Fix the housing with Anchor "G" and Screws "I" if cement drywall.

4 Repeat install and join steps-MoR to EoR



4-1: Fix the housing in the ceiling, one section at a time.
4-2: Connect the quick connectors properly.
4-3: Insert all the LED modules into the housing from SoR to EoR in turn.

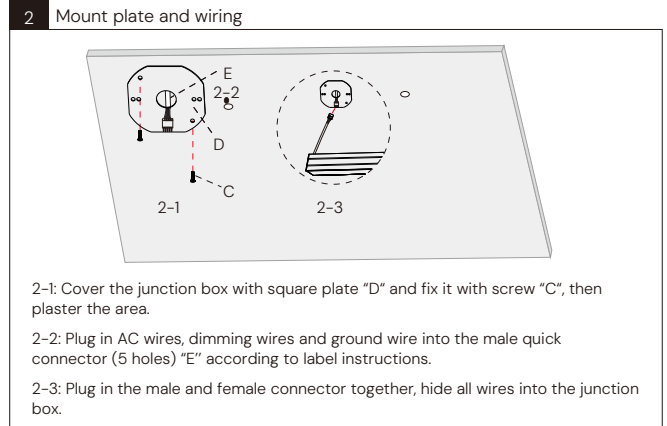
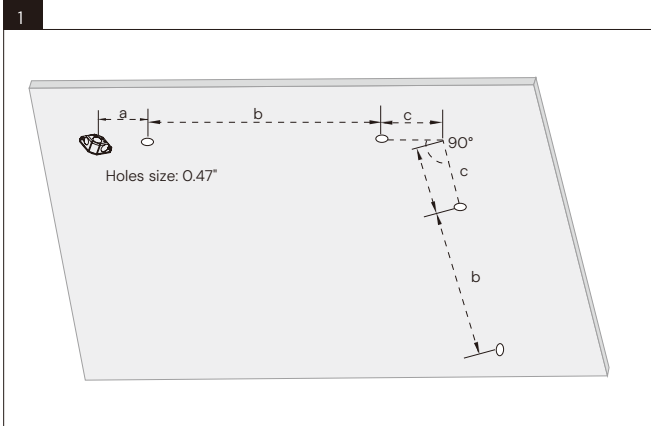
5 Complete



⚠ RISK OF FIRE AND ELECTRICAL SHOCK. FIXTURE MUST BE INSTALLED BY A QUALIFIED ELECTRICIAN ONLY IN ACCORDANCE WITH NATIONAL, LOCAL BUILDING AND ELECTRICAL CODES. DISCONNECT POWER AT ELECTRICAL PANEL BEFORE SERVICING.

L SHAPE CONNECTION

- ▲ For "+" and "Y" shape or other geometric shapes, all subject to the "L" shape installation.
- ▲ It needs 2 inputs if using joiner "+" and "Y".



12100-33 Width 12100-33 (Flat and Regressed lens)				12100-21 Width 12100-21 (Flat and Regressed lens)		
Nominal Length	"a"	"b"	"c" Illuminated "L" Joiner	"a"	"b"	"c" Illuminated "L" Joiner
	Feet	Feet	Feet	Feet	Feet	Feet
2 ft.	0.48'	0.88'	0.39'	0.48'	0.88'	0.33'
3 ft.	0.48'	1.88'	0.39'	0.48'	1.88'	0.33'
4 ft.	0.48'	2.88'	0.39'	0.48'	2.88'	0.33'
8 ft.	0.48'	6.84'	0.39'	0.48'	6.84'	0.33'

12100-22 Width 12100-22 (Flat and Regressed lens)				12100-22 (Louver lens)		
"a"	"b"	"c" Illuminated "L" Joiner	"c" Non-luminous "L" Joiner	"a"	"b"	"c" Non-luminous "L" Joiner
Feet	Feet	Feet	Feet	Feet	Feet	Feet
0.26'	1.30'	0.33'	0.10'	0.26'	1.31'	0.10'
0.26'	2.30'	0.33'	0.10'	0.26'	2.30'	0.10'
0.26'	3.30'	0.33'	0.10'	0.26'	3.28'	0.10'
0.26'	7.26'	0.33'	0.10'	0.26'	7.22'	0.10'

⚠ RISK OF FIRE AND ELECTRICAL SHOCK. FIXTURE MUST BE INSTALLED BY A QUALIFIED ELECTRICIAN ONLY IN ACCORDANCE WITH NATIONAL, LOCAL BUILDING AND ELECTRICAL CODES. DISCONNECT POWER AT ELECTRICAL PANEL BEFORE SERVICING.

