

### INTENDED USE

The 2.5-Inch Linear Perimeter Wall Wash LED Recessed Light is designed to deliver clean, even vertical illumination across architectural surfaces in hospitality, residential, retail, office, and commercial environments. With a range of color temperatures, dimming capabilities, CRI, and voltage options—including RGBW and Bluetooth Mesh app control—it offers flexibility for tailored lighting schemes. Standard lengths from 2 to 8 feet can be joined for seamless runs, providing consistent performance and simple maintenance.

### PRODUCT FAMILY

<b>12100-20-P</b>	Pendant Mount	2', 3', 4', 5', 6' & 8'
<b>12100-20-W</b>	Wall Mount Surface	Continuous Run & Custom Length   Consult Factory
<b>12100-20-S</b>	Mount Recessed	
<b>12100-20-R</b>	Mount Perimeter	
<b>12100-20-PR</b>	Recessed	

### AVAILABLE LENGTHS

### FEATURES

**Construction:** Die-formed and welded 22-gauge cold rolled steel, painted finish with premium paint

**Continuous Run:** Full ability to tandem mount for continuous run application

**Custom Design:** Offered with pre-fabricated and fully illuminated corners

**Lens:** Glare-free, frosted acrylic snap-in flat or 1/2" snap-in drop lens for even distribution

**Voltage:** 50/60 Hz Constant current 0-10V @ 120-277V, TRIAC & ELV @ 120V RGBW Tunable White @ 120-277V

**Dimming for Static Color:** 0-10V, TRIAC (Forward-phase), ELV (Reverse-phase)

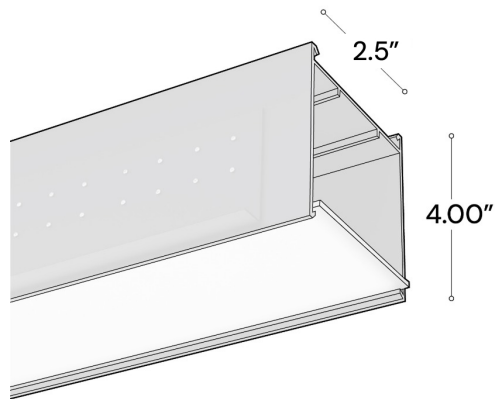
**RGBW Smart Phone App:** Bluetooth App for iOS and Android (See Page 6)

**Life:** +60,000 Reported L70 Hours @ 55°C

**Operating Temperature:** 4°F (-20°C) ~ 122°F (50°C)

**Warranty:** 5 years (Static Colors) and 3 years (RGBW & Tunable White) Carefree for parts & components (Labor not included)

**Listings:** cULus Listed, UL listed for damp location, DLC Listed, ADA compliant (Less than 4" off wall), Assembled in USA (ARRA) standard, Made in USA (BAA) optional



Length :  
2', 3', 4', 6', 8' & Continuous Run



## ORDERING INFORMATION Example:

<b>MODEL</b>		<b>12100-20-PR</b> 2.5" x 4"		
<b>MOUNTING<sup>1</sup></b>		<b>T9</b> 9/16 T-Bar Grid <sup>2</sup> <b>T15</b> 15/16 T-Bar Grid <sup>2</sup>	<b>S</b> 9/16 Screwslot Grid <sup>2</sup> <b>H</b> Hard ceiling, 1/2" Flange <sup>3</sup>	<b>W</b> Wood Ceiling <sup>3</sup>
<b>FLANGE TYPE</b>		<b>TF</b> Trim Flange <sup>4</sup>	<b>TFS</b> Single Side Trim Flange <sup>5</sup>	<b>TL</b> Trimless <sup>3</sup>
<b>REGRESSED TYPE</b>		<b>F</b> Flat	<b>2</b> 2-Inch regressed <sup>6</sup>	<b>4</b> 4-Inch regressed <sup>6</sup>
<b>LUMEN OUTPUT</b> <i>Wattage &amp; Lumens per foot</i>		<b>STATIC WHITE</b> <b>D4</b> 4.5 Watts   734 lm <b>D6</b> 6.75 Watts   924 lm <b>D9</b> 9 Watts   991 lm <b>D13</b> 13.5 Watts   1467 lm	<b>TUNABLE WHITE</b> <b>TW-D4</b> 4.5 Watts   734 lm <sup>15</sup> <b>TW-D6</b> 6.75 Watts   924 lm <sup>15</sup> <b>TW-D9</b> 9 Watts   991 lm <sup>15</sup> <b>TW-D12</b> 12 Watts   1597 lm <sup>15</sup> <b>TW-D13</b> 13.5 Watts   1796 lm <sup>15</sup> <b>TW-DLO<sup>1</sup></b> 480 lm <sup>16</sup> <b>TW-DHO<sup>1</sup></b> 768 lm <sup>16</sup>	<b>RGBW</b> <b>RGBW-D9</b> 19.3 Watts   563 lm <b>RGBW-D18</b> 18.6 Watts   1126 lm
<b>SHAPE</b>	(Specify in Feet)	<b>S<sub>SR</sub></b> Single Run <i>SR</i> = 2', 3', 4', 5', 6' or 8' <sup>17</sup> <b>CR<sub>SR</sub></b> Continuous Run <i>SR</i> = Length	<b>RC<sub>SR</sub></b> Rectangle <sup>7</sup> <i>RC</i> = Width & Length <b>SQ<sub>SR</sub></b> Square <sup>7</sup> <i>SR</i> = Width & Length	<b>U<sub>SR</sub></b> U <sup>7</sup> <i>SR</i> = Base Leg & Side Leg
<b>COLOR TEMPERATURE</b>		<b>STATIC WHITE</b> <b>27K</b> 2700K Warm White <sup>13</sup> <b>30K</b> 3000K Soft White <b>35K</b> 3500K Neutral White <b>40K</b> 4000K Cool White <b>50K</b> 5000K Daylight	<b>TUNABLE WHITE</b> <b>TW2750</b> 2700-5000K (Wired) <sup>11</sup> <b>TW2065</b> 2000-6500K (Wired) <sup>11</sup> <b>TW3065</b> 3000-6500K (Wireless) <sup>8, 10</sup>	<b>RGBW<sup>12</sup></b> <b>RGBW30</b> RGB + W (3000K) <b>RGBW40</b> RGB + W (4000K)
<b>DRIVER</b>		<b>STATIC WHITE</b> <b>Blank</b> 0-10V (Dim to 1%) <sup>Standard</sup> <b>TRI</b> Triac (120V) <b>ELV</b> Electronic Low Voltage (120V)	<b>TUNABLE WHITE</b> <b>O50</b> Tunable White 0-10V	<b>RGBW<sup>12</sup></b> <b>24V</b> 24V DC Power Supply <sup>14</sup> <b>DMX</b> 4-Channel DMX512 Decoder
<b>FINISH</b>		<b>WH</b> White (Matte) <sup>Standard</sup> <b>SL</b> Silver (Matte)	<b>BK</b> Black (Matte) <b>RAL#</b> Specify RAL # (Pg. 3)	
<b>CRI</b>		<b>Blank</b> 80+ <sup>Standard</sup>	<b>9</b> 90+ <sup>11</sup>	
<b>OPTIONS</b>		<b>XEM8</b> 8W External Emergency Battery <b>EM15</b> 15W Emergency Battery <b>EM20</b> 20W Emergency Battery <b>EM25</b> 25W Emergency Battery	<b>OS</b> Occupancy & Daylight Harvesting <b>DS</b> Sensor Daylight Dimming Photo Sensor <b>GTD</b> Bodine Generator Transfer Device <b>COC</b> Chicago Code Compliance Separated EM Feed	<b>RGBW-RH-WH</b> Remote holder for RGBW-RF-WH (White) <b>RGBW-RH-BK</b> Remote holder for RGBW-RF-BK (Black)
<b>QUALIFICATIONS</b>		<b>Blank</b> Assembled in USA (ARRA) <sup>Standard</sup>	<b>BAA</b> Made in USA (Buy American Act)	
<b>WARRANTY</b>		<b>Blank</b> 5 Year Warranty <sup>Standard</sup>	<b>W7</b> 7 Year Warranty	<b>W10</b> 10 Year Warranty
<b>CONTROLS</b>		<b>STATIC WHITE</b> <b>Blank</b> Not Required	<b>TUNABLE WHITE<sup>8</sup></b> <b>TW-WWR-WH</b> Wireless Wall Remote (White) <b>TW-2NI-WH</b> Dual Wall Switch	<b>RGBW<sup>12</sup></b> <b>RGBW-APP</b> iOS/Android Bluetooth App <b>RGBW-RF-WH</b> RF Remote Control 4 Zone (White) <b>RGBW-RF-BK</b> RF Remote Control 4 Zone (Black) <b>RGBW-DMX</b> DMX Wall 100-240VAC (White) <b>RGBW-DMX5V</b> DMX Wall 5VDC (White)

<sup>1</sup> Compatible with various wall types. The installer must use appropriate screws suitable for each specific wall type. A mounting accessory is included for both trimless and flange mount types, allowing for adjustable spacing between the fixture and the wall, ranging from 0.5 inches (minimum) to 0.88 inches (maximum)

<sup>2</sup> For grid installations, an 18-gauge ceiling wire or tile hanger wire is required but not included. Please refer to the installation instructions for additional details. Suitable for T-bar and Screw slot grids.

<sup>3</sup> For Hard and Wood ceiling, a 3/8" threaded rod is required for fixture installation and is not included. Please refer to the installation instructions for further details.

<sup>4</sup> Ideal for installations where the grid structure is mounted to the wall, allowing the trim to rest on the grid structure on both sides.

<sup>5</sup> Ideal for installations where no grid structure is attached to the wall, allowing the fixture's trim to rest on only one side

<sup>6</sup> A sliding side piece allows for adjusting the light's visibility at the ceiling level. The fixture can also be recessed deeper into the ceiling plane for a more subtle lighting effect

<sup>7</sup> Minimum Length of 2 Feet

<sup>8</sup> Wireless control must be specified (page 7)

<sup>9</sup> Must be Paired with O50 Driver

<sup>10</sup> Must specify for RGBW & Wireless Tunable White 24V Driver <sup>11</sup> Not available for RGBW

<sup>12</sup> Bluetooth app control or wireless control must be specified for this feature (cannot be combined)

<sup>13</sup> Only available in 90CRI

<sup>14</sup> 24V Driver must be specified for RGBW & Wireless Tunable White

<sup>15</sup> Only for Wired Tunable White Control

<sup>16</sup> Only for Wireless Tunable White Control

<sup>17</sup> Max lumen for 6' & 8' lengths is 1467 lm

AVAILABLE FINISHES

Standard


	Matte White	RAL #9003
--	-------------	-----------

Set up fee and longer lead time will be applied on non-standard finishes.

Metropolitan

	Black	RAL #9011
	Silver	RAL #9022
	Asher Grey	RAL #7004
	Mason	RAL #7039
	Slate	RAL #7031
	Tech Grey	RAL #7016
	Chocolate Spice	RAL #8017
	Urban Native	RAL #8025
	Carmin	RAL #8028
	Reseda Green	RAL #6011

Vibrant

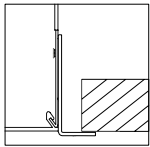
	Violet Dreams	RAL #4006
	Purple Red	RAL #3004
	Carmine Red	RAL #3002
	Rose	RAL #3017
	Pure Orange	RAL #2004
	Traffic Yellow	RAL #1023
	Daisy	RAL #1018
	Antique Spring	RAL #6019
	Island Skye	RAL #6027
	Sky Blue	RAL #5015



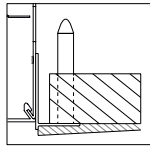
## MOUNTING OPTIONS

### Hard ceiling

⚠ Luminaire must be installed prior to drywall. A 3/8" threaded rod to suspend the fixture is required and is not included.



Drywall  
Trim Flange

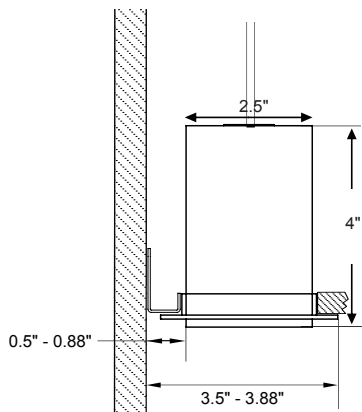


Drywall  
Trimless

#### Trim Flange

1/2" trim flanged drywall ceiling & wall

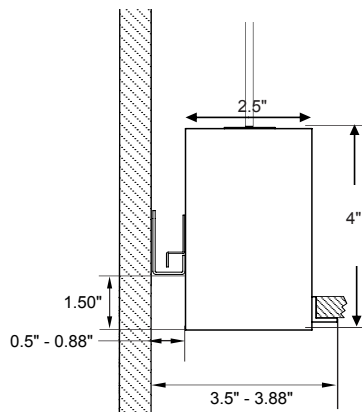
TF



#### Flanged on one side

1/2" trim flanged drywall ceiling & trimless wall

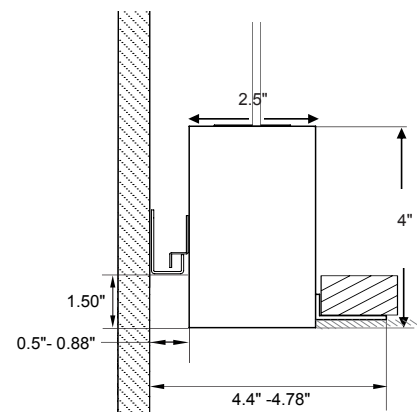
TFS



#### Trimless

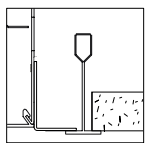
Trimless drywall ceiling & wall

TL



### Lay-in Grid

⚠ An 18-gauge ceiling wire or tile hanger wire is required to suspend the fixture and not included. Suitable for T-bar and Screw slot grids.

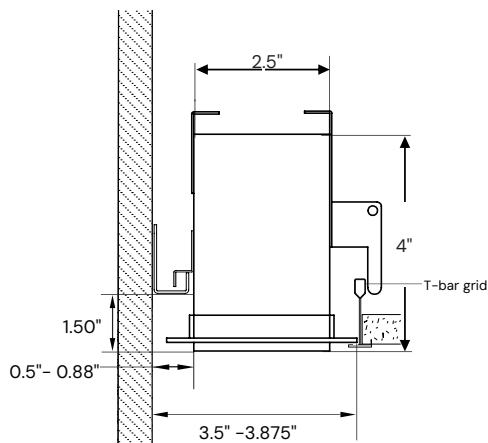


Grid  
15/16" or 9/16" Flat Tee  
main runner required for  
finish edge.

#### Trim Flange

Flushed Lens Fixed mounting type (1/2" flange on both sides)

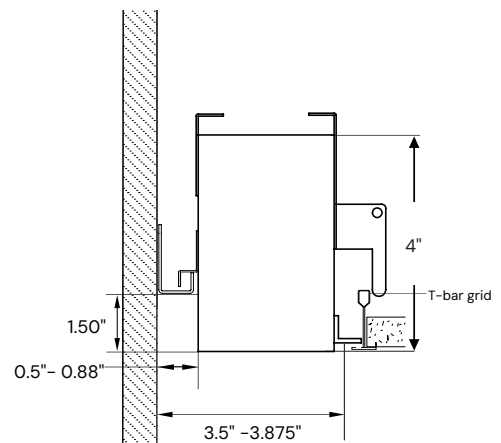
TF



#### Flanged on one side

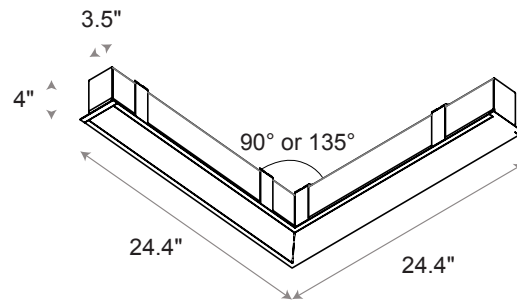
Flushed Lens trimless on the wall and 1/2" flange on the other side

TFS



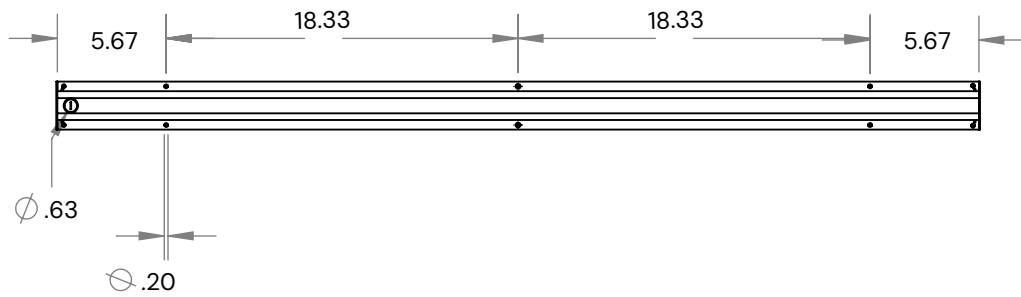
## SHAPES

### L Shape

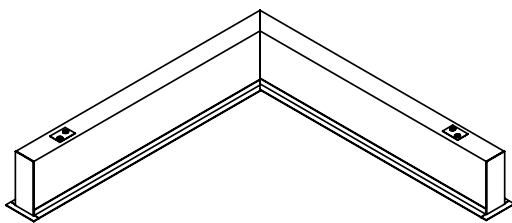


## KNOCKOUT LOCATIONS

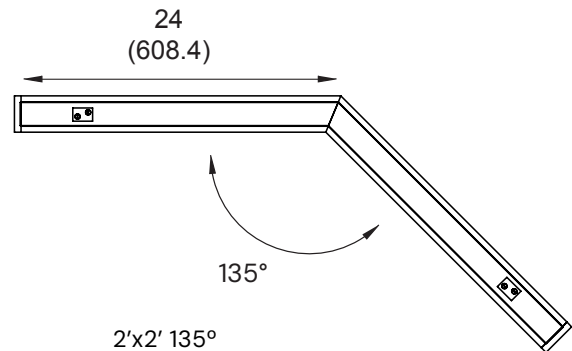
### 4-Foot Body



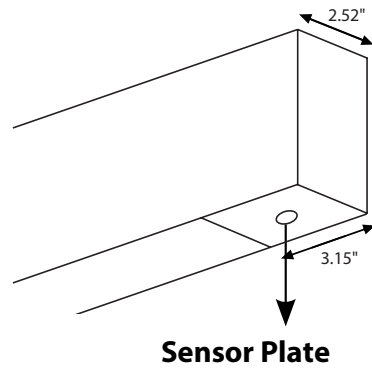
## HORIZONTAL LIT CONNECTORS



1'x1' 90°  
1'x2' 90°  
2'x1' 90°  
2'x2' 90°



## OCCUPANCY & DAYLIGHT HARVESTING SENSOR

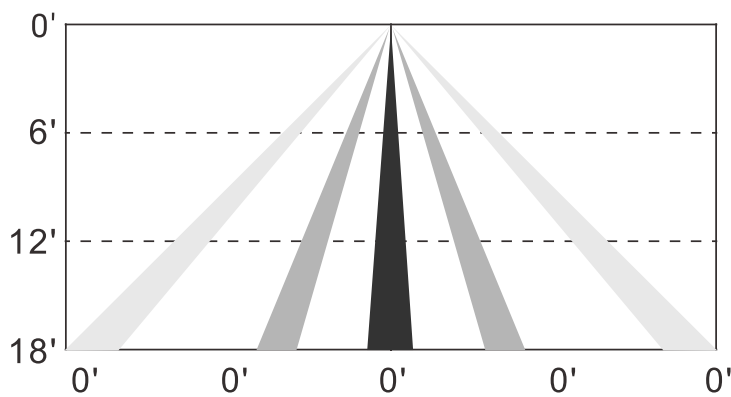


Lutron Vive Integral  
fixture control installation

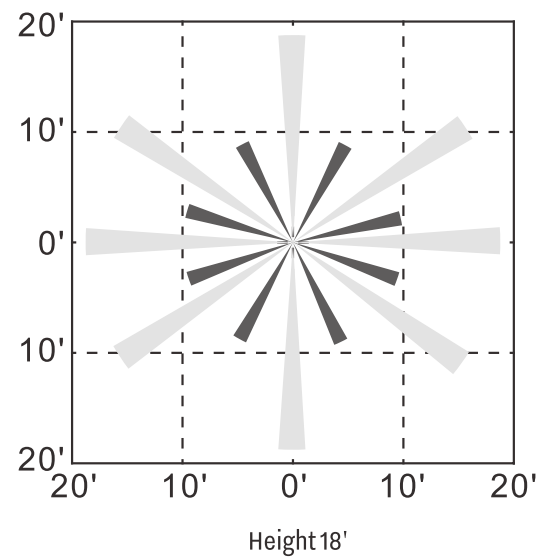


EasySense  
fixture-mount installation

### SIDE VIEW



### TOP VIEW



### OS, IFS105SE coverage pattern

COMPATIBLE DIMMERS

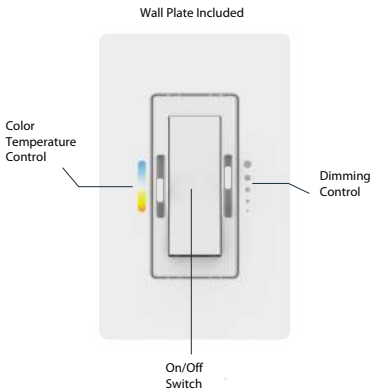


Static White

Triac	ELV	0-10V
TG-600P	DVELV-303P	NTSTV
LG-600P	SELV-300P	NFTV
TGCL-153P	MAELV-600	DVSTV
DV-600P	FAELV-500	
DVCL-153P		
S-603PG		
CT-103P		
S-600P		
6161	IPE04	IP710-DLZ
6633-P	VPE06-1LZ	
6683		
6631-2		
IPI06-1LZ		

TUNABLE WHITE

TW-2N1-WH Dual Wall Switch



Input: 120VAC ~ 60Hz  
Max Load: 600W  
Control: 0-10V  
Wired Tunable White: TW2750 & TW2065

WIRELESS TUNABLE WHITE CONTROL

-3065K (CONTROLS)



TW-WWR-WH (Wireless Wall Remote — White)

Dimensions	L 4.3" x W 2" x D 0.85"
Weight	0.1 lbs
Signal Type	RF (Radio Frequency) 2.4GHz
Zone	4 zone
Range	98ft from fixture
Working Temp.	-4°F to 131°F (-20°C to 55°C)
* Battery	2 x AAA battery

\*\* Not included.

## RGBW CONTROLS

### RGBW-APP | Bluetooth Smart Phone App



Smart Life



Tuya Smart

Bluetooth	
Software	IOS 8.0 and up, Android 4.4 and up
App	Smart Life or Tuya Smart supported
Features	Group, Scenes
Bluetooth Distance	> 49ft in open area
Additional Feature	Home Management / Third party control -> Alexa, Google Assistant (by others)

### Wireless RF Remote Control 4-Zone



RGBW-RF-WH



RGBW-RF-BK

#### RGBW-RF

Dimensions	W 2" x D 0.825" x H 4.725"
Weight	0.1lbs
Signal Type	RF (Radio Frequency) 2.4GHz
Range	98ft from fixture open ai
Zone / Mode	4 zones / 9 modes
Working Temp.	-4°F to 131°F (-20°C to 55°C)
* Battery	2 x AAA battery

\* Not includ



RGBW-RH-WH



RGBW-RH-BK

### DMX Wall Touch Panel



#### RGBW-DMX

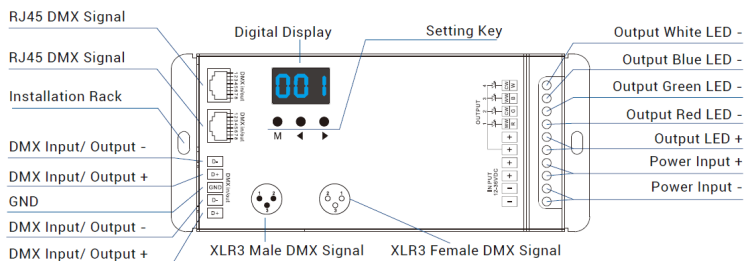
Zone	4 zone
Signal	DMX512 protocol
Input Voltage	100-240VAC
Dimensions	L 3.4" x H 3.4" x D 1.45"
Features	10 built-in mode, scene
Operating Temp.	-22°F ~ 131°F (-30°C ~ 55°C)



#### RGBW-DMX5V


Zone	4 zone
Signal	DMX512 protocol
Input Voltage	5VDC
Dimensions	L 7" x H 1.3" x D 1.9"
Features	12 built-in mode, scene
Operating Temp.	-22°F ~ 131°F (-30°C ~ 55°C)

### RGBW-DMX | 4-Channel DMX512 Decoder



Dimensions	L 6.5" x W 2.7" x D 1.5"
Output Current	8A / 4 channels
Input Voltage	12-36V DC
Output Power	768W (24V)
Frequency	PWM output

## LUTRON VIVE CONTROL (OPTIONAL)

Smart Sensors	Protocol	Compatible Networks	Occupancy	Daylight	Temperature Reporting	Communication to Luminaire
	Lutron Clear Connect	Lutron Vive System Network	Enabled	Enabled	No	Wireless



Controls Installed on the Fixture



**VDO**  
Individual  
Fixture Control

Shipped LUTRON VIVE Enabled with VDO Vive Integral Fixture Control (with Sensing).



**VRF**  
Individual  
Fixture Control

Shipped LUTRON VIVE Enabled with VRF Vive Integral Fixture Control (RF Only) Install on the Fixture.



**FCJS0**  
Individual  
Fixture Control

Shipped LUTRON VIVE Enabled FCJS0 Control Module Installed on the Fixture.



**FCJSE**  
Individual  
Fixture Control

Shipped LUTRON VIVE Enabled FCJSE Control Module Control Module Installed on the Fixture.



**FCJS0EM**  
Individual  
Fixture Control

Shipped LUTRON VIVE Enabled FCJS0 Control Module Installed on the Fixture.



**FCJSEEM**  
Individual  
Fixture Control

Shipped LUTRON VIVE Enabled FCJSEEM Control Module Control Module Installed on the Fixture.



**RMJS8TEM**  
Individual  
Fixture Control

Shipped LUTRON VIVE Enabled RMJS8TEM Control Module Control Module Installed on the Fixture.



**RMJS8T**  
Individual  
Fixture Control

Shipped LUTRON VIVE Enabled RMJS8T Control Module Installed on the Fixture.



**RMJSECO32**  
Individual  
Fixture Control

Shipped LUTRON VIVE Enabled RMJSECO32 Control Module Control Module Installed on the Fixture.

## PHOTOMETRY (FOR STATIC COLOR TEMPERATURES ONLY)



## COLOR TEMPERATURE GUIDE

