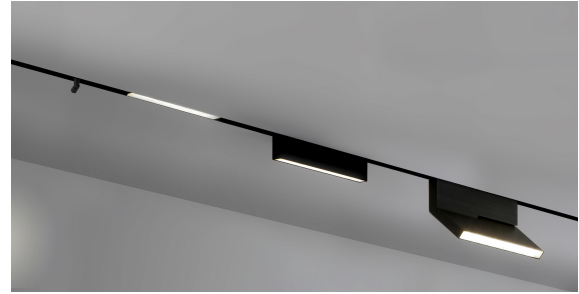


FIXTURE SPECIFICATIONS

INTENDED USE

The specification grade **Legacy Modular Architectural LED Magnetic Lighting System**. The Legacy system is low voltage (24VDC) LED-lighting, offering tremendous flexibility in terms of placement and aesthetics. The system consists of three basic elements: a track, a transformer and lighting components. The tracks, in which the interchangeable lighting components can be easily positioned and exchanged by means of magnets, can be mounted in two different ways: "built in (recessed)" or "surface mounted."



PRODUCT FAMILY

15100-S | Surface
15100-R | Recessed

AVAILABLE LENGTHS

L 39.25" x **W** 1.5" x **H** 3"
L 78.50" x **W** 1.5" x **H** 3"
Continuous Run | Consult Factory

FEATURES

- Construction:** Aluminum, paint-coated
- Continuous Row:** Full ability to tandem mount for continuous run applications
- Custom Design:** Magnetic module components
- Voltage:** 24VDC (remote LED driver to be supplied by factory)
- CRI:** >80
- Warranty:** 3 Years Carefree for Parts & Components (Labor Not Included)
- Listings:** cETL (LED Driver Only)



Step 1: CHANNEL ORDERING INFORMATION Example: (15100-SU-S-39-WH-27K)

Model	Channel	Shape	Finish	Color Temp
15100 Design	SU Surface	S Single Unit	WH White BK Black	<div style="color: #0070C0; font-weight: bold; margin-bottom: 5px;">Residential</div> 27K 2700K 30K 3000K <div style="color: #0070C0; font-weight: bold; margin-bottom: 5px;">Commercial</div> 35K 3500K 40K 4000K
	RE Recessed	CR Continuous Run		
		<div style="font-weight: bold; margin-bottom: 5px;">Total Run (in Inches)</div>		
		<div style="font-weight: bold; margin-bottom: 5px;">RC Rectangle</div>		
		<div style="font-weight: bold; margin-bottom: 5px;">SQ Square</div>		
		<div style="font-weight: bold; margin-bottom: 5px;">CU² Custom</div>		

Step 2: COMPONENT ORDERING INFORMATION Example: (MSF3-12 / LLF9 / LA320)

QTY	Type	Size (in.)	Wattage Lumens	Beam Spread	Model #	
		Multi-Cell Short Fixed 3-Cells	3.3" x 1.3" x 2"	4 Watts Lumens	12° 34° 48°	MSF3-12 MSF3-34 MSF3-48
		Multi-Cell Short Fixed 6-Cells	6.5" x 1.3" x 2"	8 Watts Lumens	12° 34° 48°	MSF6-12 MSF6-34 MSF6-48
		Multi-Cell Short Fixed 12-Cells	12.7" x 1.3" x 2"	16 Watts Lumens	12° 34° 48°	MSF12-12 MSF12-34 MSF12-48
		Multi-Cell Long Fixed 3-Cells	3.3" x 1.3" x 4.3"	4 Watts Lumens	12° 34° 48°	MLF3-12 MLF3-34 MLF3-48
		Multi-Cell Long Fixed 6-Cells	6.5" x 1.3" x 4.3"	8 Watts Lumens	12° 34° 48°	MLF6-12 MLF6-34 MLF6-48
		Multi-Cell Long Fixed 12-Cells	12.7" x 1.3" x 4.3"	16 Watts Lumens	12° 34° 48°	MLF12-12 MLF12-34 MLF12-48
		Multi-Cell Adjustable 3-Cells	3.3" x 1.3" x 7"	4 Watts Lumens	12° 34° 48°	MA3-12 MA3-34 MA3-48
		Multi-Cell Adjustable 6-Cells	6.5" x 1.3" x 7"	8 Watts Lumens	12° 34° 48°	MA6-12 MA6-34 MA6-48
		Multi-Cell Adjustable 9-Cells	12.7" x 1.3" x 7"	16 Watts Lumens	12° 34° 48°	MA9-12 MA9-34 MA9-48
		Linear Short Fixed 3	12.7" x 1.3" x 2"	13 Watts Lumens	Diffuse	LSF3
		Linear Short Fixed 6	25" x 1.3" x 2"	26 Watts Lumens	Diffuse	LSF6
		Linear Short Fixed 9	38" x 1.3" x 2"	39 Watts Lumens	Diffuse	LSF9

QTY		Type	Size (in.)	Wattage Lumens	Beam Spread	Model #
		Linear Long Fixed 3	12.7" x 1.3" x 4.3"	13 Watts Lumens	Diffuse	LLF3
		Linear Long Fixed 6	25" x 1.3" x 4.3"	26 Watts Lumens	Diffuse	LLF6
		Linear Long Fixed 9	38" x 1.3" x 4.3"	39 Watts Lumens	Diffuse	LLF9
		Linear Adjustable 120	3.3" x 1.3" x 7"	4 Watts Lumens	12° 34° 48°	LA120-12 LA120-34 LA120-48
		Linear Adjustable 220	6.5" x 1.3" x 7"	8 Watts Lumens	12° 34° 48°	LA220-12 LA220-34 LA220-48
		Linear Adjustable 320	12.7" x 1.3" x 7"	15 Watts Lumens	Diffuse	LA320
		Spot Short Single	1.4" Diameter 3" Tall	5 Watts Lumens	20° 30° 40° 60°	SSS-20 SSS-30 SSS-40 SSS-60
		Spot Short Double	1.4" Diameter 3" Tall	(2) 5 Watts Lumens	20° 30° 40° 60°	SSD-20 SSD-30 SSD-40 SSD-60
		Spot Long Single	2" Diameter 5.5" Tall	13 Watts Lumens	18° 24° 36°	SLS-18 SLS-24 SLS-36

Step 3: COMPLETE ORDERING INFORMATION Example: (15100-SU-S-39-WH-27K / MSF3-12 / LLF9 / LA320)

Channel / Qty - Component 1 / Qty - Component 2 / Qty - Component 3 / etc.