

## FEATURES & SPECIFICATIONS

### INTENDED USE

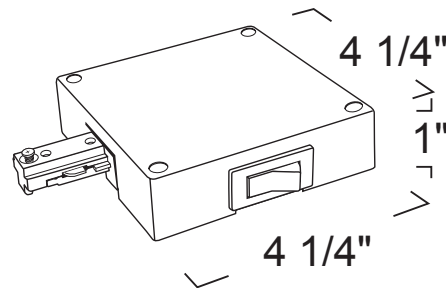
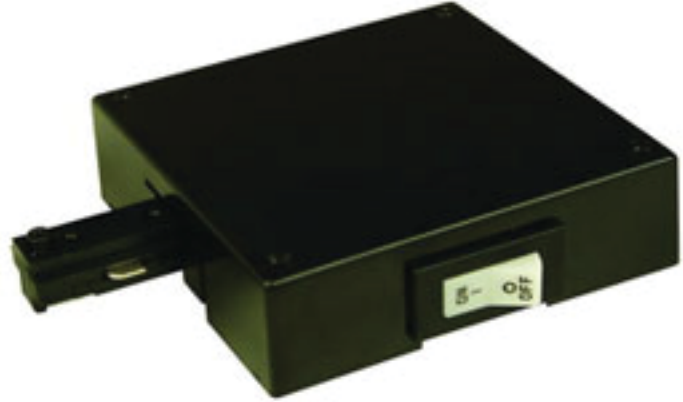
Limits current to track to save energy and meet new stringent energy codes.

### SIZE

W 4 1/4" x H 4 1/4"

### FEATURES

- Electrical feed mounts directly to surface for through ceiling wiring. Cover plate and feed mounts directly to 4 inch octagonal electrical box (not included).
- Track limited housing constructed of injection molded polycarbonate. Black plate constructed of galvanized steel.
- Multiple configurations available in Live End Feed, In Line Feed and L- Shape Feed
- 1 Circuit
- 120VAC
- ASHRAE/IESNA 90.1
- For CEC version use -CEC as Suffix



### Listings:



### Ordering Information:

Example: (13991-12-B)

Model	Wattage	Finish	Options
13991 Live End Feed	12 120W/1A- 120 1200W/10A-	W All White	CEC CEC version
13992 In Line Feed	30 300W/2.5A+ 144 1440W/12A-	B Black casing with White Switch	
13993 L-Shape Feed	60 600W/5A+ 108 1080W/9A-		