

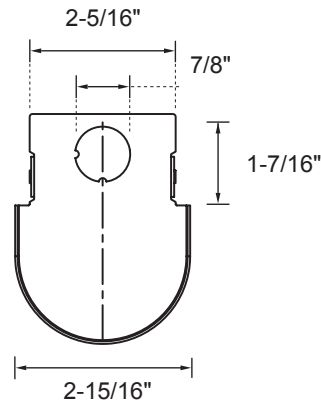
FIXTURE SPECIFICATIONS

INTENDED USE

The **Chela II Architectural LED Pendant Mount Direct Light Strip** features a compact design with efficient lighting that provides crisper brightness and more energy savings. The Chela II is ideal for indoor applications in industrial, commercial, institutional, or architectural installations.

FEATURES

- Construction:** Die-formed steel channel with knock-outs for versatile configuration and easy mounting
- Corrosion Resistant
- Finish:** High-gloss baked white enamel
- Lens:** Frosted Acrylic Diffuser
- Electrical:** Meets Class 1 or Class 2 Circuit
- Voltage:** 120-277 (50/60 Hz)
- Dimming:** 0-10V 1~100%
- CRI:** 83+
- Efficiency:** 126 lm/W
- Power Factor:** +0.95
- THD:** <20
- Operating Temperature:** -20°C (-4°F) - 50°C (122°F)
- Life:** 50,000 Hours (L80)
- Warranty:** 5 Years
- Listings:** UL/cUL Listed and Labeled
- DLC Listed
- Suitable for Damp Locations

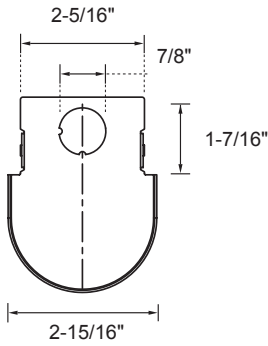


ORDERING INFORMATION Example: (12184-2-D218-40K-AC48-EM5)

Single Run		Wattage Lumen		Color Temp		Mounting		Options		
Model 12184	Cont. Run Specify Run Length in Feet 2', 4' or 8'	2 Foot		30K	3000K	AC48	48" Adjustable Aircraft Cable	EM5	5W Emergency Ballast	
		D218	18 Watts 1944 Lumens	35K	3500K				EM8	8W Emergency Ballast
		D236	36 Watts 3888 Lumens	40K	4000K				EM16	16W Emergency Ballast
		4 Foot		50K	5000K	DD	Integrated Daylight			
		D427	27 Watts 2916 Lumens	TUN	Tunable White 2700K-5000K		ST24	24" Stem Mount Kit	OS	Integrated Occupancy Sensor
		D436	36 Watts 3888 Lumens			D454				
		8 Foot		D854	56 Watts 5832 Lumens	ST48	48" Stem Mount Kit			
		D872	72 Watts 7776 Lumens	D8108	108 Watts 11664 Lumens					

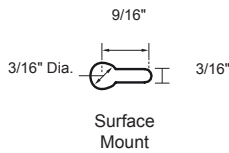
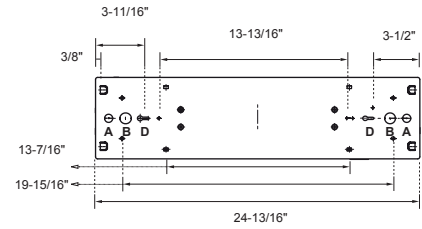
DIMENSIONS

END VIEW

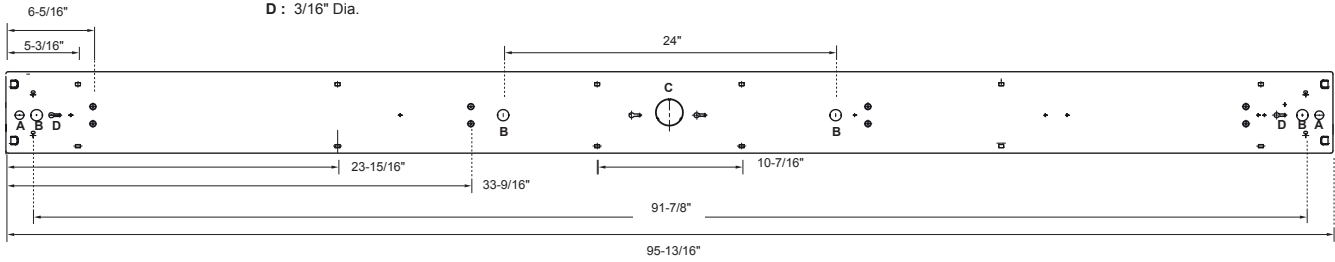
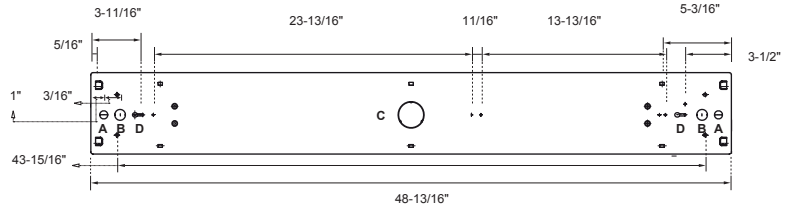


Specifications: 12184-2 Weight: 4.7 lbs (2.13 kg) Specifications: 12184-4 Weight: 6.9 lbs (3.13 kg) Specifications: 12184-8 Weight: 10.43 lbs (4.73 kg)

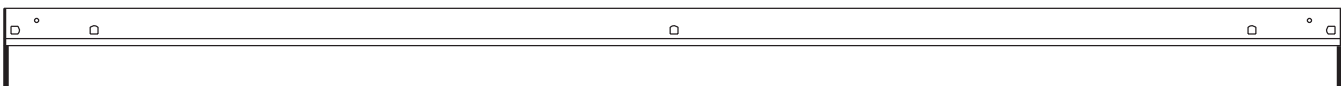
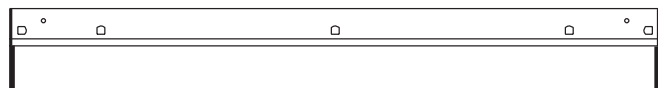
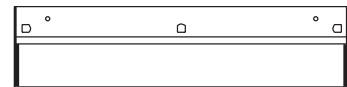
TOP VIEW



- A : 11/16" Dia.
- B : 7/8" Dia.
- C : 2" Dia.
- D : 3/16" Dia.



SIDE VIEW



CONTROLS

Smart Sensors	Protocol	Compatible Networks	Occupancy	Daylight	Temperature Reporting	Communication to Luminaire
enlighted	Enlighted RF	Enlighted RF	Integrated	Integrated	Yes	Wireless
LUTRON	EcoSystem	Quantum, Energi Savr Node, Energi TriPak	Enabled	Enabled	No	Wired
VIVE	Lutron Clear Connect*	Lutron Vive System Network	Enabled	Enabled	No	Wireless
PHILIPS	ZigBee HA	Philips	Enabled	Enabled	No	Wired

Controls Installed on the Fixture



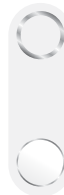
FCJS-010
Individual
Fixture Control

Fixture Will be Shipped LUTRON VIVE Enabled with LUTRON FCJS-010 0-10V Control Module Installed on the Fixture. Fixtures will be compatible with Lutron FC-SENSOR Occupancy/Daylight Sensor or FC-VSENSOR Vacancy/Daylight Sensor which can be Added in the Field for Remote Mounting. Fixture May be Controlled with any Vive control systems. Fixtures must be ordered with a 0-10V. Driver.



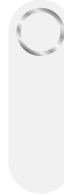
FCJS-ECO
Individual
Fixture Control

Fixture Will be Shipped LUTRON VIVE Enabled with LUTRON FCJS-ECO EcoSystem Control Module Control Module Installed on the Fixture. Fixtures will be compatible with Lutron FC-SENSOR Occupancy/Daylight Sensor or FC-VSENSOR Vacancy/Daylight Sensor which can be Added in the Field for Remote Mounting. Fixture May be Controlled with any Vive control systems. Fixtures must be ordered with a Lutron Driver.



DFCSJ-OEM-OCC

Fixture Will be Shipped LUTRON VIVE Enabled with DFCSJ-OEM-OCC* Vive Integral Fixture Control (with Sensing) Installed on the Fixture. Fixture May be Controlled with any Vive control systems. Fixtures must be ordered with a DMX or Lutron EcoSystem Driver



DFCSJ-OEM-RF

Fixture Will be Shipped LUTRON VIVE Enabled with LUTRON DFCSJ-OEM-RF* Vive Integral Fixture Control (RF Only) Installed on the Fixture. Fixture May be Controlled with any Vive control systems. Fixtures must be ordered with a DMX or Lutron EcoSystem Driver.

Controls Provided by Lutron



Vive Wireless Hub



DayLight
Sensor



Ceiling Mount
Occupancy/Daylight
Sensor



Ceiling Mount
Occupancy Sensor



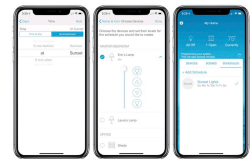
Pico
Remote



Wall Mount
Switch



Wall Mount
Occupancy Sensor



Lutron App

CONTROLS



Fixture will be shipped with Leviton ZL027-N0W power control module installed on the fixture. Fixtures will be compatible with Leviton ZL00J-D0W sensor control module which can be added in the field for remote mounting. Fixture must be controlled with Leviton Intellect Keypad Room Controller, or Leviton Neuron App.



ZL027-N0W
Power control module



ZL00J-D0W
Sensor control module

Leviton Keypad



ZLDNK-1W



ZLDNK-2W



ZLDNK-4W



ZLDNK-8W

Intellect™ Keypad Room Controller (Required)

Leviton App



Neuron App



Philips EasySense sensors provide luminaire-level control with Occupancy sensing, Daylight harvesting, and Field task tuning.

Controls Installed on the Fixture



PHILIPS-XSR + SNS200

Fixture will be Shipped with EasySense SNS200 Sensor installed and PHILIPS-XSR driver. Fixture May Only be Controlled with Philips Field App or Wireless Switches.



SRB + SNS200

Fixture Will be Shipped with EasySense SNS200 Sensor installed and PHILIPS SRB Bridge. Fixture May Only be Controlled with Philips Field App or Wireless Switches or any 0-10V. Wall Box Dimmer.



Controls Provided by Philips



ZBT-S1AWH



ZBT-S2AWH

Ilumra Wireless Switches



PHILIPS-XSR + SNS200-CMP

Fixture will be Shipped Sensor Ready with PHILIPS-XSR driver and EasySense SNS200-CMP Sensor which is Included to be Remote Mounted. Fixture May Only be Controlled with Philips Field App or Wireless Switches



SRB + SNS200-CMP

Fixture Will be Shipped Sensor Ready with PHILIPS SRB Bridge and EasySense SNS200-CMP Sensor which is Included to be Remote Mounted. Fixture May Only be Controlled with Philips Field App or Wireless Switches or any 0-10V. Wall Box Dimmer.





SRB

Fixture will be Shipped Sensor Ready with SRB Bridge. Fixture will be Compatible with EasySense Sensor SNS200-CMP which can be Added in the Field for Remote Mounting. Fixture May Only be Controlled with Philips Field App or Wireless Switches or any 0-10V. Wall Box Dimmer.



Philips Field App

COMPATIBLE DIMMERS

MFG	Triac	ELV	0-10
	TG-600P	DVELV-303P	NTSTV
	LG-600P	SELV-300P	NFTV
	TGCL-153P	MAELV-600	DVSTV
	DV-600P	FAELV-500	
	DVCL-153P		
	S-603PG		
	CT-103P		
S-600P			
	6161	IPE04	IP710-DLZ
	6633-P	VPE06-1LZ	
	6683		
	6631-2		
	IPI06-1LZ		

COLOR TEMPERATURE GUIDE



PHOTOMETRICS

12184-2-D218-30K

Illuminance at a Distance

Center Beam FC Beam Width

1.7FT	286 FC	2.8 FT	3.4 FT
3.3FT	75.9 FC	5.4 FT	6.5 FT
5.0FT	33.1 FC	8.1 FT	9.9 FT
6.7FT	18.4 FC	10.9 FT	13.3 FT
8.3FT	12.0 FC	13.5 FT	16.4 FT
10.0FT	8.27 FC	16.3 FT	19.8 FT

- Vert. Spread: 78.2°
- Horiz. Spread: 89.5°

12184-2-D236-30K

Illuminance at a Distance

Center Beam FC Beam Width

1.7FT	557 FC	4.5 FT	5.9 FT
3.3FT	148 FC	8.7 FT	11.4 FT
5.0FT	64.3 FC	13.2 FT	17.3 FT
6.7FT	35.8 FC	17.6 FT	23.1 FT
8.3FT	23.3 FC	21.8 FT	28.7 FT
10.0FT	16.1 FC	26.3 FT	34.5 FT

- Vert. Spread: 105.5°
- Horiz. Spread: 119.9°

12184-4-D427-30K

Illuminance at a Distance

Center Beam FC Beam Width

1.7FT	436 FC	4.5 FT	5.9 FT
3.3FT	116 FC	8.7 FT	11.4 FT
5.0FT	50.4 FC	13.2 FT	17.3 FT
6.7FT	28.1 FC	17.6 FT	23.1 FT
8.3FT	18.3 FC	21.8 FT	28.7 FT
10.0FT	12.6 FC	26.3 FT	34.5 FT

- Vert. Spread: 105.5°
- Horiz. Spread: 119.9°

12184-4-D454-30K

Illuminance at a Distance

Center Beam FC Beam Width

1.7FT	846 FC	4.5 FT	5.9 FT
3.3FT	224 FC	8.7 FT	11.4 FT
5.0FT	97.8 FC	13.2 FT	17.3 FT
6.7FT	54.4 FC	17.6 FT	23.1 FT
8.3FT	35.5 FC	21.8 FT	28.7 FT
10.0FT	24.4 FC	26.3 FT	34.5 FT

- Vert. Spread: 105.5°
- Horiz. Spread: 119.9°

12184-8-D872-30K

Illuminance at a Distance

Center Beam FC Beam Width

1.7FT	1,205 FC	4.5 FT	5.9 FT
3.3FT	320 FC	8.7 FT	11.4 FT
5.0FT	139 FC	13.2 FT	17.3 FT
6.7FT	77.6 FC	17.6 FT	23.1 FT
8.3FT	50.5 FC	21.8 FT	28.7 FT
10.0FT	34.8 FC	26.3 FT	34.5 FT

- Vert. Spread: 105.5°
- Horiz. Spread: 119.9°

12184-8-D8108-30K

Illuminance at a Distance

Center Beam FC Beam Width

1.7FT	1,645 FC	2.8 FT	3.4 FT
3.3FT	437 FC	5.4 FT	6.5 FT
5.0FT	190 FC	8.1 FT	9.9 FT
6.7FT	160 FC	10.9 FT	13.3 FT
8.3FT	69.0 FC	13.5 FT	16.4 FT
10.0FT	47.5 FC	16.3 FT	19.8 FT

- Vert. Spread: 78.2°
- Horiz. Spread: 89.5°