

# Induction Surface Mount Luminaires

Surface mounted Parking Garage/canopy fixture is constructed with a shatter and UV resistant polycarbonate lens.

Fixture can be mounted to electrical boxes or mounted directly to surfaces.

## FEATURES:

- 40W replaces up to 175 Watt Metal Halide
- 80W replaces up to 250 Watt Metal Halide
- Lumens: 40W: 2800 at 5000K  
80W: 6400 at 5000K
- 100,000 Hour Life
- Self-contained generator
- Universal 120V through 277V
- Maintenance free
- Dusk To Dawn and occupancy sensor available
- Can be mounted on electrical boxes or directly to surfaces
- 10 Year Limited Warranty
- IP43
- Does not attract insects

## CONSTRUCTION:

- Diecast aluminum body
- Sealed for dirt and bugs
- High intensity, high temperature and UV resistant PC cover

**Induction light source:** Tubular shape

PROJECT NAME
CATALOG NUMBER
NOTES
FIXTURE TYPE



### Luminaire Ordering Information:

WATTS	ORDER CODE	MODEL NUMBER	LUMENS	LIFE (Hrs)	DIMENSIONS (L"xH")	K
40	71304	MLSM40IND50	2800	100,000	15 x 8.0	5000
80	71305	MLSM80IND50	6400	100,000	15 x 8.0	5000

Lighting layouts and spacing criteria available upon request



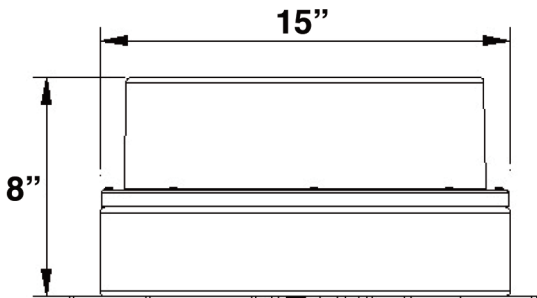
# INDUCTION SURFACE MOUNT LUMINARIES - 40 & 80W

## SPECIFICATIONS:

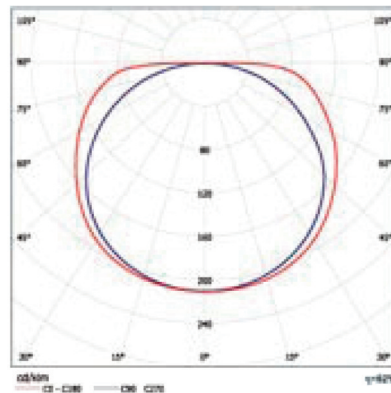
Item	Specification	MLSM40IND50	MLSM80IND50
General Performance	Spacing Criteria	Available upon request	Available upon request
	Color Temperature	5000K	5000K
	Lumens	2800	6400
	Efficacy	70 lumen/watt	80 lumen/watt
	Life	100,000 hours	100,000 hours
Electrical	Power Factor	> 90%	> 90%
	Input Voltage	120V-277V 50/60 Hz	120V-277V 50/60 Hz
	Power Consumption	40 Watts	80 Watts
Physical	Dimensions	15" x 8.0"	15" x 8.0"
	Housing	Diecast Aluminum	Diecast Aluminum
	Weight	5.1 lbs	5.1 lbs
	Lens	Shock proof polycarbonate	Shock proof polycarbonate
	Mounting	Fits electrical boxes or mounts directly to surfaces	Fits electrical boxes or mounts directly to surfaces
	Operating Temperature	-13°F to 122°F	-13°F to 122°F
Certification	Certification	UL	UL
	Environment	Indoor / Outdoor	Indoor / Outdoor

Lighting layouts and spacing criteria available upon request

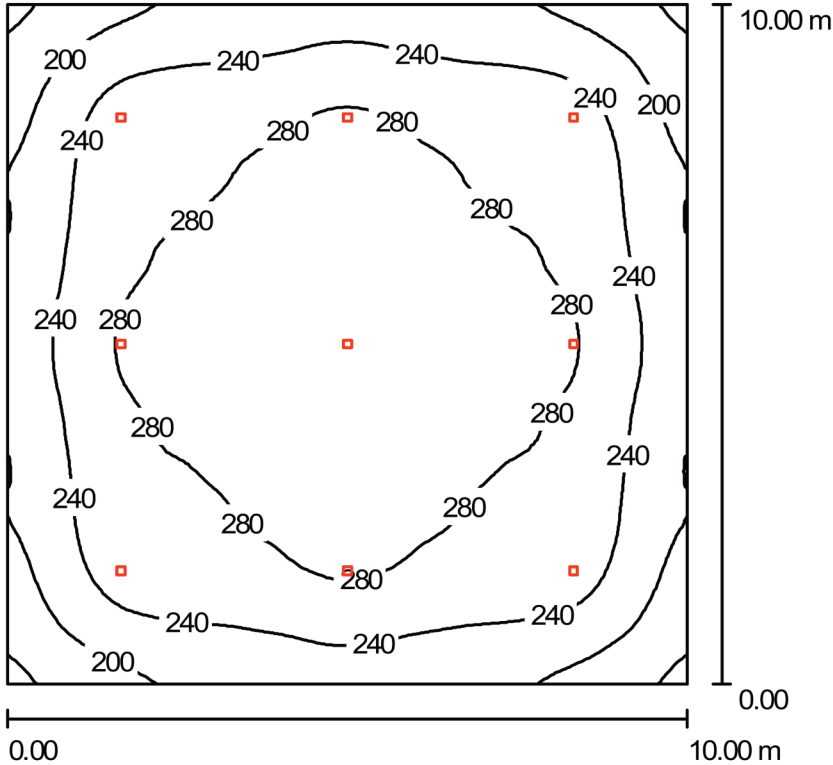
## DIMENSIONS:



## PHOTOMETRICS:



# INDUCTION SURFACE MOUNT LUMINARIES - 40 & 80W



Height of Room: 4.000 m, Mounting Height: 4.120 m, Light loss factor: 0.80

Values in Lux, Scale 1:129

Surface	$\rho$ [%]	$E_{av}$ [lx]	$E_{min}$ [lx]	$E_{max}$ [lx]	$u0$
Work plane	/	255	152	313	0.595
Floor	20	229	153	277	0.666
Ground	70	71	57	113	0.805
Walls (4)	50	185	114	297	/

## Luminaire Parts List

No.	Pieces	$\Phi$ [lm]	P [W]
1	9	6400	80.0
		Total:	57600 720.0

Specific connected load:  $7.20 \text{ W/m}^2 = 2.82 \text{ W/m}^2/100 \text{ lx}$  (Ground area:  $100.00 \text{ m}^2$ )