

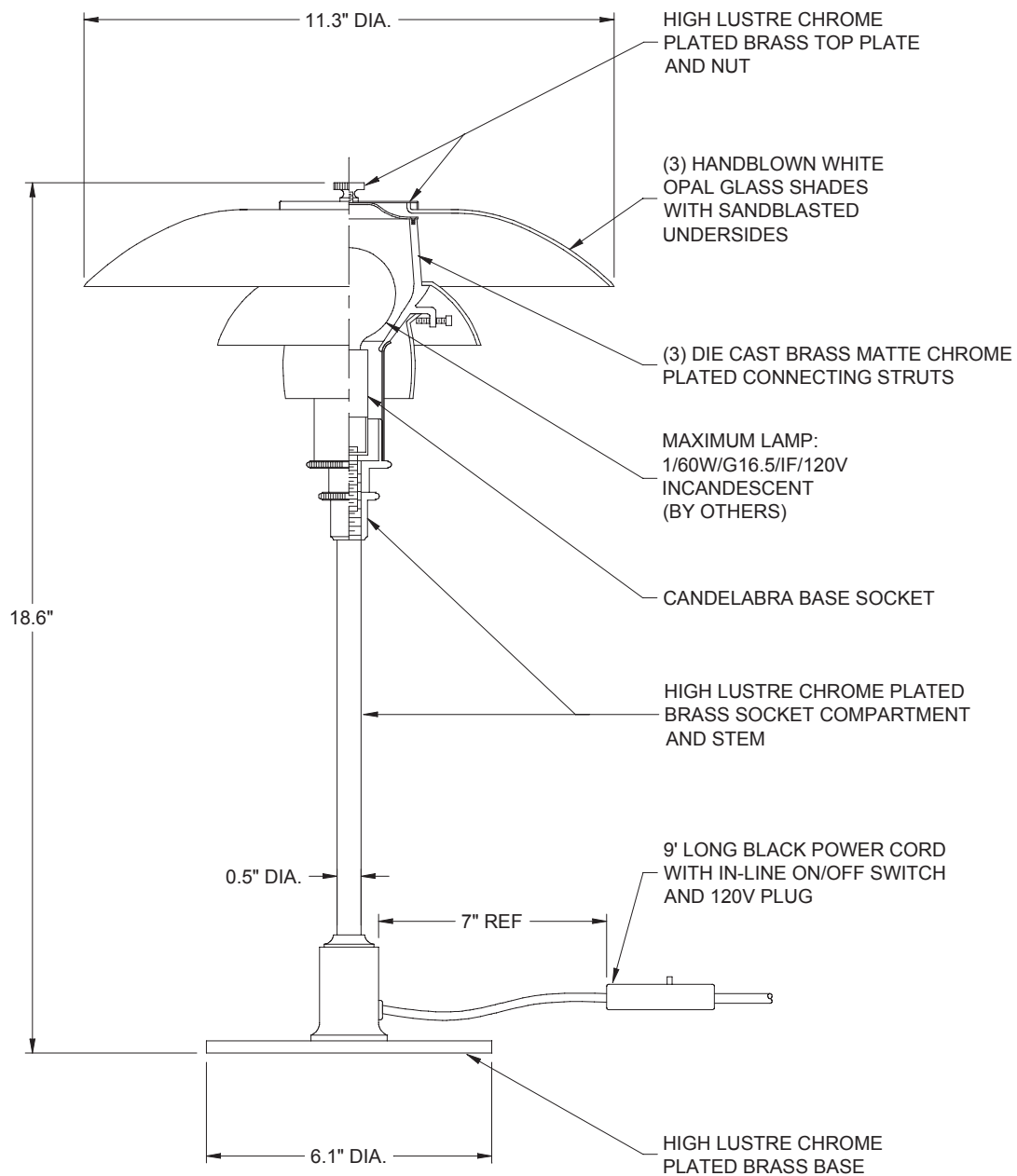
PH 3/2 Glass Table

Design: Poul Henningsen

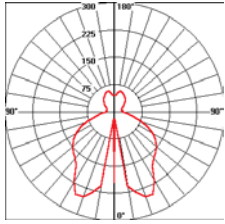
Type:

Project:

Catalog Number:



PH 3/2 Glass Table



Photometric Report: PH31/2-21/2-F-1-100W-A19-IF.IES
 Report No.: LP0380
 Poulsen Report No.: PH31/2-21/2-F-1-100W-A19-IF.IES
 Luminaire: PH 31/2-21/2 Floor
 Lamp: 1/100W/A19/IF
 Efficiency: 55.1%
 Description: All data shown are per 1750 lumens. This report can be used for calculation on all versions. Use only actual lumen data when calculating.

Candlepower Distribution

Vertical Angle	Candela
0	196
5	20
10	208
25	252
35	183
45	159
55	138
65	102
75	57
90	24
120	28
150	53
180	44

Zonal Lumen Summary

Zone	Lumens	% Lamp	% Fixture
0-30	197	11.3	20.4
0-40	315	18.0	32.6
0-60	561	32.1	58.1
0-90	758	43.3	78.5
90-120	69	3.9	7.2
90-130	98	5.6	10.2
90-150	161	9.2	16.7
90-180	207	11.8	21.5
0-180	965	55.1	100.0

Weblink: 134

Design: Poul Henningsen

Light Concept: The fixture is designed based on the principle of a reflective three-shade system, which directs the majority of the light downwards. The shades are made of hand-blown opal three-layer glass, which is glossy on top and sandblasted matte on the underside, giving a soft and diffuse light distribution.

Finish: Black chrome plated or high lustre chrome plated. White opal glass.

Material: Base: Black chrome plated or high lustre chrome plated, brass. Shades: Handblown white opal glass. Top plate: Black chrome plated or high lustre chrome plated, spun brass. Stem: Black chrome plated or high lustre chrome plated, brass.

Mounting: Cord type: Black. Cord length: 9'. Switch: In-line on/off switch provided.

Weight: Max. 6 lbs.

Label: cULus, Dry location. IBEW.

Product code	Light source	Voltage	Finish
PH3/2-T	1/60W/G16.5/IF candelabra	120V	BLK CHR PLA CHR

Info notes

- I. All handblown opal glass shades are sandblasted on the undersides for uniform light distribution.
- II. The comparable EU version has the following classification: Ingress Protection Code: IP20.

