

## FEATURES & SPECIFICATIONS

**INTENDED USE** — Sharing many popular Z Series elements, this solid-state strip offers long maintenance-free life, several color temperatures, lumen outputs and lengths. Ideal for new construction and retrofit applications in both T5 and T8 lengths. Ideal for uplight and downlight in commercial, retail, manufacturing, warehouse, cove and display applications.

**CONSTRUCTION** — Compact-design channel and cover are formed from code-gauge, cold-rolled steel. Improved easy "snap 'n' lock" end plates allow for quick attachment.

Finish: High-gloss, baked white enamel (standard). Five-stage iron phosphate pre-treatment ensures superior paint adhesion and rust resistance. Finish options include galvanized (GALV), matte black (MB) and smoke gray (SKGY).

**OPTICS** — LEDs provide 83 CRI at 3000K, 3500K or 4000K.

Lumen output ranges from 1400 to 4600 lumens. Beam angle is 110 FWHM (full width at half maximum). Replaceable clear and diffuse lenses (up to 10%) offer ingress protection from debris.

**ELECTRICAL** — Utilizes high-brightness LEDs integrated on a two-layer circuit board, ensuring cool-running operation. Internal pluggable wiring harness prevents wiring errors. Electronic LED driver is rated for 75 input watts maximum, multi-volt input and 0-10V dimming standard.

In 30°C (86°F) ambient environments, L70 is predicted to be greater than 100,000 hours; L86 is predicted to be 60,000 hours. Luminaire should be installed in applications where ambient temperatures do not exceed 30°C (86°F). Ambient temperatures that exceed 30°C (86°F) will result in reduced life and will void warranty.

**INSTALLATION** — Tool-less channel cover for easy installation.

Fixture may be surface, pendant or stem mounted. Three-point aligner locks in place for easy continuous row mounting.

**LISTINGS** — CSA Certified to US and Canadian safety standards. Damp location listed between -20°C (-4°F) and 30°C (86°F).

**WARRANTY** — Five-year limited warranty. [Full warranty terms located at www.acuitybrands.com/CustomerResources/Terms\\_and\\_conditions.aspx](http://www.acuitybrands.com/CustomerResources/Terms_and_conditions.aspx)

Note: Specifications subject to change without notice.

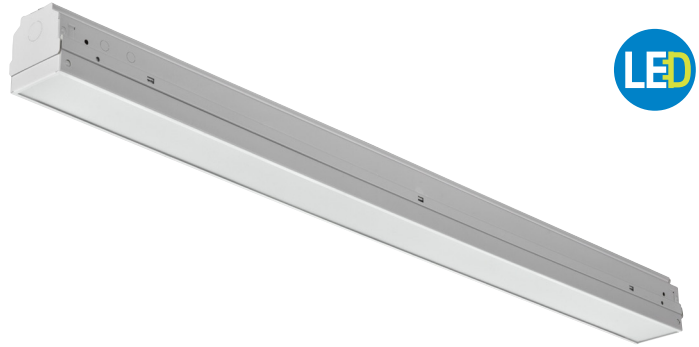
Catalog Number
Notes
Type



Lensed LED Striplight

# ZL2

2' and 4' Lengths



CONFIGURATIONS					
All dimensions are shown in inches (centimeters) unless otherwise noted.					
WIDTH	DEPTH	LENGTH	LUMENS	WATTAGE	COMPARABLE FLUORESCENT
3-3/8 (8.6)	3-1/4 (8.3)	46 (116.8) or 48 (121.9)	4600	75	2-lamp 32W T8 or 28W T5
		46 (116.8) or 48 (121.9)	2300	32	1-lamp 32W T8 or 28W T5
		24 (61.0)	2600	39	2-lamp 17W T8 or 15W T5
		24 (61.0)	1400	21	1-lamp 17W T8 or 15W T5

Specifications subject to change without notice.

### ORDERING INFORMATION

For shortest lead times, configure product using **standard options (shown in bold)**.

**Example:** ZL2 L46 2300L D75 LP840

ZL2		Length		Lumens		Voltage		D75 Driver	
<b>ZL2</b>	Lensed LED striplight	<b>L46</b>	46"	<b>2300L</b>	2300 lumens <sup>1</sup>	<b>(blank)</b>	MVOLT	<b>D75</b>	Driver
		L48	48"	4600L	4600 lumens <sup>1</sup>				
		L24	24"	2600L	2600 lumen <sup>2</sup>				
				1400L	1400 lumens <sup>2</sup>				
Lamp	Diffuser	Options				Finish			
<b>LP840</b>	83 CRI, 4000K	<b>(blank)</b>	Medium diffuse	BSL722	Emergency battery pack <sup>4,5</sup>	<b>(blank)</b>	White		
LP830	83 CRI, 3000K	CL	Clear <sup>3</sup>	PLR	Plug-in wiring <sup>7</sup>	GALV	Galvanized		
LP835	83 CRI, 3500K			BDP	Ballast disconnect plug	MB	Matte black		
						SKGY	Smoke gray		

Accessories: Order as separate catalog number.					
RKZL2DF	Medium-diffuse diffuser	ZAC72	Aircraft cable, 72"	ZAC144	Aircraft cable, 144"
RKZL2CL	Clear diffuser	ZACF72	Aircraft cable with feed, 72"	ZACF144	Aircraft cable with feed, 144"
HC36	Hanger chain, 36"	ZAC120	Aircraft cable, 120"	CMRB-50	Aisle motion sensor <sup>6</sup>
ZACVH	Aircraft cable with hook	ZACF120	Aircraft cable with feed, 120"	CMRB-6	360° motion sensor <sup>6</sup>
				SFR7KIT	360° motion sensor <sup>6</sup>

### Notes

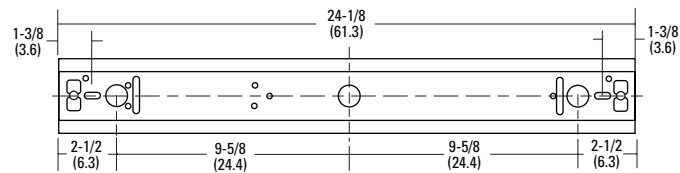
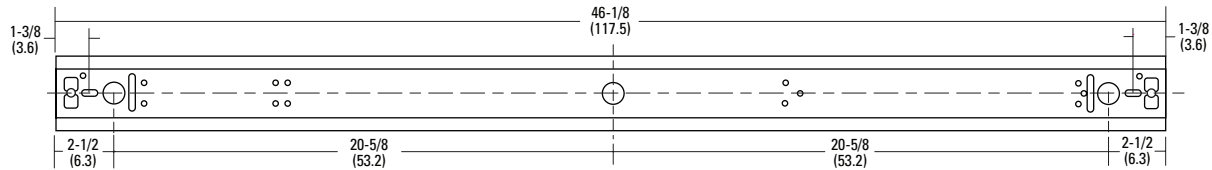
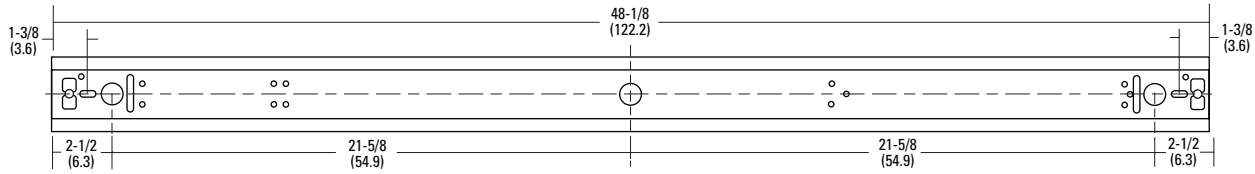
- Available with 46" and 48" only.
- Available with 24" only.
- Clear lens yields an additional 10% light.
- Specify voltage; 120 or 277.
- Output is 1400 lumens.
- Field installed only.
- Consult the PSG for desired configurations.

# ZL2 Lensed LED striplight

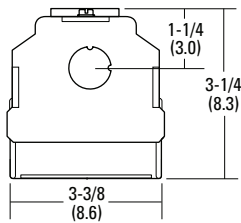
## DIMENSIONS

All dimensions are shown in inches (centimeters) unless otherwise noted.

Specifications subject to change without notice.



KO SIZE = 7/8 (22) Dia  
SLOT SIZE = 1/2 (12.7) X 1/8 (4.0)



## PHOTOMETRICS

Please see [www.lithonia.com](http://www.lithonia.com).