

FEATURES & SPECIFICATIONS

INTENDED USE —The T Series LED combines digital lighting and control technologies with a high-performance optical system to deliver general ambient lighting for many applications such as schools, offices and hospitals.

High-efficacy light engine delivers long life and excellent color, ensuring a superior quality lighting installation that is highly efficient and sustainable. **Certain airborne contaminants can diminish integrity of acrylic.** [Click here for Acrylic Environmental Compatibility table for suitable uses.](#)

CONSTRUCTION — Housing formed from cold-rolled steel. Housing is painted after fabrication for superior finish.

Smooth hemmed sides and smooth inward-formed end flanges, for easy handling.

Standard extruded aluminum door frame has superior structural integrity with premium appearance and mitered corners. Door frame is painted after fabrication, standard. Powder-painted rotary cam latches provide easy, secure door closure. Integral T-bar clips are standard. Acrylic shielding material is 100% UV stabilized.

OPTICS — Standard pattern #19 lens, 0.156" thick with highly transmissive overlay, is standard for superior brightness control. Overlay is 0.040" thick. Other lenses are available.

ELECTRICAL — Long-life LEDs, coupled with high-efficiency drivers, provide superior level and quality of illumination for extended service life. 90% LED lumen maintenance at 60,000 hours (L90/60,000).

eldoLED driver options deliver choice of dimming range, and choices for control, while assuring flicker-free, low-current inrush, 89% efficiency and low EMI. Optional nLight™ embedded controls continuously monitor system performance, allow for constant lumen management/compensation function, facilitate simple "plug-and-play" network and controls upgrading via Cat-5 cable.

Driver disconnect is provided where required to comply with U.S. and Canadian codes.

INSTALLATION — Drivers and internal components are accessible from floor. LED boards include plug-in connectors for easy replacement or servicing. Suitable for direct insulation contact. Suitable for damp location.

LISTINGS — CSA certified to U.S. and Canadian standards. IC rated.

DesignLights Consortium® (DLC) qualified product. Not all versions of this product may be DLC qualified. Please check the DLC Qualified Products List at www.designlights.org/QPL to confirm which versions are qualified.

WARRANTY — 5-year limited warranty. Complete warranty terms located at www.acuitybrands.com/CustomerResources/Terms_and_conditions.aspx

Note: Actual performance may differ as a result of end-user environment and application. All values are design or typical values, measured under laboratory conditions at 25 °C. Specifications subject to change without notice.

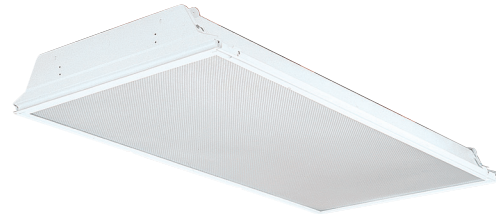
| |
|----------------|
| Catalog Number |
| Notes |
| Type |

GET A QUOTE >

T SERIES LED

2TL

2' x 4' LED



GET A QUOTE >

ORDERING INFORMATION

Lead times will vary depending on options selected. Consult with your sales representative.

Example: 2TL4 40L RW A19 EZ1 LP835 N80

| 2TL4 | | Lumens ¹ | | Door | | Lens | | Voltage | |
|------|------------------|---------------------|-------------|------|---------------------------|------|-----------------------------------|---------|-------------------|
| 2TL4 | Recessed LED 2x4 | 30L | 3000 lumens | FW | Flush aluminum, white | A12 | #12 pattern acrylic | (blank) | MVOLT (120-277V) |
| | | 40L | 4000 lumens | RW | Regressed aluminum, white | A19 | #19 pattern acrylic, 0.156" thick | 347 | 347V ² |
| | | 48L | 4800 lumens | | | MWS | Matte white .040" thick | | |
| | | 60L | 6000 lumens | | | MPL | Micro prism | | |
| | | 72L | 7200 lumens | | | SWL | Satin white | | |

| Driver | | Color temperature | | Control | | Options | |
|--------|--|-------------------|--------|---------|---|---------|---------------------------------|
| EZ1 | eldoLED dims to 1% (0-10 volt dimming) | LP830 | 3000 K | (blank) | No controls | EL7L | 700 nominal lumen battery pack |
| EZB | eldoLED dims to dark (0-10 volt dimming) | LP835 | 3500 K | N80 | nLight with 80% (L80) lumen management | EL14L | 1400 nominal lumen battery pack |
| EDB | eldoLED DALI ³ | LP840 | 4000 K | N80EMG | nLight with 80% (L80) lumen management for use with generator supply EM power | CP | Chicago plenum |
| EXB | eldoLED DMX/RDM ³ | LP850 | 5000 K | N100 | nLight without lumen management | | |
| EXA1 | Dims to 1%, XPoint wireless enabled ^{3,4} | | | N100EMG | nLight without lumen management for use with generator supply EM power | | |
| EXAB | Dims to dark, XPoint wireless enabled ^{3,4} | | | | | | |
| SLD | Step-level dimming ³ | | | | | | |

| Accessories: Order as separate catalog number. | |
|--|--|
| DGA24 | Drywall grid adapter for 2x4 recessed fixture. |

Notes

- 1 Approximate lumen output.
- 2 Not available with EL7L or EL14L battery packs or SLD driver.
- 3 Not available with N80, N80EMG, N100, or N100EMG.
- 4 Gateway not included. Requires on-site commissioning. Visit www.lightingcontrols.com/XPointWireless for more information.

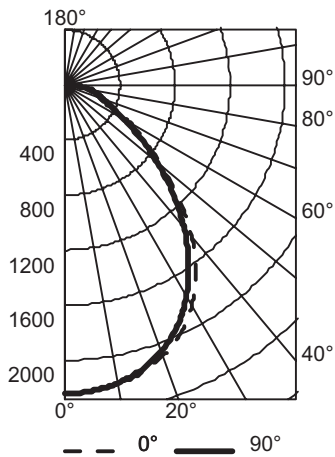
2TL 2X4 Recessed LED Lighting

| Performance Data | | | | |
|------------------|---------|---------|-------------|-------|
| Lumen | Package | Lumens | Input Watts | LPW |
| 30L | LP830 | 3,010.9 | 25 | 120.4 |
| 30L | LP835 | 3,075.5 | 25 | 123.0 |
| 30L | LP840 | 3,097.0 | 25 | 123.9 |
| 30L | LP850 | 3,204.7 | 25 | 128.2 |
| 40L | LP830 | 3,835.1 | 32 | 119.8 |
| 40L | LP835 | 3,918.2 | 32 | 122.4 |
| 40L | LP840 | 3,945.8 | 32 | 123.3 |
| 40L | LP850 | 4,084.2 | 32 | 127.6 |
| 48L | LP830 | 4,730.1 | 40 | 118.3 |
| 48L | LP835 | 4,831.6 | 40 | 120.8 |
| 48L | LP840 | 4,865.4 | 40 | 121.6 |
| 48L | LP850 | 5,034.6 | 40 | 125.9 |
| 60L | LP830 | 5,431.3 | 47 | 115.6 |
| 60L | LP835 | 5,548.2 | 47 | 118.0 |
| 60L | LP840 | 5,588.2 | 47 | 118.9 |
| 60L | LP850 | 5,785.0 | 47 | 123.1 |
| 72L | LP830 | 7,513.4 | 67 | 112.1 |
| 72L | LP835 | 7,673.3 | 67 | 114.5 |
| 72L | LP840 | 7,728.7 | 67 | 115.4 |
| 72L | LP850 | 7,999.3 | 67 | 119.4 |

Performance based on standard #12 pattern acrylic lens.

PHOTOMETRICS

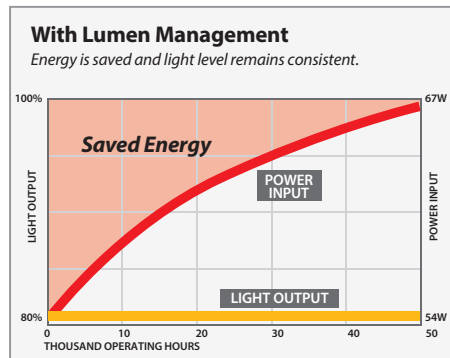
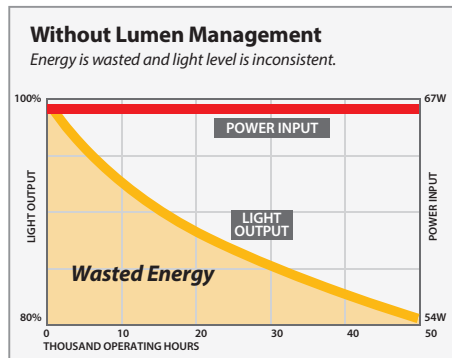
2TL4 48L FW A12 EZ1 LP840, 4865.4 delivered lumens, test no. LTL26934P10, tested in accordance to IESNA LM-79.



| CP Summary | | | | Coefficients of Utilization | | | | | | | | | | Zonal Lumen Summary | | | |
|------------|------|------|-----|-----------------------------|-----|-----|-----|-----|-----|-----|------|-----|--------|---------------------|-----------|-------|-------|
| | | 0° | 90° | pf | 80% | | 20% | | 50% | | Zone | | Lumens | % Lamp | % Fixture | | |
| 0° | 90° | 0° | 90° | pc | 70% | 50% | 30% | 10% | 70% | 50% | 30% | 10% | | | | | |
| 0° | 2239 | 2239 | | 0 | 119 | 119 | 119 | 116 | 116 | 116 | 111 | 111 | 111 | 0° - 30° | 1713 | 35.2 | 35.2 |
| 5° | 2234 | 2231 | | 1 | 110 | 106 | 102 | 103 | 100 | 97 | 99 | 96 | 94 | 0° - 40° | 2710 | 55.7 | 55.7 |
| 15° | 2163 | 2144 | | 2 | 101 | 94 | 88 | 92 | 86 | 81 | 88 | 84 | 80 | 0° - 60° | 4192 | 86.2 | 86.2 |
| 25° | 1990 | 1933 | | 3 | 93 | 84 | 76 | 82 | 75 | 70 | 79 | 73 | 69 | 0° - 90° | 4865 | 100.0 | 100.0 |
| 35° | 1661 | 1569 | | 4 | 86 | 75 | 67 | 74 | 66 | 61 | 71 | 65 | 60 | 90° - 120° | 0 | 0.0 | 0.0 |
| 45° | 1174 | 1109 | | 5 | 80 | 68 | 60 | 67 | 59 | 53 | 65 | 58 | 53 | 90° - 130° | 0 | 0.0 | 0.0 |
| 55° | 717 | 668 | | 6 | 74 | 62 | 53 | 61 | 53 | 47 | 59 | 52 | 47 | 90° - 150° | 0 | 0.0 | 0.0 |
| 65° | 403 | 370 | | 7 | 69 | 56 | 48 | 56 | 48 | 42 | 54 | 47 | 42 | 90° - 180° | 0 | 0.0 | 0.0 |
| 75° | 228 | 240 | | 8 | 64 | 52 | 44 | 51 | 43 | 38 | 50 | 43 | 38 | 0° - 180° | 4865 | 100.0 | 100.0 |
| 85° | 97 | 108 | | 9 | 60 | 48 | 40 | 47 | 40 | 35 | 46 | 39 | 34 | | | | |
| 90° | 0 | 0 | | 10 | 57 | 44 | 37 | 44 | 37 | 32 | 43 | 36 | 32 | | | | |

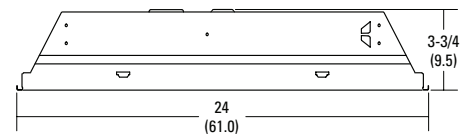
Constant Lumen Management

Enabled by the embedded nLight control, the T Series LED actively tracks its run-time and manages its light source such that constant lumen output is maintained over the system life. Referred to as lumen management, this feature eliminates the energy waste created by the traditional practice of over-lighting.



DIMENSIONS

All dimensions are inches (centimeters) unless otherwise noted.



Specifications

- Length: 48 (122.0)
- Width: 24 (61.0)
- Depth: 3-3/4 (9.5)